





LULU Concealed two-way diverter - Chrome

LULU

36 200 710



- rotary diverter
- rosette 60 x 78 mm
- with shut-off function

	Chrome	36 200 710-00 0010
	Brushed Platinum	36 200 710-06 0010

Required miscellaneous



- | | |
|-------------------------------------|---------------|
| Concealed two-way diverter - | 35 202 970-90 |
| •max. recess depth 155 mm | 0010 |
| •min. recess depth 85 mm | |

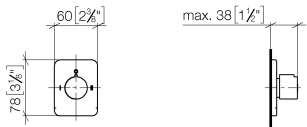


LULU Concealed two-way diverter - Chrome

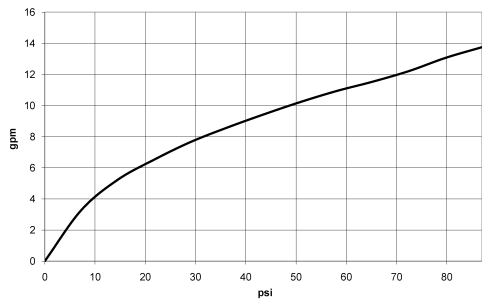
LULU

36 200 710

mm [inches]



Flow rate chart



Codes & Standards

ASME A112.18.1	California Energy Commission (CEC)	cUPC
----------------	------------------------------------	------



LULU Concealed two-way diverter - Chrome

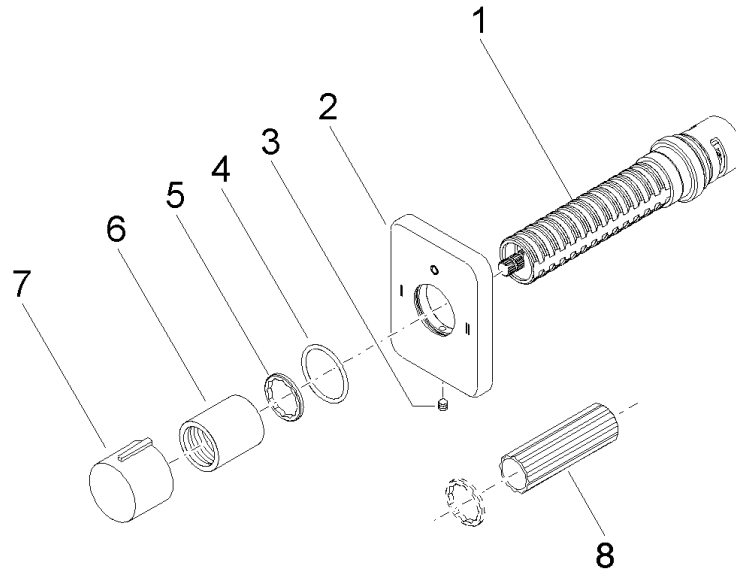
LULU

36 200 710

Certificates

IAPMO_4976

Product version from 4/1/2022





LULU Concealed two-way diverter - Chrome

LULU

36 200 710

Spare parts list

Product version from 4/1/2022

No.	Item Number	Name	Quantity used	Delivery time
	90 90 03 306 10 90	diverter	8	2