

Concealed two-way diverter - Brushed Platinum

CL.1

36 200 740



- rotary diverter
- without rosette
- handle Ø 60mm
- with shut-off function

Fits: CL.1, META, CYO

| | | |
|--|-------------------------------------|--------------------|
|  | Brushed Platinum | 36 200 740-06 0010 |
|  | Chrome | 36 200 740-00 0010 |
|  | Dark Chrome | 36 200 740-19 0010 |
|  | Light Gold | 36 200 740-26 0010 |
|  | Brushed Light Gold | 36 200 740-27 0010 |
|  | Brushed Durabronze (23kt Gold) | 36 200 740-28 0010 |
|  | Matte Black | 36 200 740-33 0010 |
|  | Brushed Bronze | 36 200 740-42 0010 |
|  | Brushed Champagne (22kt Gold) | 36 200 740-46 0010 |
|  | Champagne (22kt Gold) | 36 200 740-47 0010 |
|  | Brushed Dark Platinum | 36 200 740-99 0010 |

Required miscellaneous



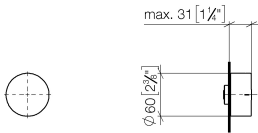
- | | |
|-------------------------------------|---------------|
| Concealed two-way diverter - | 35 202 970-90 |
| •max. recess depth 160 mm | 0010 |
| •min. recess depth 85 mm | |

Concealed two-way diverter - Brushed Platinum

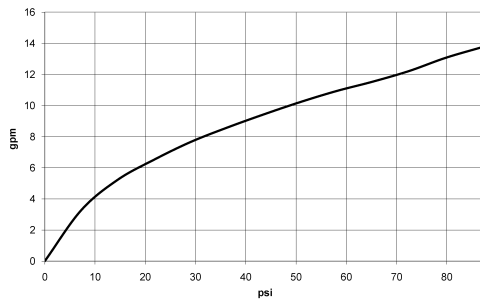
CL.1

36 200 740

mm [inches]



Flow rate chart



Codes & Standards

ASME A112.18.1

California Energy
Commission
(CEC)

cUPC



Concealed two-way diverter - Brushed Platinum

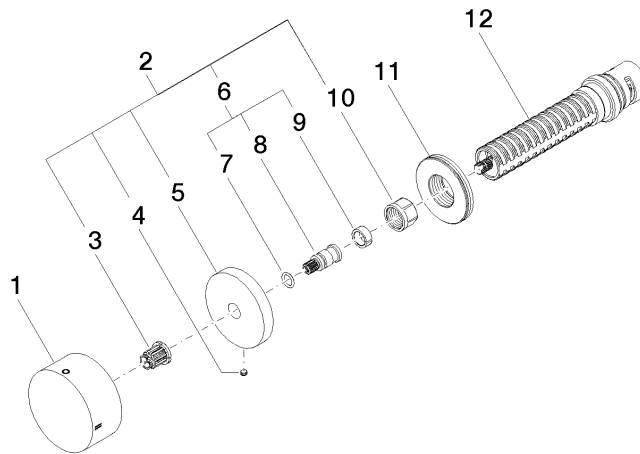
CL.1

36 200 740

Certificates

IAPMO_4976

Product version from 4/1/2022





Concealed two-way diverter - Brushed Platinum

CL.1

36 200 740

Spare parts list

Product version from 4/1/2022

| No. | Item Number | Name | Quantity used | Delivery time |
|-----|-----------------|--------|---------------|---------------|
| | 09 20 74 042-06 | handle | 12 | 60 |