

## Concealed two-way diverter - Matte Black

CL.1

36 200 740



- rotary diverter
- without rosette
- handle Ø 60mm
- with shut-off function

Fits: CL.1, META, CYO

	Matte Black	36 200 740-33 0010
	Chrome	36 200 740-00 0010
	Brushed Platinum	36 200 740-06 0010
	Dark Chrome	36 200 740-19 0010
	Light Gold	36 200 740-26 0010
	Brushed Light Gold	36 200 740-27 0010
	Brushed Durabronze (23kt Gold)	36 200 740-28 0010
	Brushed Bronze	36 200 740-42 0010
	Brushed Champagne (22kt Gold)	36 200 740-46 0010
	Champagne (22kt Gold)	36 200 740-47 0010
	Brushed Dark Platinum	36 200 740-99 0010

### Required miscellaneous



- Concealed two-way diverter -** 35 202 970-90
- max. recess depth 160 mm 0010
  - min. recess depth 85 mm

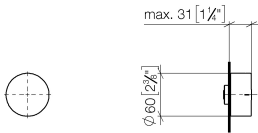


Concealed two-way diverter - Matte Black

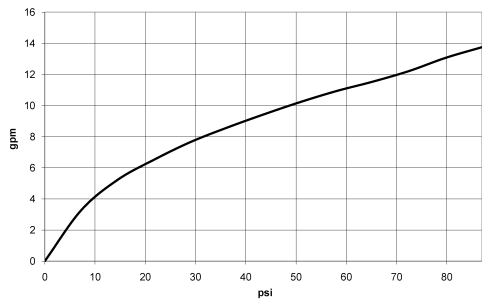
CL.1

36 200 740

mm [inches]



Flow rate chart



Codes & Standards

ASME A112.18.1

California Energy  
Commission  
(CEC)

cUPC



## Concealed two-way diverter - Matte Black

---

CL.1

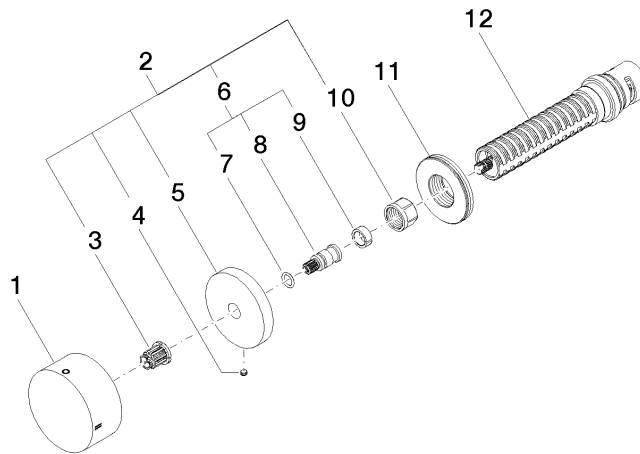
36 200 740

### Certificates

---

IAPMO\_4976

**Product version from 4/1/2022**





## Concealed two-way diverter - Matte Black

CL.1

36 200 740

### Spare parts list

#### Product version from 4/1/2022

No.	Item Number	Name	Quantity used	Delivery time
	09 20 74 042-33	handle	12	60