

## TARA Concealed two-way diverter - Matte Black

TARA

36 200 892



- rotary diverter
- rosette 60 mm
- with shut-off function

	Matte Black	36 200 892-33 0010
	Chrome	36 200 892-00 0010
	Brushed Platinum	36 200 892-06 0010
	Platinum	36 200 892-08 0010
	Brushed Durabronze (23kt Gold)	36 200 892-28 0010
	Brushed Bronze	36 200 892-42 0010
	Brushed Champagne (22kt Gold)	36 200 892-46 0010
	Champagne (22kt Gold)	36 200 892-47 0010
	Brushed Chrome	36 200 892-93 0010
	Brushed Dark Platinum	36 200 892-99 0010

### Required miscellaneous



- Concealed two-way diverter -** 35 202 970-90
- max. recess depth 160 mm 0010
  - min. recess depth 85 mm

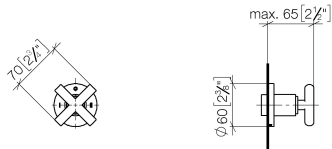


TARA Concealed two-way diverter - Matte Black

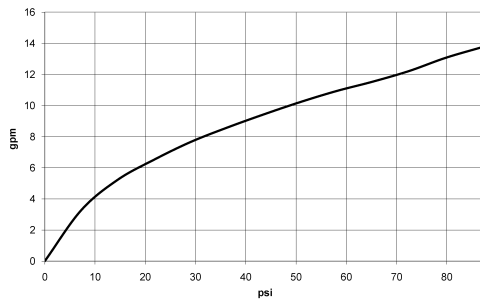
TARA

36 200 892

mm [inches]



Flow rate chart



Codes & Standards

ASME A112.18.1	California Energy Commission (CEC)	cUPC
----------------	------------------------------------	------



## TARA Concealed two-way diverter - Matte Black

---

TARA

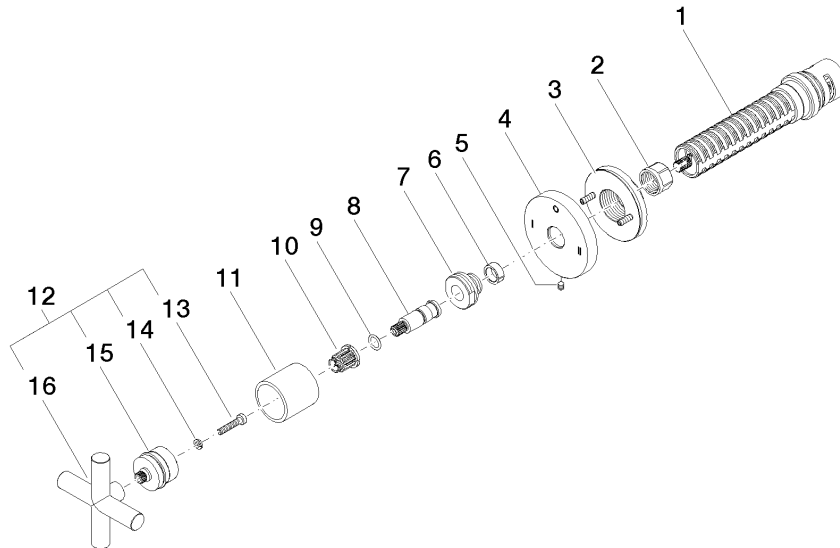
36 200 892

### Certificates

---

IAPMO\_4976

36 200 892

**Product version from 4/1/2022**



## TARA Concealed two-way diverter - Matte Black

TARA

36 200 892

### Spare parts list

#### Product version from 4/1/2022

No.	Item Number	Name	Quantity used	Delivery time
	90 90 03 306 10 90	diverter	16	2