

## TARA Concealed two-way diverter - Brushed Bronze

TARA

36 200 892

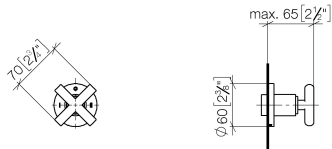


- rotary diverter
- rosette 60 mm
- with shut-off function

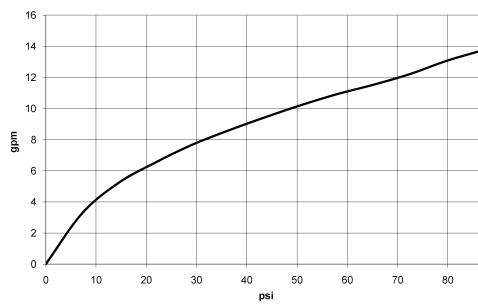
	Brushed Bronze	36 200 892-42 0010
	Chrome	36 200 892-00 0010
	Brushed Platinum	36 200 892-06 0010
	Platinum	36 200 892-08 0010
	Brushed Durabronze (23kt Gold)	36 200 892-28 0010
	Matte Black	36 200 892-33 0010
	Brushed Champagne (22kt Gold)	36 200 892-46 0010
	Champagne (22kt Gold)	36 200 892-47 0010
	Brushed Chrome	36 200 892-93 0010
	Brushed Dark Platinum	36 200 892-99 0010

36 200 892

mm [inches]



## Flow rate chart

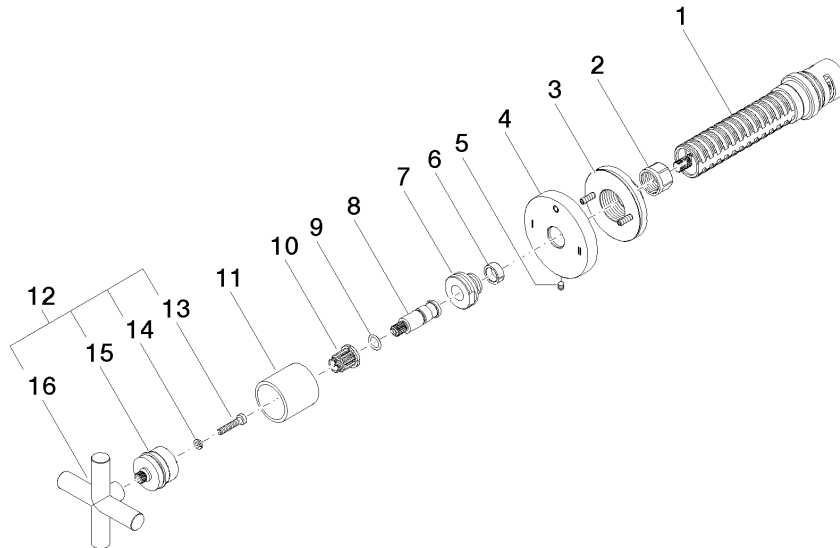


## Codes & Standards

California Energy  
Commission  
(CEC)

**Product version from 4/1/2022**

Parts for other  
finishes can be found  
here: [Chrome](#)





## TARA Concealed two-way diverter - Brushed Bronze

TARA

36 200 892

### Spare parts list

#### Product version from 4/1/2022

No.	Item Number	Name	Quantity used	Delivery time
	90 90 03 306 10 90	diverter	16	2