

TARA Concealed two-way diverter - Brushed Chrome

TARA

36 200 892



- rotary diverter
- rosette 60 mm
- with shut-off function

	Brushed Chrome	36 200 892-93 0010
	Chrome	36 200 892-00 0010
	Brushed Platinum	36 200 892-06 0010
	Platinum	36 200 892-08 0010
	Brushed Durabronze (23kt Gold)	36 200 892-28 0010
	Matte Black	36 200 892-33 0010
	Brushed Bronze	36 200 892-42 0010
	Brushed Champagne (22kt Gold)	36 200 892-46 0010
	Champagne (22kt Gold)	36 200 892-47 0010
	Brushed Dark Platinum	36 200 892-99 0010

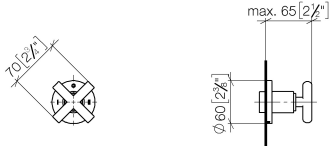
Required miscellaneous



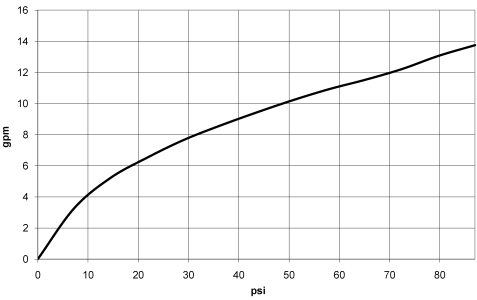
Concealed two-way diverter -	35 202 970-90
• max. recess depth 160 mm	0010
• min. recess depth 85 mm	

36 200 892

mm [inches]



Flow rate chart



Codes & Standards

ASME A112.18.1	California Energy Commission (CEC)	cUPC
----------------	------------------------------------	------



TARA Concealed two-way diverter - Brushed Chrome

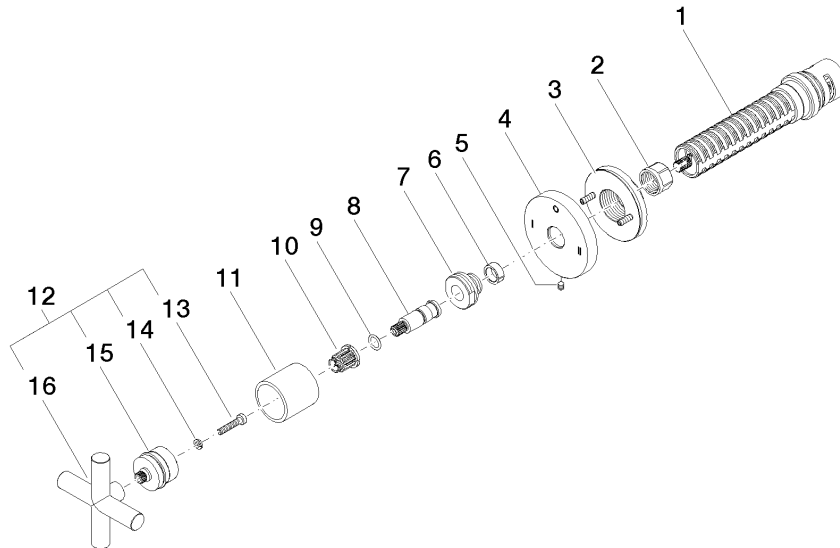
TARA

36 200 892

Certificates

IAPMO_4976

36 200 892

Product version from 4/1/2022



TARA Concealed two-way diverter - Brushed Chrome

TARA

36 200 892

Spare parts list

Product version from 4/1/2022

No.	Item Number	Name	Quantity used	Delivery time
	90 90 03 306 10 90	diverter	16	2