




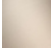

SYMETRICS Concealed two-way diverter - Chrome

IMO


36 200 985



- rotary diverter
- rosette 60 x 60 mm
- with shut-off function

	Chrome	36 200 985-00 0010
	Brushed Platinum	36 200 985-06 0010
	Brushed Durabronze (23kt Gold)	36 200 985-28 0010
	Brushed Champagne (22kt Gold)	36 200 985-46 0010
	Champagne (22kt Gold)	36 200 985-47 0010
	Brushed Dark Platinum	36 200 985-99 0010

Required miscellaneous

	<div>Concealed two-way diverter -</div> <div> <div>•max. recess depth 160 mm</div> <div>•min. recess depth 85 mm</div> </div>	<div>35 202 970-90</div> <div>0010</div>
---	---	--

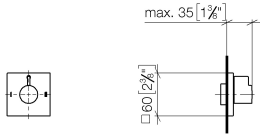


SYMETRICS Concealed two-way diverter - Chrome

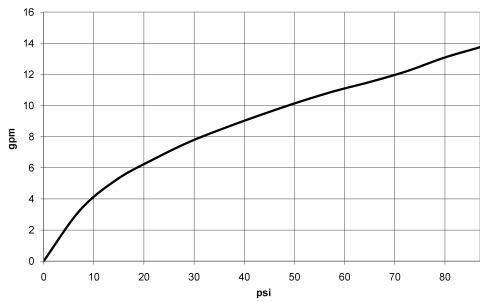
IMO

36 200 985

mm [inches]



Flow rate chart



Codes & Standards

California Energy  
Commission  
(CEC)



## SYMETRICS Concealed two-way diverter - Chrome

---

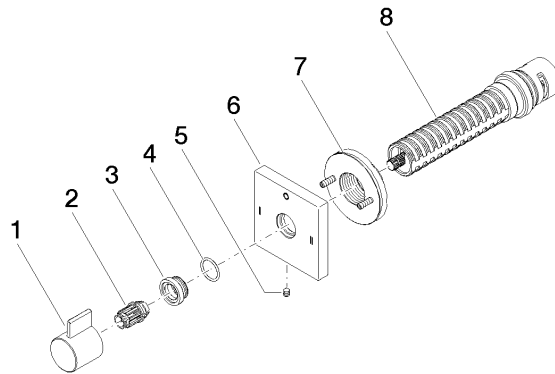
IMO

36 200 985

### Certificates

---

IAPMO\_4976 (7).



## Spare parts list

No.	Item Number	Name	Quantity used	Delivery time
1	09 20 98 002-00	handle	1	10
2	09 12 12 005 90	fixing cap	1	2
3	09 12 12 043-00	base	1	10
4	09 14 10 017 90	seal	1	2
5	09 31 11 294 90	pin	1	2
6	09 27 98 039-00	rosette	1	60
7	90 21 02 181 00 90	disc	1	2
8	90 90 03 306 10 90	diverter	1	2