





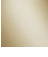

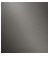
SYMETRICS Concealed two-way diverter - Brushed Platinum

IMO

36 200 985



- rotary diverter
- rosette 60 x 60 mm
- with shut-off function

	Brushed Platinum	36 200 985-06 0010
	Chrome	36 200 985-00 0010
	Brushed Light Gold	36 200 985-27 0010
	Brushed Durabronze (23kt Gold)	36 200 985-28 0010
	Brushed Champagne (22kt Gold)	36 200 985-46 0010
	Champagne (22kt Gold)	36 200 985-47 0010
	Brushed Dark Platinum	36 200 985-99 0010

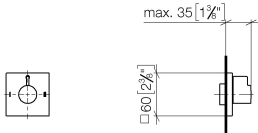
Required miscellaneous



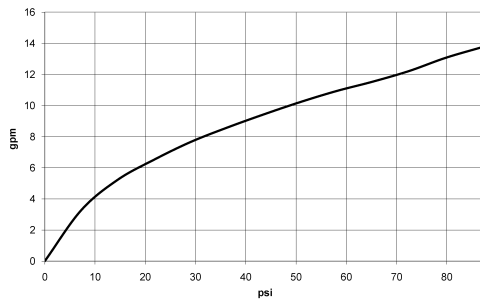
- |                                     |               |
|-------------------------------------|---------------|
| <b>Concealed two-way diverter -</b> | 35 202 970-90 |
| •max. recess depth 160 mm           | 0010          |
| •min. recess depth 85 mm            |               |

36 200 985

mm [inches]



Flow rate chart



Codes & Standards

ASME A112.18.1

California Energy  
Commission  
(CEC)

cUPC



## SYMETRICS Concealed two-way diverter - Brushed Platinum

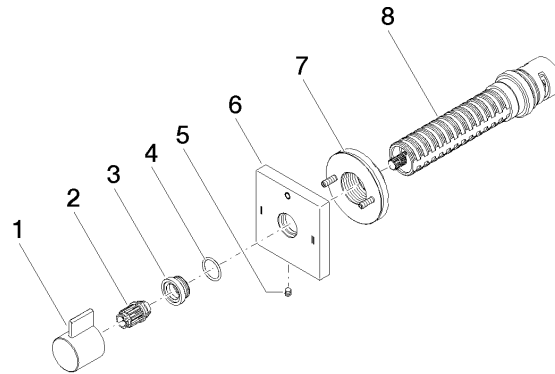
IMO

36 200 985

### Certificates

IAPMO\_4976

**Product version from 4/1/2022**





## SYMETRICS Concealed two-way diverter - Brushed Platinum

IMO

36 200 985

### Spare parts list

#### Product version from 4/1/2022

No.	Item Number	Name	Quantity used	Delivery time
	09 20 98 002-06	handle	8	10