






## CL.1 Concealed two-way diverter - Brushed Dark Platinum

CL.1

36 201 705



- with WAVES structure
- rotary diverter
- rosette 60 x 60 mm
- with shut-off function

	Brushed Dark Platinum	36 201 705-99 0010
	Chrome	36 201 705-00 0010
	Brushed Platinum	36 201 705-06 0010
	Dark Chrome	36 201 705-19 0010
	Brushed Champagne (22kt Gold)	36 201 705-46 0010
	Champagne (22kt Gold)	36 201 705-47 0010

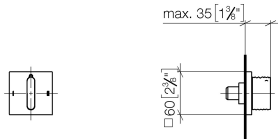
### Required miscellaneous



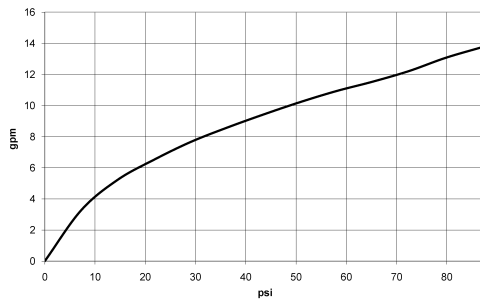
- Concealed two-way diverter -** 35 202 970-90
- max. recess depth 160 mm 0010
  - min. recess depth 115 mm

36 201 705

mm [inches]



Flow rate chart



Codes & Standards

ASME A112.18.1

California Energy  
Commission  
(CEC)

cUPC



## CL.1 Concealed two-way diverter - Brushed Dark Platinum

---

CL.1

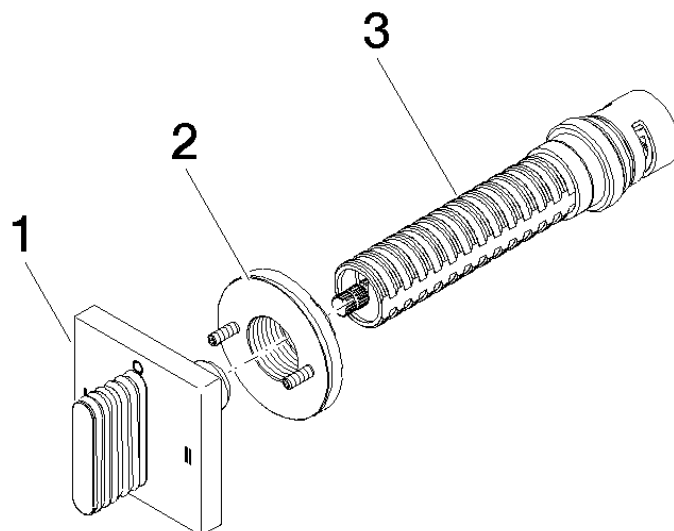
36 201 705

### Certificates

---

IAPMO\_4976

**Product version from 4/1/2022**





## CL.1 Concealed two-way diverter - Brushed Dark Platinum

CL.1

36 201 705

### Spare parts list

#### Product version from 4/1/2022

No.	Item Number	Name	Quantity used	Delivery time
	90 20 70 055 09-99	handle	3	30