

## xTOOL Concealed thermostat without volume control - Chrome

MEM

36 416 780



- cover plate 120 x 120 mm
- temperature control handle with safety limit stop at 38°C

**Note: Important! The minimum recess depths make it necessary to have a wall of 2 x 6 crosspieces.**

Note: Important! The minimum recess depths make it necessary to have a wall of 2 x 6 crosspieces.

Fits: MEM, CL.1

	Chrome	36 416 780-00
	Brushed Platinum	36 416 780-06
	Platinum	36 416 780-08
	Dark Chrome	36 416 780-19
	Brushed Durabronze (23kt Gold)	36 416 780-28
	Matte Black	36 416 780-33
	Brushed Champagne (22kt Gold)	36 416 780-46
	Champagne (22kt Gold)	36 416 780-47
	Cyprus	36 416 780-49
	Brushed Chrome	36 416 780-93
	Brushed Dark Platinum	36 416 780-99

### Required miscellaneous

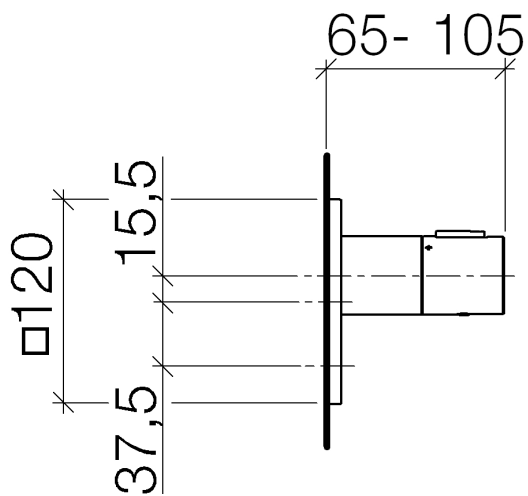


**xTOOL Concealed thermostat module -**

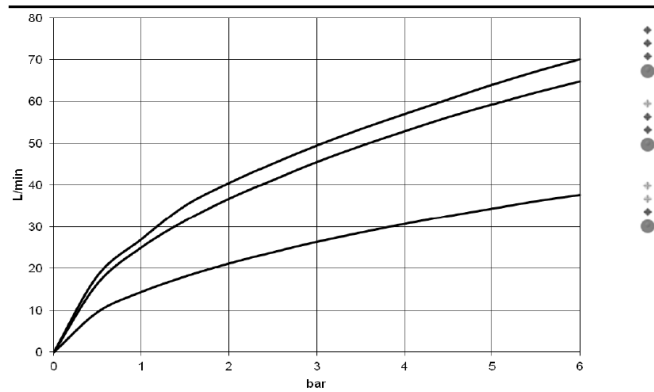
35 517 970-90  
0010

- min. recess depth 80 mm
- max. recess depth 156 mm

36 416 780



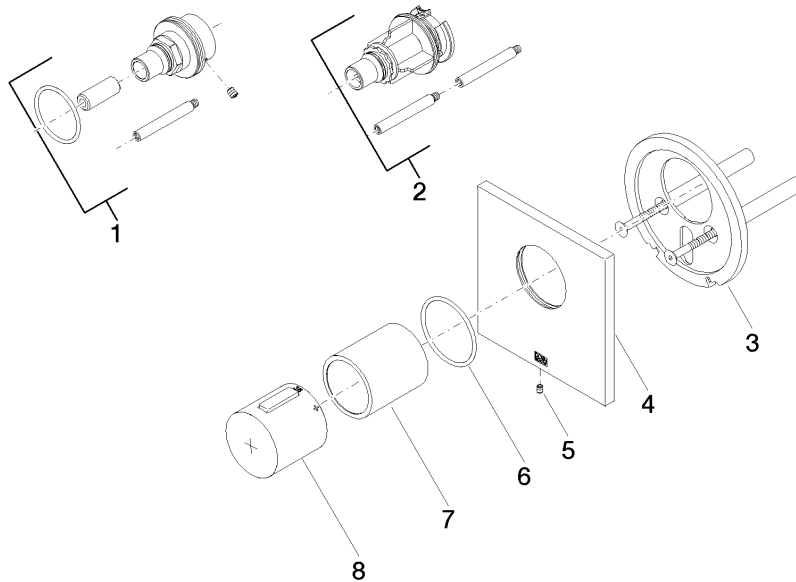
Flow rate chart



## Certificates

IAPMO\_4976 (5).

36 416 780



## Spare parts list

No.	Item Number	Name	Quantity used	Delivery time
1	12 177 970 90	Extension 28 mm -	1	2
2	12 178 970 90	Extension 46 mm -	1	2
3	90 11 01 196 00 90	base	1	2
4	90 11 02 533 00-00	cover	1	10
5	09 31 11 044 90	pin	1	2
6	90 14 10 049 00 90	seal	1	2
7	90 21 02 112 00-00	sleeve	1	10
8	90 17 33 017 00-00	handle	1	10