

xTOOL Concealed thermostat without volume control - Brushed Dark Platinum

MEM

36 416 780



- cover plate 120 x 120 mm
- temperature control handle with safety limit stop at 38°C

Note: Important! The minimum recess depths make it necessary to have a wall of 2 x 6 crosspieces.

Note: Important! The minimum recess depths make it necessary to have a wall of 2 x 6 crosspieces.

Fits: MEM, CL.1

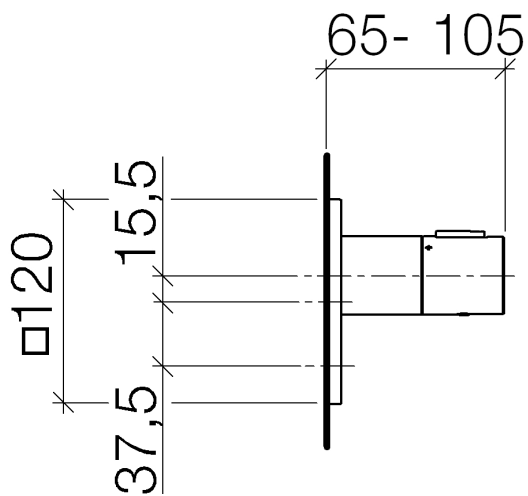
	Brushed Dark Platinum	36 416 780-99
	Chrome	36 416 780-00
	Brushed Platinum	36 416 780-06
	Platinum	36 416 780-08
	Dark Chrome	36 416 780-19
	Brushed Durabronze (23kt Gold)	36 416 780-28
	Matte Black	36 416 780-33
	Brushed Champagne (22kt Gold)	36 416 780-46
	Champagne (22kt Gold)	36 416 780-47
	Cyprus	36 416 780-49
	Brushed Chrome	36 416 780-93

Required miscellaneous

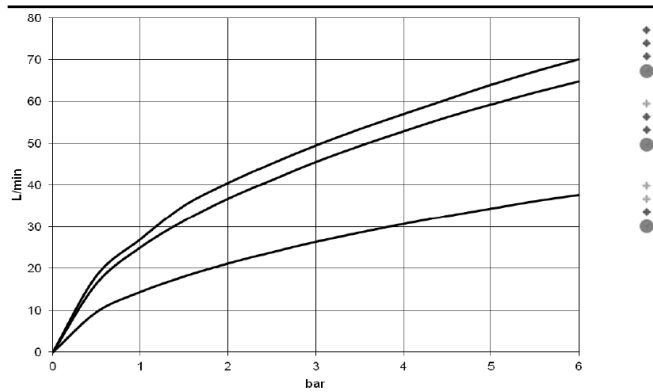


- xTOOL Concealed thermostat module -** 35 517 970-90 0010
- min. recess depth 80 mm
 - max. recess depth 156 mm

36 416 780



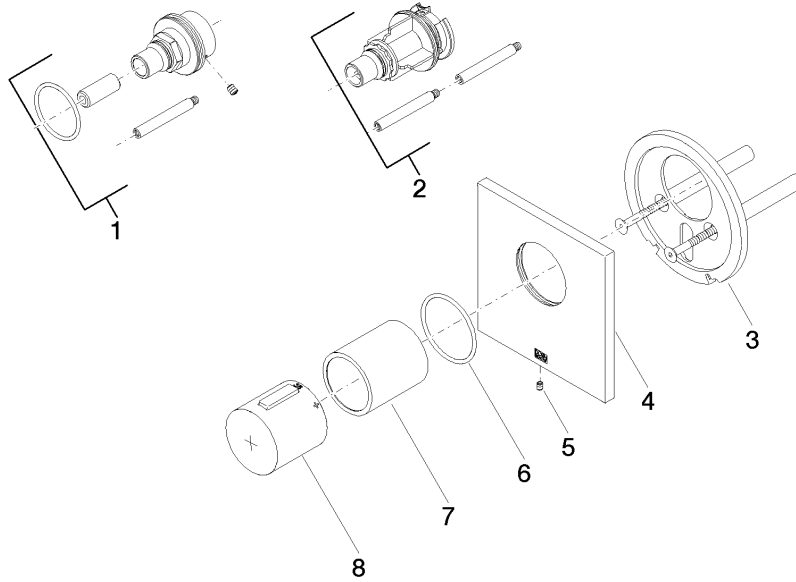
Flow rate chart



Certificates

IAPMO_4976 (4).

36 416 780



Spare parts list

No.	Item Number	Name	Quantity used	Delivery time
1	12 177 970 90	Extension 28 mm -	1	2
2	12 178 970 90	Extension 46 mm -	1	2
3	90 11 01 196 00 90	base	1	2
4	90 11 02 533 00-99	cover	1	30
5	09 31 11 044 90	pin	1	2
6	90 14 10 049 00 90	seal	1	2
7	90 21 02 112 00-99	sleeve	1	-
Spare part can no longer be ordered, please order the replacement item				
8	90 17 33 017 00-99	handle	1	30