

**Concealed thermostat with two function volume control - Brushed Platinum**

IMO

36 426 670



- rotary diverter with volume control and shut-off function
- cover plate 150 x 90 mm
- temperature control handle with safety limit stop at 38°C
- hot water temperature limiter, can be preset
- single flow function only

Fits: IMO, MEM, CL.1, CYO

|  |                               |                    |
|--|-------------------------------|--------------------|
|   | Brushed Platinum              | 36 426 670-06 0010 |
|   | Chrome                        | 36 426 670-00 0010 |
|   | Platinum                      | 36 426 670-08 0010 |
|   | Dark Chrome                   | 36 426 670-19 0010 |
|   | Brushed Durabrass (23kt Gold) | 36 426 670-28 0010 |
|   | Matte Black                   | 36 426 670-33 0010 |
|   | Brushed Champagne (22kt Gold) | 36 426 670-46 0010 |
|   | Champagne (22kt Gold)         | 36 426 670-47 0010 |
|   | Brushed Chrome                | 36 426 670-93 0010 |
|  | Brushed Dark Platinum         | 36 426 670-99 0010 |

**Required miscellaneous**



**Concealed thermostat for one- and two-way outlets -**  
 • max. recess depth 136 mm  
 • min. recess depth 80 mm

35 426 970-90 0010

**Recommended miscellaneous**



**xGRID Attachment set for integrating in the dry wall construction -**

12 340 970 90

**Required miscellaneous**

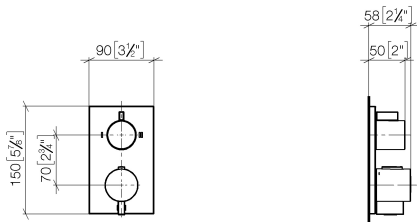


**xGRID Installation track 555 mm -**

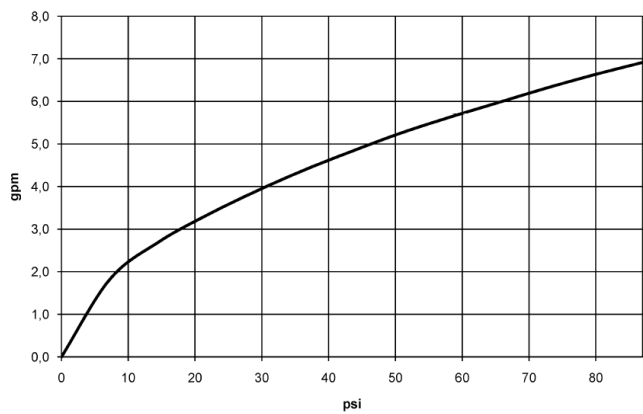
12 360 970 90

36 426 670

mm [inches]



Flow rate chart



Codes & Standards

ADA

ASME  
A112.18.1/CSA  
B125.1

California Energy  
Commission  
(CEC)



## Concealed thermostat with two function volume control - Brushed Platinum

---

IMO

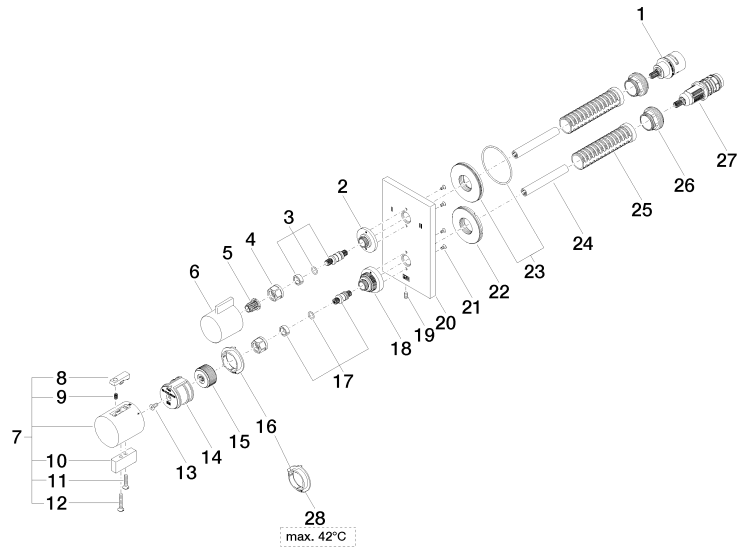
36 426 670

### Certificates

---

IAPMO\_4976 (3).

36 426 670





## Concealed thermostat with two function volume control - Brushed Platinum

IMO

36 426 670

### Spare parts list

| No. | Item Number        | Name       | Quantity used | Delivery time |
|-----|--------------------|------------|---------------|---------------|
| 1   | 90 90 03 163 00 90 | diverter   | 1             | 2             |
| 2   | 09 12 12 053-06    | base       | 1             | 10            |
| 3   | 04 29 06 111 01-00 | spindle    | 1             | 10            |
| 4   | 90 23 30 023 00 90 | nut        | 2             | 2             |
| 5   | 90 12 12 002 00 90 | fixing cap | 1             | 2             |
| 6   | 09 20 67 006-06    | handle     | 1             | 10            |
| 7   | 04 17 33 006 00-06 | handle     | 1             | 60            |
| 8   | 90 21 33 011 00-13 | handle     | 1             | 30            |
| 9   | 90 16 02 027 00 90 | spring     | 1             | 2             |
| 10  | 09 20 33 006-06    | handle     | 1             | 10            |
| 11  | 09 30 30 159-06    | screw      | 1             | 10            |
| 12  | 09 30 30 160-06    | screw      | 1             | 10            |
| 13  | 90 30 30 124 00 90 | screw      | 1             | 2             |
| 14  | 90 12 12 052 00 90 | base       | 1             | 2             |
| 15  | 09 12 12 054 90    | base       | 1             | 2             |
| 16  | 09 28 10 190 90    | regulator  | 1             | 2             |
| 17  | 04 29 06 024 01-00 | spindle    | 1             | 10            |
| 18  | 09 12 12 051-06    | base       | 1             | 10            |
| 19  | 09 31 11 134 90    | pin        | 1             | 2             |
| 20  | 09 11 02 263-06    | plate      | 1             | 10            |
| 21  | 09 30 30 157 90    | screw      | 4             | 2             |
| 22  | 09 30 01 296 90    | disc       | 1             | 2             |
| 23  | 90 30 01 190 00 90 | disc       | 1             | 2             |
| 24  | 90 23 01 124 00 90 | sleeve     | 2             | 2             |
| 25  | 90 18 40 077 01 90 | spindle    | 2             | 2             |
| 26  | 09 24 04 257 90    | nut        | 2             | 2             |
| 27  | 90 15 02 013 00 90 | cartridge  | 1             | 2             |
| 28  | 09 28 10 189 90    | regulator  | 1             | 2             |