

## Concealed thermostat with two function volume control - Dark Chrome

IMO

36 426 670



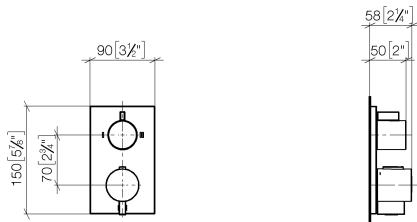
- rotary diverter with volume control and shut-off function
- cover plate 150 x 90 mm
- temperature control handle with safety limit stop at 38°C
- hot water temperature limiter, can be preset
- single flow function only

Fits: IMO, MEM, CL.1, CYO

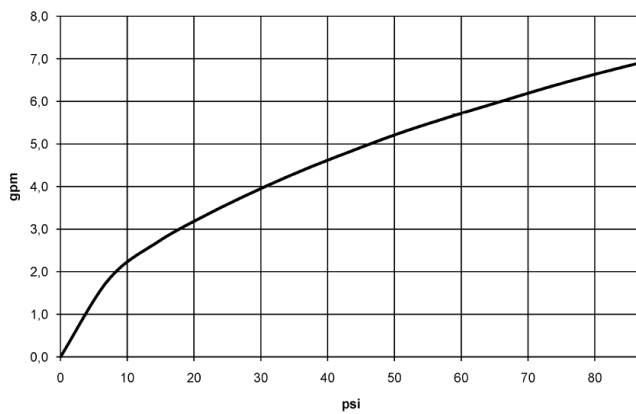
	Dark Chrome	36 426 670-19 0010
	Chrome	36 426 670-00 0010
	Brushed Platinum	36 426 670-06 0010
	Platinum	36 426 670-08 0010
	Brushed Light Gold	36 426 670-27 0010
	Brushed Durabronze (23kt Gold)	36 426 670-28 0010
	Matte Black	36 426 670-33 0010
	Brushed Champagne (22kt Gold)	36 426 670-46 0010
	Champagne (22kt Gold)	36 426 670-47 0010
	Brushed Chrome	36 426 670-93 0010
	Brushed Dark Platinum	36 426 670-99 0010

36 426 670

mm [inches]



### Flow rate chart



### Codes & Standards

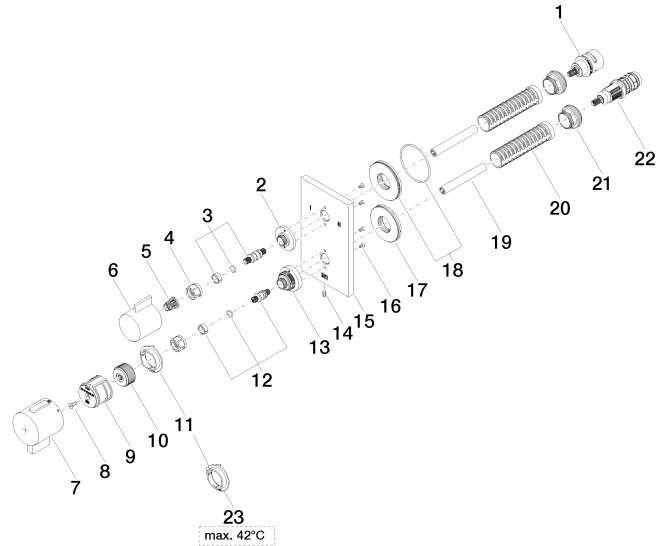
ADA

ASME  
A112.18.1/CSA  
B125.1

California Energy  
Commission  
(CEC)

36 426 670

Parts for other  
finishes can be found  
here: [Chrome](#)





## Concealed thermostat with two function volume control - Dark Chrome

IMO

36 426 670

### **Spare parts list**