

Concealed thermostat with two function volume control - Matte Black

IMO

36 426 670



- rotary diverter with volume control and shut-off function
- cover plate 150 x 90 mm
- temperature control handle with safety limit stop at 38°C
- hot water temperature limiter, can be preset
- single flow function only

Fits: IMO, MEM, CL.1, CYO

| | | |
|--|--------------------------------|--------------------|
|  | Matte Black | 36 426 670-33 0010 |
|  | Chrome | 36 426 670-00 0010 |
|  | Brushed Platinum | 36 426 670-06 0010 |
|  | Platinum | 36 426 670-08 0010 |
|  | Dark Chrome | 36 426 670-19 0010 |
|  | Brushed Light Gold | 36 426 670-27 0010 |
|  | Brushed Durabronze (23kt Gold) | 36 426 670-28 0010 |
|  | Brushed Champagne (22kt Gold) | 36 426 670-46 0010 |
|  | Champagne (22kt Gold) | 36 426 670-47 0010 |
|  | Brushed Chrome | 36 426 670-93 0010 |
|  | Brushed Dark Platinum | 36 426 670-99 0010 |

Required miscellaneous



| | |
|--|--------------------|
| Concealed thermostat for one- and two-way outlets - | 35 426 970-90 0010 |
| • max. recess depth 136 mm | |
| • min. recess depth 80 mm | |

Recommended miscellaneous



| | |
|--|---------------|
| xGRID Attachment set for integrating in the dry wall construction - | 12 340 970 90 |
|--|---------------|

Required miscellaneous



| | |
|--|---------------|
| xGRID Installation track 555 mm - | 12 360 970 90 |
|--|---------------|

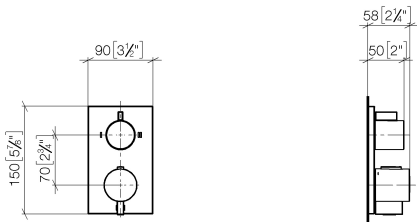


Concealed thermostat with two function volume control - Matte Black

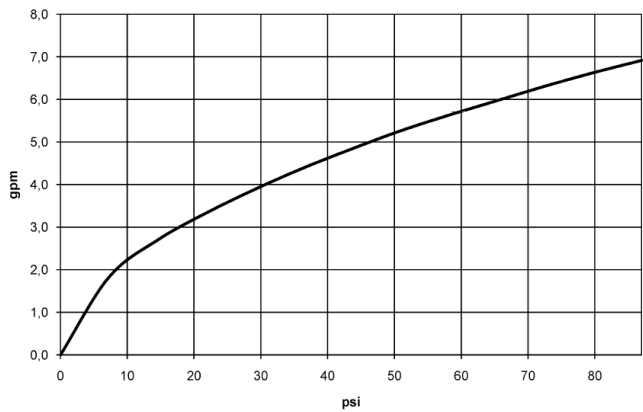
IMO

36 426 670

mm [inches]



Flow rate chart



Codes & Standards

| | | | |
|------|----------------|---------------------------------|--|
| ADA | ASME A112.18.1 | ASME A112.18.1/CSA B125.1 | California Energy Commission (CEC) |
| cUPC | | | |



Concealed thermostat with two function volume control - Matte Black

IMO

36 426 670

Certificates

IAPMO_4976

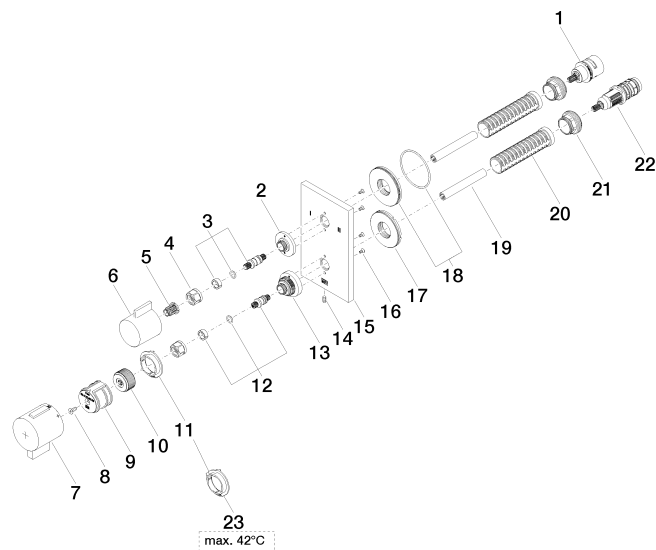
36 426 670

Product version up to 8/24/2020

Product version from 8/24/2020 to 2/1/2021

Product version from 2/1/2021 to 6/30/2022

Product version from 6/30/2022





Concealed thermostat with two function volume control - Matte Black

IMO

36 426 670

Spare parts list

Product version up to 8/24/2020

Product version from 8/24/2020 to 2/1/2021

Product version from 2/1/2021 to 6/30/2022

Product version from 6/30/2022

| No. | Item Number | Name | Quantity used | Delivery time |
|-----|--------------------|----------|---------------|---------------|
| | 90 90 03 163 00 90 | diverter | 30 | 2 |