

## Concealed thermostat with two function volume control - Brushed Chrome


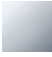

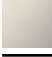



IMO

36 426 670



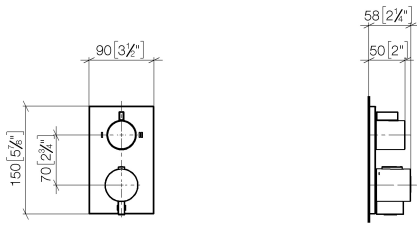
Fits: IMO, MEM, CL.1, CYO

- rotary diverter with volume control and shut-off function
- cover plate 150 x 90 mm
- temperature control handle with safety limit stop at 38°C
- hot water temperature limiter, can be preset
- single flow function only

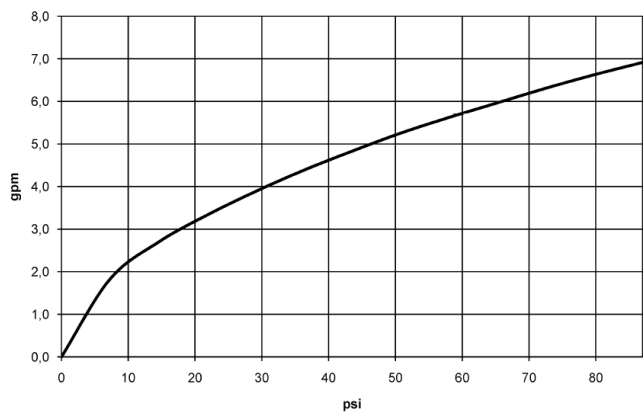
	Brushed Chrome	36 426 670-93 0010
	Chrome	36 426 670-00 0010
	Brushed Platinum	36 426 670-06 0010
	Platinum	36 426 670-08 0010
	Dark Chrome	36 426 670-19 0010
	Brushed Durabronze (23kt Gold)	36 426 670-28 0010
	Matte Black	36 426 670-33 0010
	Brushed Champagne (22kt Gold)	36 426 670-46 0010
	Champagne (22kt Gold)	36 426 670-47 0010
	Brushed Dark Platinum	36 426 670-99 0010

36 426 670

mm [inches]



Flow rate chart



Codes & Standards

ADA

ASME  
A112.18.1/CSA  
B125.1

California Energy  
Commission  
(CEC)



## Concealed thermostat with two function volume control - Brushed Chrome

---

IMO

36 426 670

### Certificates

---

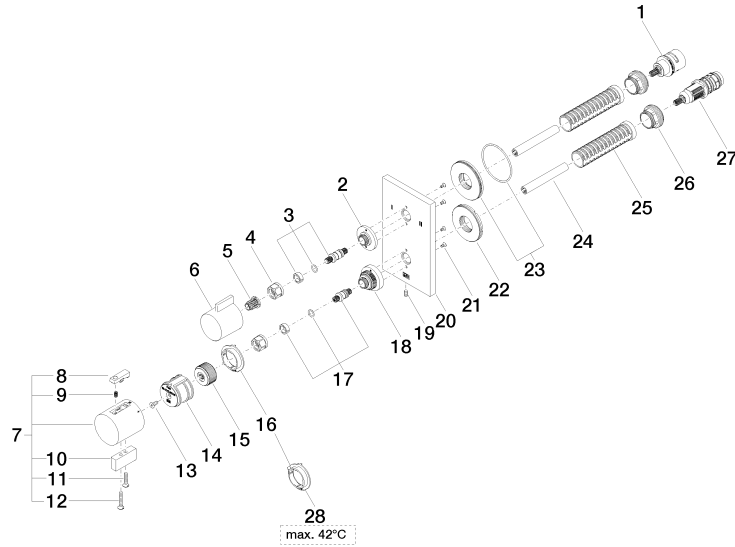
IAPMO\_4976 (2).

## Concealed thermostat with two function volume control - Brushed Chrome

IMO

36 426 670

Parts for other  
finishes can be found  
here: [Chrome](#)





## Concealed thermostat with two function volume control - Brushed Chrome

IMO

36 426 670

### Spare parts list

No.	Item Number	Name	Quantity used	Delivery time
1	90 90 03 163 00 90	diverter	1	2
2	09 12 12 053-93	base	1	20
3	04 29 06 111 01-00	spindle	1	10
4	90 23 30 023 00 90	nut	2	2
5	90 12 12 002 00 90	fixing cap	1	2
6	09 20 67 006-93	handle	1	20
7	04 17 33 006 00-93	handle	1	60
8	90 21 33 011 00-13	handle	1	2
9	90 16 02 027 00 90	spring	1	2
10	09 20 33 006-93	handle	1	20
11	09 30 30 159-93	screw	1	20
12	09 30 30 160-93	screw	1	20
13	90 30 30 124 00 90	screw	1	2
14	90 12 12 052 00 90	base	1	2
15	09 12 12 054 90	base	1	2
16	09 28 10 190 90	regulator	1	2
17	04 29 06 024 01-00	spindle	1	10
18	09 12 12 051-93	base	1	20
19	09 31 11 134 90	pin	1	2
20	09 11 02 263-93	plate	1	20
21	09 30 30 157 90	screw	4	2
22	09 30 01 296 90	disc	1	2
23	90 30 01 190 00 90	disc	1	2
24	90 23 01 124 00 90	sleeve	2	2
25	90 18 40 077 01 90	spindle	2	2
26	09 24 04 257 90	nut	2	2
27	90 15 02 013 00 90	cartridge	1	2
28	09 28 10 189 90	regulator	1	2