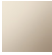


VAIA Wall valve clockwise closing 1/2" - Brushed Bronze
VAIA

36 607 819

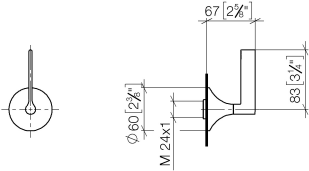
- rosette Ø 60 mm
- head part with cut-to-length spindle and sleeve



	Brushed Bronze	36 607 819-42
	Chrome	36 607 819-00
	Brushed Platinum	36 607 819-06
	Platinum	36 607 819-08
	Dark Chrome	36 607 819-19
	Brushed Durabrass (23kt Gold)	36 607 819-28
	Brushed Champagne (22kt Gold)	36 607 819-46
	Champagne (22kt Gold)	36 607 819-47
	Brushed Dark Platinum	36 607 819-99

36 607 819

mm [inches]



Codes & Standards

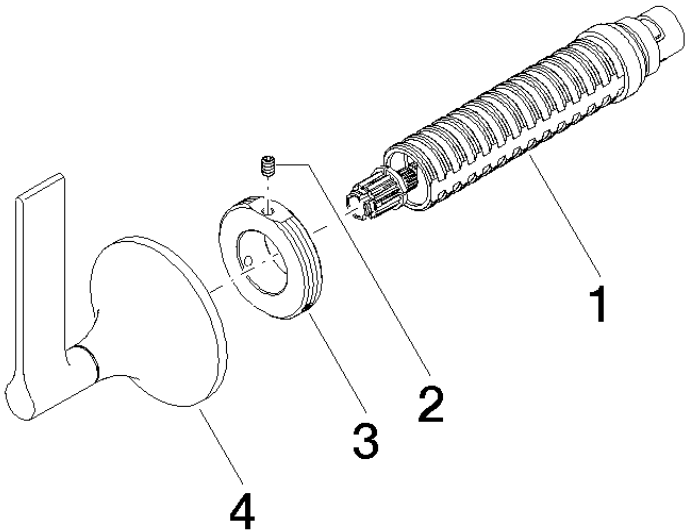
ADA	ASME A112.18.1/CSA B125.1
-----	---------------------------------

Certificates

WRAS_2011026.	LGA_29931.	WRAS_2010066.	DVGW_DW-6512DN0706.
---------------	------------	---------------	---------------------

36 607 819

Parts for other
finishes can be found
here: [Chrome](#)



Spare parts list

No.	Item Number	Name	Quantity used	Delivery time
1	90 90 03 143 00 90	top	1	2
2	09 31 11 008 90	pin	1	2
3	09 21 02 163 90	disc	1	2
4	90 20 80 015 00-42	handle	1	30