

META Wall-mounted single-lever basin mixer without pop-up waste - Brushed Light Gold

META

36 804 661



- 160mm projection
- fixed spout
- circular, air-enriched flow
- hole diameter 60 mm
- rosette Ø 78 mm
- max. flow 4.5 l/min
- lead-free
- with single-point mounting
- This product can help a building meet the requirements of Green Building Rating Systems, e.g. LEED®, BREEAM®, DGNB

| | | |
|--|-------------------------------|--------------------|
|  | Brushed Light Gold | 36 804 661-27 0010 |
|  | Chrome | 36 804 661-00 0010 |
|  | Brushed Platinum | 36 804 661-06 0010 |
|  | Dark Chrome | 36 804 661-19 0010 |
|  | Light Gold | 36 804 661-26 0010 |
|  | Matte Black | 36 804 661-33 0010 |
|  | Brushed Bronze | 36 804 661-42 0010 |
|  | Brushed Champagne (22kt Gold) | 36 804 661-46 0010 |
|  | Champagne (22kt Gold) | 36 804 661-47 0010 |
|  | Brushed Chrome | 36 804 661-93 0010 |
|  | Brushed Dark Platinum | 36 804 661-99 0010 |

Required miscellaneous



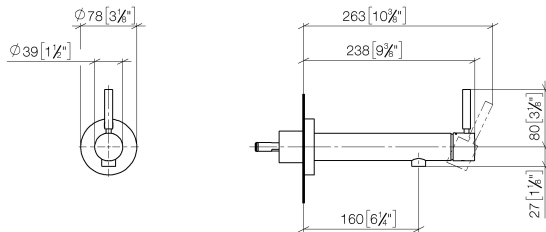
- Concealed wall mounting -** 35 003 970-90
- min. recess depth 78 mm 0010
 - max. recess depth 103 mm



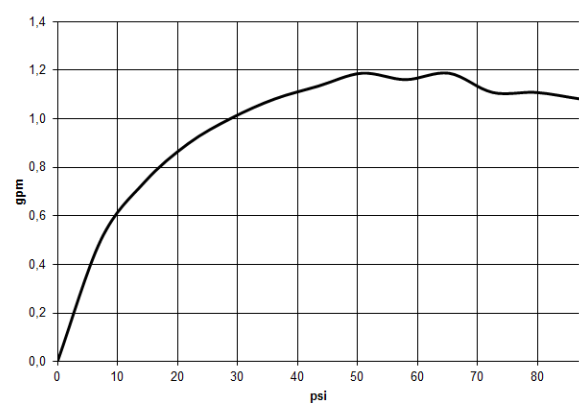
META Wall-mounted single-lever basin mixer without pop-up waste - Brushed Light Gold

META

36 804 661
mm [inches]



Flow rate chart



Codes & Standards

| | | | |
|--------------------|---------------------------------|--|--------------|
| ADA | ASME A112.18.1/CSA B125.1 | California Energy Commission (CEC) | NSF/ANSI 372 |
| NSF/ANSI/CAN 61 | NSF372 | NSF61 | |



META Wall-mounted single-lever basin mixer without pop-up waste - Brushed Light Gold

META

36 804 661

Certificates

IAPMO_6397

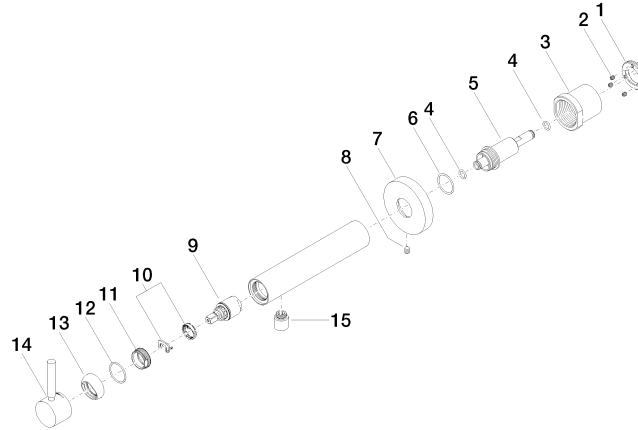
IAPMO_N-4976

**META Wall-mounted single-lever basin mixer without pop-up waste - Brushed
Light Gold**

META

36 804 661

Product version from 4/2/2020





META Wall-mounted single-lever basin mixer without pop-up waste - Brushed Light Gold

META

36 804 661

Spare parts list

Product version from 4/2/2020