

## META Wall-mounted single-lever basin mixer without pop-up waste - Matte Black

META

36 804 661



- 160mm projection
- fixed spout
- circular, air-enriched flow
- hole diameter 60 mm
- rosette Ø 78 mm
- max. flow 4.5 l/min
- lead-free
- with single-point mounting
- This product can help a building meet the requirements of Green Building Rating Systems, e.g. LEED®, BREEAM®, DGNB

	Matte Black	36 804 661-33 0010
	Chrome	36 804 661-00 0010
	Brushed Platinum	36 804 661-06 0010
	Dark Chrome	36 804 661-19 0010
	Light Gold	36 804 661-26 0010
	Brushed Light Gold	36 804 661-27 0010
	Brushed Bronze	36 804 661-42 0010
	Brushed Champagne (22kt Gold)	36 804 661-46 0010
	Champagne (22kt Gold)	36 804 661-47 0010
	Brushed Chrome	36 804 661-93 0010
	Brushed Dark Platinum	36 804 661-99 0010

### Required miscellaneous



- Concealed wall mounting -**
- max. recess depth 103 mm
  - min. recess depth 78 mm

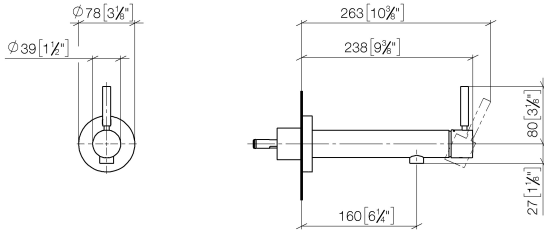
35 003 970-90  
0010



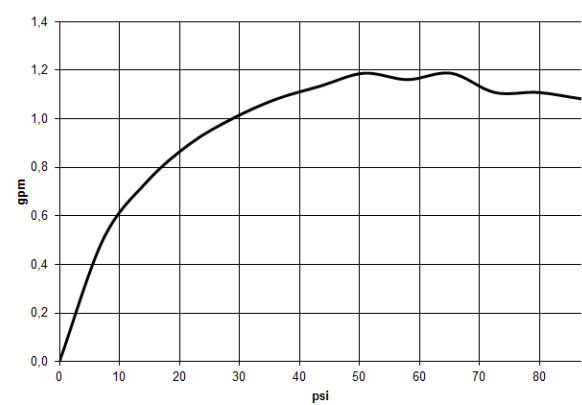
META Wall-mounted single-lever basin mixer without pop-up waste - Matte Black

META


36 804 661  
mm [inches]



Flow rate chart



Codes & Standards

ADA	ASME A112.18.1	ASME A112.18.1/CSA B125.1	California Energy Commission (CEC)
cUPC	EPA WaterSense	NSF/ANSI 372	NSF/ANSI/CAN 61
NSF372	NSF61	Water Sense	WaterSense 



META Wall-mounted single-lever basin mixer without pop-up waste - Matte Black

META

36 804 661  
Certificates

IAPMO_4976	IAPMO_8834	IAPMO_6397	IAPMO_N-4976
------------	------------	------------	--------------

## META Wall-mounted single-lever basin mixer without pop-up waste - Matte Black

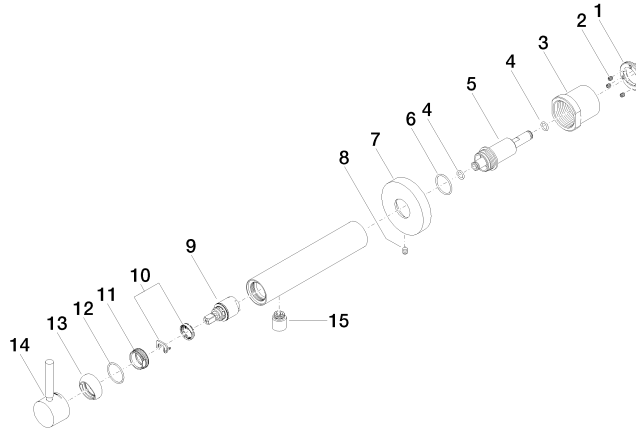
META

36 804 661

Product version up to 1/23/2020

Product version from 1/23/2020 to 4/2/2020

**Product version from 4/2/2020**





META Wall-mounted single-lever basin mixer without pop-up waste - Matte Black

META

36 804 661

Spare parts list

Product version up to 1/23/2020

Product version from 1/23/2020 to 4/2/2020

**Product version from 4/2/2020**

No.	Item Number	Name	Quantity used	Delivery time
	09 24 77 002 90	nut	18	2