



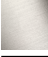
IMO Wall-mounted single-lever basin mixer without pop-up waste - Brushed Chrome

IMO

36 860 670



- 140mm projection
- fixed spout
- rectangular, air-enriched flow
- hole diameter spout 37 mm
- hole diameter single-lever mixer 57 mm
- rosette for spout 80 x 60mm
- rosette for mixer 80 x 80mm
- max. flow 4.5 l/min
- lead-free
- This product can help a building meet the requirements of Green Building Rating Systems, e.g. LEED®, BREEAM®, DGNB

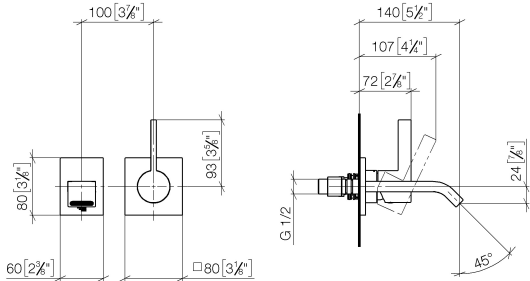
	Brushed Chrome	36 860 670-93 0010
	Chrome	36 860 670-00 0010
	Brushed Platinum	36 860 670-06 0010



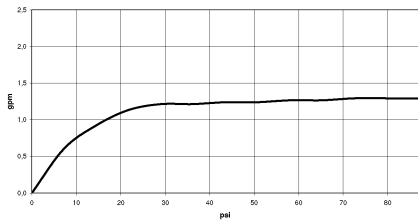
IMO Wall-mounted single-lever basin mixer without pop-up waste - Brushed Chrome

IMO


36 860 670
mm [inches]



Flow rate chart



Codes & Standards

ADA	ASME A112.18.1	ASME A112.18.1/CSA B125.1	California Energy Commission (CEC)
cUPC	EPA WaterSense	NSF/ANSI 372	NSF/ANSI/CAN 61
NSF372	NSF61	Water Sense	WaterSense 



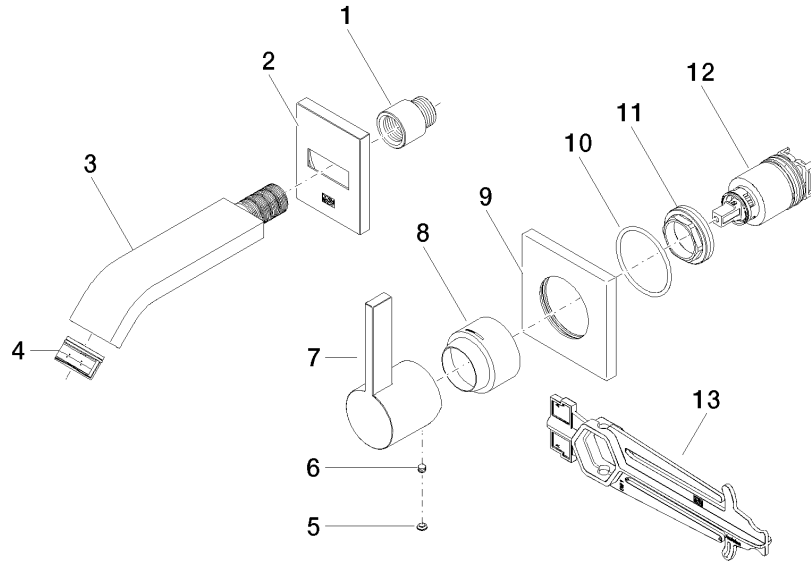
IMO Wall-mounted single-lever basin mixer without pop-up waste - Brushed
Chrome

IMO

36 860 670
Certificates

IAPMO_4976	IAPMO_8834	IAPMO_6397	IAPMO_N-4976
------------	------------	------------	--------------

Product version from 4/1/2024





IMO Wall-mounted single-lever basin mixer without pop-up waste - Brushed Chrome

IMO

36 860 670

Spare parts list

Product version from 4/1/2024

No.	Item Number	Name	Quantity used	Delivery time
	09 24 03 072 10 90	nipple	13	2