

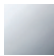


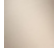


## CL.1 Wall-mounted single-lever basin mixer without pop-up waste - Chrome

CL.1

36 860 705



- 198mm projection
- fixed spout
- rectangular spray pattern with 40 individual jets
- hole diameter spout 37 mm
- hole diameter single-lever mixer 57 mm
- rosette 80 x 80 mm
- max. flow 4.5 l/min
- lead-free
- This product can help a building meet the requirements of Green Building Rating Systems, e.g. LEED®, BREEAM®, DGNB

	Chrome	36 860 705-00
	Brushed Platinum	36 860 705-06
	Dark Chrome	36 860 705-19
	Brushed Champagne (22kt Gold)	36 860 705-46
	Champagne (22kt Gold)	36 860 705-47
	Brushed Dark Platinum	36 860 705-99

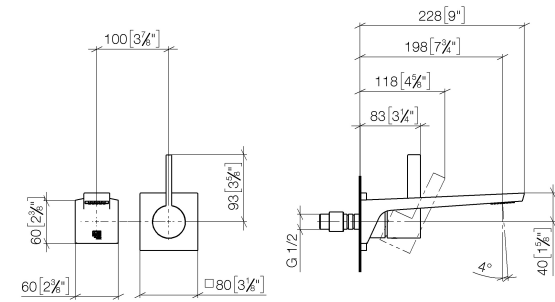
### Required miscellaneous



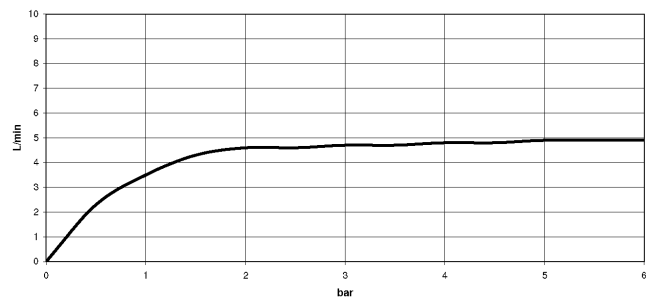
- Concealed wall-mounted single-lever mixer -** 35 860 970-90 0010
- max. recess depth 95 mm
  - min. recess depth 80 mm
  - Rough can be rotated to position the lever on top or to the left of the spout.

36 860 705

mm [inches]



**Flow rate chart**



**Codes & Standards**

ADA

ASME  
A112.18.1/CSA  
B125.1

California Energy  
Commission  
(CEC)

NSF/ANSI 372

NSF/ANSI/CAN  
61

Water Sense





CL.1 Wall-mounted single-lever basin mixer without pop-up waste - Chrome

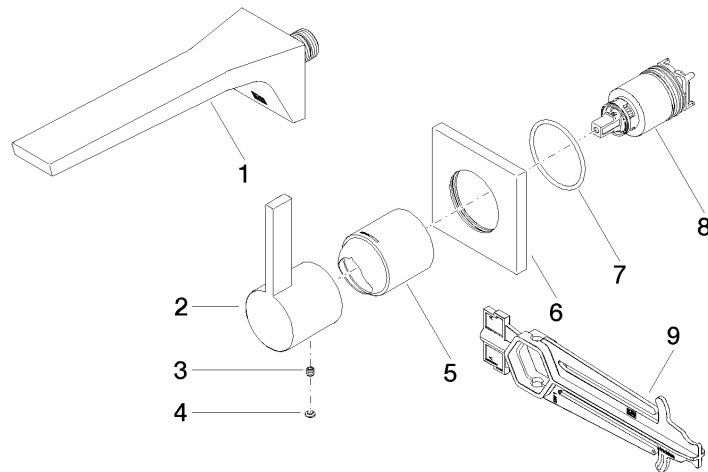
CL.1

36 860 705

Certificates

IAPMO\_N-4976 (2).    DVGW\_DW-6512DN0435.    IAPMO\_8834 (2).    IAPMO\_6397 (2).    IAPMO\_4976 (1).  
LGA\_29900.

36 860 705



## Spare parts list

No.	Item Number	Name	Quantity used	Delivery time
1	13 800 705-00	CL.1 Wall-mounted basin spout without pop-up waste - Chrome	1	2
2	09 20 70 050-00	handle	1	10
3	90 31 11 030 00 90	pin	1	2
4	90 31 20 087 00-00	plug	1	10
5	09 11 02 288-00	cover	1	10
6	09 27 78 039-00	rosette	1	10
7	90 14 10 049 00 90	seal	1	2
8	90 15 05 064 01 90	cartridge	1	2
9	90 30 09 064 00 90	key	1	2