

## VAIA Wall-mounted single-lever basin mixer without pop-up waste - Brushed Platinum

VAIA

36 860 809



- 190mm projection
- fixed spout
- circular, air-enriched flow
- hole diameter spout 37 mm
- hole diameter single-lever mixer 57 mm
- rosette for single-lever mixer Ø 78mm
- rosette for spout Ø 60mm
- max. flow 4.5 l/min
- lead-free
- This product can help a building meet the requirements of Green Building Rating Systems, e.g. LEED®, BREEAM®, DGNB

	Brushed Platinum	36 860 809-06 0010
	Chrome	36 860 809-00 0010
	Platinum	36 860 809-08 0010
	Dark Chrome	36 860 809-19 0010
	Brushed Durabronze (23kt Gold)	36 860 809-28 0010
	Brushed Bronze	36 860 809-42 0010
	Brushed Champagne (22kt Gold)	36 860 809-46 0010
	Champagne (22kt Gold)	36 860 809-47 0010
	Brushed Dark Platinum	36 860 809-99 0010

### Required miscellaneous



#### **Concealed wall-mounted single-lever mixer -**

35 860 970-90 0010

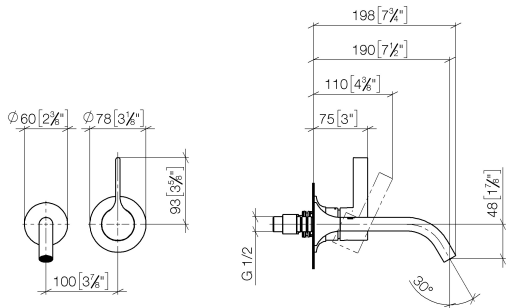
- max. recess depth 95 mm
- min. recess depth 80 mm
- Rough can be rotated to position the lever on top or to the left of the spout.



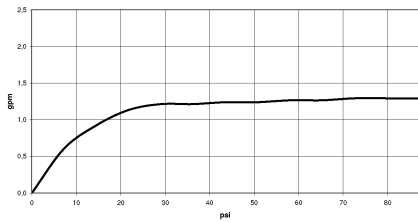
VAIA Wall-mounted single-lever basin mixer without pop-up waste - Brushed Platinum

VAIA


36 860 809  
mm [inches]



Flow rate chart



Codes & Standards

ADA	ASME A112.18.1	ASME A112.18.1/CSA B125.1	California Energy Commission (CEC)
cUPC	EPA WaterSense	NSF/ANSI 372	NSF/ANSI/CAN 61
NSF372	NSF61	Water Sense	WaterSense 



VAIA Wall-mounted single-lever basin mixer without pop-up waste - Brushed  
Platinum

VAIA

---

36 860 809

Certificates

---

IAPMO\_4976

IAPMO\_8834

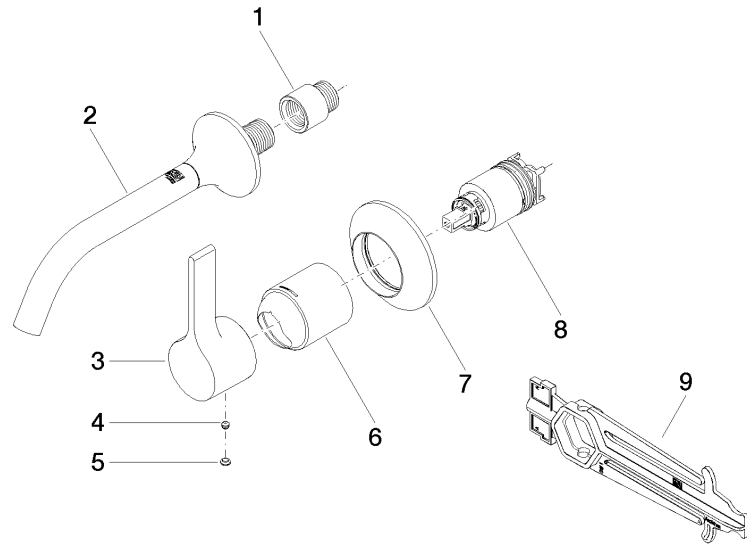
IAPMO\_6397

IAPMO\_N-4976

**VAIA Wall-mounted single-lever basin mixer without pop-up waste - Brushed  
Platinum**

VAIA

36 860 809





VAIA Wall-mounted single-lever basin mixer without pop-up waste - Brushed  
Platinum

VAIA

36 860 809

**Spare parts list**

No.	Item Number	Name	Quantity used	Delivery time
	09 24 03 072 10 90	nipple	9	2