

VAIA Wall-mounted single-lever basin mixer without pop-up waste - Dark Chrome

VAIA

36 860 809



- 190mm projection
- fixed spout
- circular, air-enriched flow
- hole diameter spout 37 mm
- hole diameter single-lever mixer 57 mm
- rosette for single-lever mixer Ø 78mm
- rosette for spout Ø 60mm
- max. flow 4.5 l/min
- lead-free
- This product can help a building meet the requirements of Green Building Rating Systems, e.g. LEED®, BREEAM®, DGNB

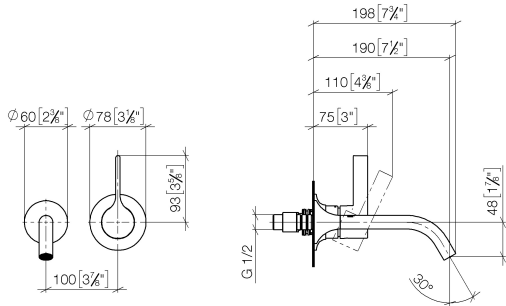
| | | |
|--|--------------------------------|--------------------|
|  | Dark Chrome | 36 860 809-19 0010 |
|  | Chrome | 36 860 809-00 0010 |
|  | Brushed Platinum | 36 860 809-06 0010 |
|  | Platinum | 36 860 809-08 0010 |
|  | Brushed Durabronze (23kt Gold) | 36 860 809-28 0010 |
|  | Brushed Bronze | 36 860 809-42 0010 |
|  | Brushed Champagne (22kt Gold) | 36 860 809-46 0010 |
|  | Champagne (22kt Gold) | 36 860 809-47 0010 |
|  | Brushed Dark Platinum | 36 860 809-99 0010 |



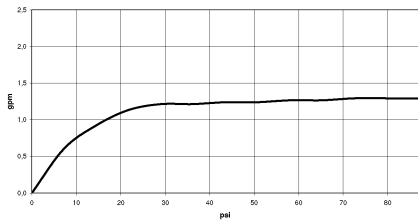
VAIA Wall-mounted single-lever basin mixer without pop-up waste - Dark Chrome

VAIA

36 860 809
mm [inches]



Flow rate chart



Codes & Standards

| | | | |
|--------------------|---------------------------------|--|--------------|
| ADA | ASME A112.18.1/CSA B125.1 | California Energy Commission (CEC) | NSF/ANSI 372 |
| NSF/ANSI/CAN 61 | NSF372 | NSF61 | |



VAIA Wall-mounted single-lever basin mixer without pop-up waste - Dark Chrome

VAIA

36 860 809

Certificates

IAPMO_6397

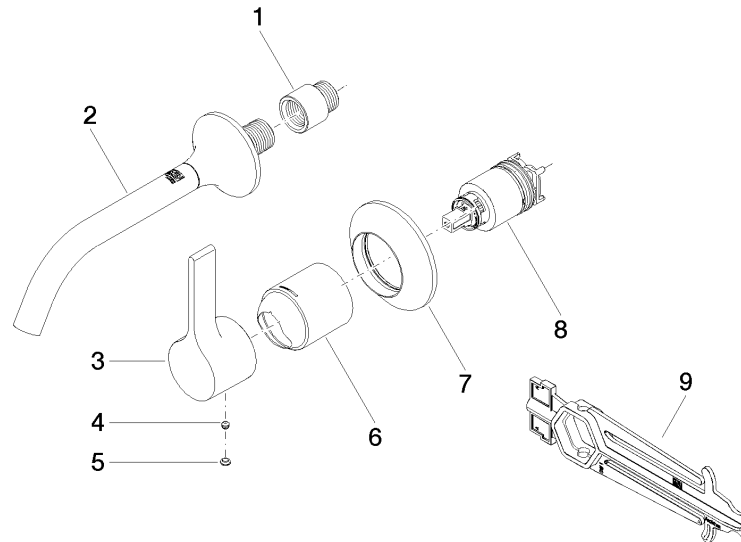
IAPMO_N-4976

VAIA Wall-mounted single-lever basin mixer without pop-up waste - Dark Chrome

VAIA

36 860 809

Parts for other
finishes can be found
here: [Chrome](#)





VAIA Wall-mounted single-lever basin mixer without pop-up waste - Dark Chrome

VAIA

36 860 809

Spare parts list