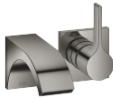


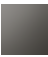

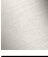


CYO Wall-mounted single-lever basin mixer without pop-up waste - Dark Chrome

CYO

36 860 811



- 160mm projection
- fixed spout
- rectangular, air-enriched flow
- hole diameter spout 37 mm
- hole diameter single-lever mixer 57 mm
- rosette for mixer 80 x 80mm
- max. flow 4.5 l/min
- lead-free
- This product can help a building meet the requirements of Green Building Rating Systems, e.g. LEED®, BREEAM®, DGNB
- WRAS 2107047

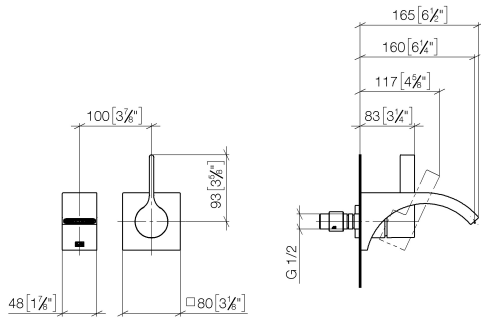
	Dark Chrome	36 860 811-19
	Chrome	36 860 811-00
	Brushed Platinum	36 860 811-06
	Brushed Durabross (23kt Gold)	36 860 811-28
	Brushed Dark Platinum	36 860 811-99



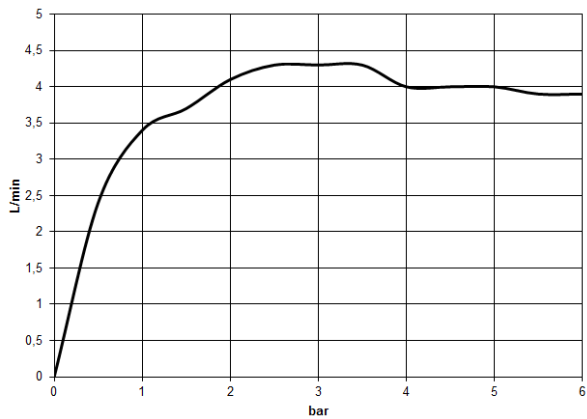
CYO Wall-mounted single-lever basin mixer without pop-up waste - Dark Chrome

CYO

36 860 811  
mm [inches]



Flow rate chart



Codes & Standards

California Energy Commission (CEC)	NSF372	NSF61
------------------------------------	--------	-------



## CYO Wall-mounted single-lever basin mixer without pop-up waste - Dark Chrome

---

CYO

36 860 811

Certificates

---

IAPMO\_6397

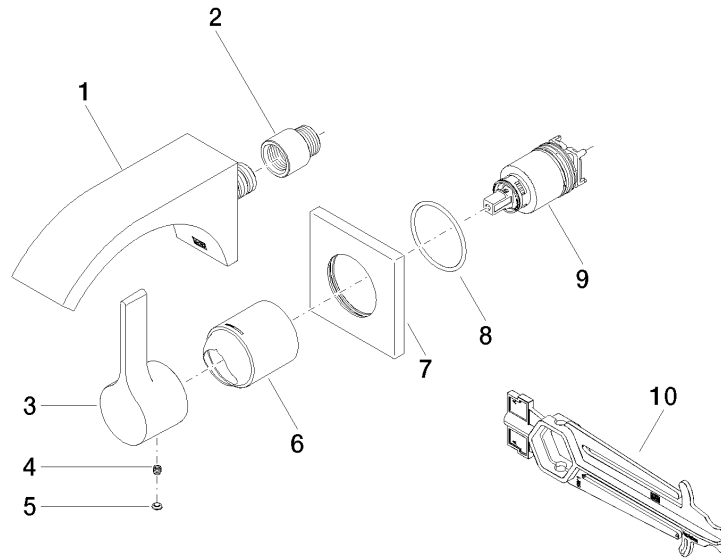
IAPMO\_N-4976

## CYO Wall-mounted single-lever basin mixer without pop-up waste - Dark Chrome

CYO

36 860 811

Parts for other  
finishes can be found  
here: [Chrome](#)





CYO Wall-mounted single-lever basin mixer without pop-up waste - Dark Chrome

CYO

36 860 811

Spare parts list

No.	Item Number	Name	Quantity used	Delivery time
	13 800 811-19	CYO Wall-mounted basin spout without pop-up waste - Dark Chrome	10	20