

## MEM Wall-mounted single-lever basin mixer with cover plate without pop-up waste - Brushed Platinum

MEM

36 863 782



- 177mm projection
- fixed spout
- rectangular, air-enriched flow
- hole diameter spout 37 mm
- hole diameter single-lever mixer 57 mm
- cover plate 80 x 180 mm
- max. flow 4.5 l/min
- lead-free
- This product can help a building meet the requirements of Green Building Rating Systems, e.g. LEED®, BREEAM®, DGNB

|  |                                |                    |
|--|--------------------------------|--------------------|
|  | Brushed Platinum               | 36 863 782-06 0010 |
|  | Chrome                         | 36 863 782-00 0010 |
|  | Platinum                       | 36 863 782-08 0010 |
|  | Dark Chrome                    | 36 863 782-19 0010 |
|  | Brushed Durabronze (23kt Gold) | 36 863 782-28 0010 |
|  | Brushed Champagne (22kt Gold)  | 36 863 782-46 0010 |
|  | Champagne (22kt Gold)          | 36 863 782-47 0010 |
|  | Brushed Dark Platinum          | 36 863 782-99 0010 |

### Required miscellaneous



#### **Concealed wall-mounted single-lever mixer -**

35 860 970-90 0010

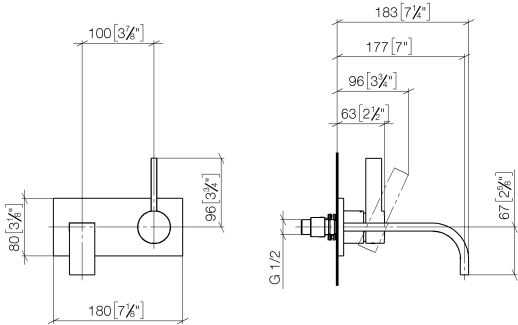
- max. recess depth 95 mm
- min. recess depth 80 mm
- Rough can be rotated to position the lever on top or to the left of the spout.



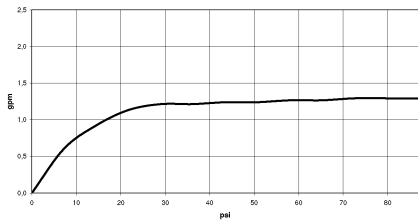
MEM Wall-mounted single-lever basin mixer with cover plate without pop-up waste - Brushed Platinum

MEM


36 863 782  
mm [inches]



Flow rate chart



Codes & Standards

|        |                |                           |  |
|--------|----------------|---------------------------|--|
| ADA    | ASME A112.18.1 | ASME A112.18.1/CSA B125.1 | California Energy Commission (CEC)   |
| cUPC   | EPA WaterSense | NSF/ANSI 372              | NSF/ANSI/CAN 61  |
| NSF372 | NSF61          | Water Sense               | WaterSense  |



MEM Wall-mounted single-lever basin mixer with cover plate without pop-up  
waste - Brushed Platinum

---

MEM

36 863 782

Certificates

---

IAPMO\_4976

IAPMO\_8834

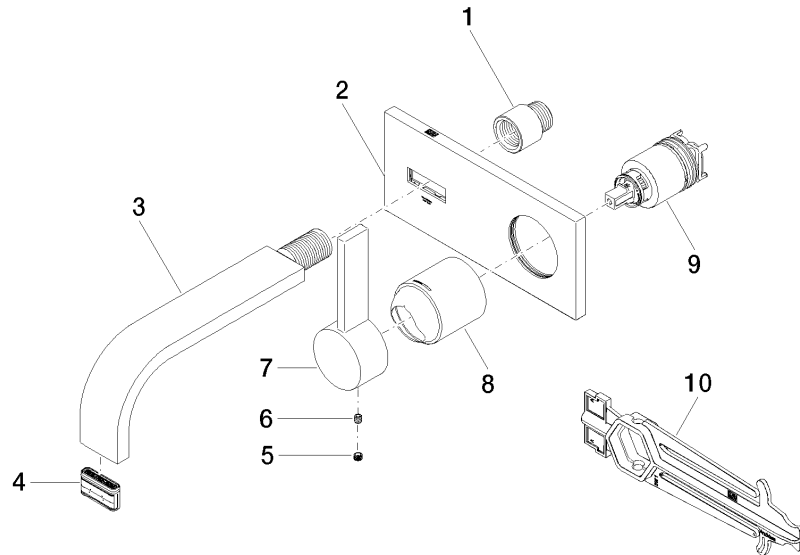
IAPMO\_6397

IAPMO\_N-4976

**MEM Wall-mounted single-lever basin mixer with cover plate without pop-up  
waste - Brushed Platinum**

MEM

36 863 782





MEM Wall-mounted single-lever basin mixer with cover plate without pop-up waste - Brushed Platinum

MEM

36 863 782

Spare parts list

| No. | Item Number        | Name   | Quantity used | Delivery time |
|-----|--------------------|--------|---------------|---------------|
|     | 09 24 03 072 10 90 | nipple | 10            | 2             |