

Shower set - Matte Black

IMO

ST 050 203 2979



Fits: IMO, LISSÉ, META

- slide bar
- Pipe diameter 18 mm
- gauge 853 mm
- metal shower hose 1750mm with integrated anti-twist protection
- shower hose connector 3/8"
- Three or five settings: COMPACT RAIN, COMPACT SOFT FLOW, COMPACT AQUAPRESSURE FLOW, max. flow rate 6.8 l/min (at 3 bar)
- Function from: 6 l/min
- spray head Ø 100mm
- This product can help a building meet the requirements of Green Building Rating Systems, e.g. LEED®, BREEAM®, DGNB

| | | |
|--|-------------------------------|-------------------------|
|  | Matte Black | ST 050 203 2979-33 0010 |
|  | Chrome | ST 050 203 2979-00 0010 |
|  | Brushed Platinum | ST 050 203 2979-06 0010 |
|  | Platinum | ST 050 203 2979-08 0010 |
|  | Dark Chrome | ST 050 203 2979-19 0010 |
|  | Light Gold | ST 050 203 2979-26 0010 |
|  | Brushed Light Gold | ST 050 203 2979-27 0010 |
|  | Brushed Durabrass (23kt Gold) | ST 050 203 2979-28 0010 |
|  | Brushed Bronze | ST 050 203 2979-42 0010 |
|  | Brushed Champagne (22kt Gold) | ST 050 203 2979-46 0010 |
|  | Champagne (22kt Gold) | ST 050 203 2979-47 0010 |
|  | Brushed Chrome | ST 050 203 2979-93 0010 |
|  | Brushed Dark Platinum | ST 050 203 2979-99 0010 |

Individual components of this set

You need the following components for this set



1x 26 413 979-33



1x 28 018 979-33 0010

Shower set - Matte Black

IMO

ST 050 203 2979



Fits: IMO, LULU, MEM, TARA, CL.1, LISSÉ,
VAIA, META, CYO

- slide bar
- Pipe diameter 18 mm
- gauge 853 mm
- metal shower hose 1750mm with integrated anti-twist protection
- shower hose connector 3/8"
- WRAS 2009048

This article does not include a hand shower!

NOTE: Hand shower sold separately. Please see hand shower options under the miscellaneous articles section of each series.

| | | |
|--|-------------------------------|--------------|
|  | Matte Black | 26 413 979-3 |
|  | Chrome | 26 413 979-0 |
|  | Brushed Platinum | 26 413 979-0 |
|  | Platinum | 26 413 979-0 |
|  | Dark Chrome | 26 413 979-1 |
|  | Light Gold | 26 413 979-2 |
|  | Brushed Light Gold | 26 413 979-2 |
|  | Brushed Durabrass (23kt Gold) | 26 413 979-2 |
|  | Brushed Bronze | 26 413 979-4 |
|  | Brushed Champagne (22kt Gold) | 26 413 979-4 |
|  | Champagne (22kt Gold) | 26 413 979-4 |
|  | Brushed Chrome | 26 413 979-9 |
|  | Brushed Dark Platinum | 26 413 979-9 |


ST 050 203 2979

:3
—
0
—
6
—
8
—
9
—
6
—
.7
—
8
—
2
—
6
—
.7
—
13
—
19
—


Recommended miscellaneous

| | | |
|---|----------------------------|-----------------------|
|  | Concealed adapter - | 35 080 970-90 0010 |
|---|----------------------------|-----------------------|

Required miscellaneous

| | | |
|---|---|-----------------------|
|  | Hand shower FlowReduce - Matte Black | 28 016 979-33 0010 |
|---|---|-----------------------|

Required miscellaneous

| | | |
|---|---|-----------------------|
|  | Hand shower FlowReduce - Matte Black | 28 018 979-33 0010 |
|---|---|-----------------------|


Required miscellaneous

| | | |
|---|---|-----------------------|
|  | SERIES-VARIOUS Hand shower - Matte Black | 28 025 979-33 0010 |
|---|---|-----------------------|

Recommended miscellaneous

| | | |
|---|---------------------------------|---------------|
|  | Wall elbow - Matte Black | 28 450 980-33 |
|---|---------------------------------|---------------|

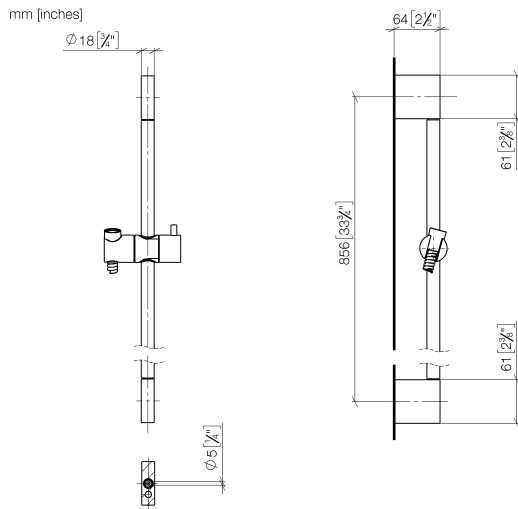
Required miscellaneous

| | | |
|---|---|-----------------------|
|  | Hand shower FlowReduce - Matte Black | 28 012 979-33 0010 |
|---|---|-----------------------|

Required miscellaneous

| | | |
|---|---|-----------------------|
|  | SERIES-VARIOUS Hand shower - Matte Black | 28 029 979-33 0010 |
|---|---|-----------------------|

ST 050 203 2979



Certificates

IAPMO_4976

WRAS_2009

ACS_20 ACC LY



Shower set - Matte Black

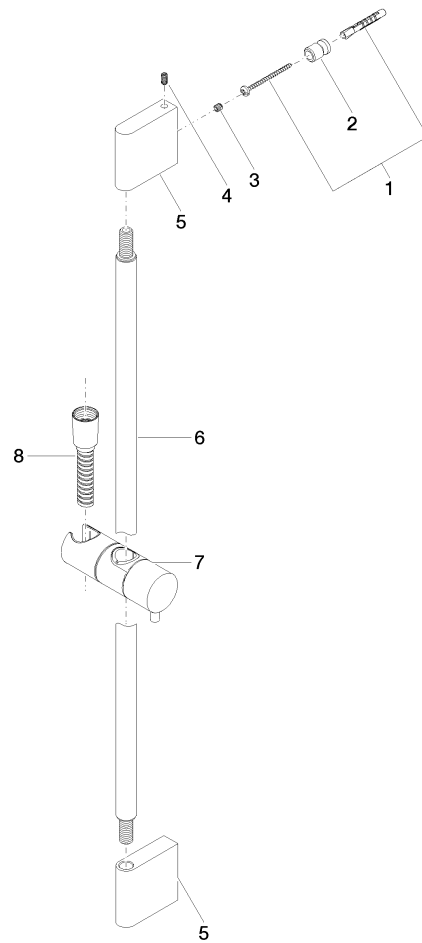
IMO

ST 050 203 2979

Codes & Standards

| | | | |
|----------------|------|---------------------------|--------------------------------|
| ASME A112.18.1 | cUPC | Scottish Water Byelaws | UK Water Supply Regulations |
| XP P 41-280 | | | |

Product version from 10/1/2023





ST 050 203 2979

Spare parts list

Product version from 10/1/2023

| No. | Item Number | Name | Quantity used | Delivery time |
|-----|--------------------|------------|---------------|---------------|
| | 05 17 20 726 02 90 | fixing set | 13 | 2 |

Error: Subreport could not be shown.