

SYMETRICS Showerpipe with shower thermostat - Brushed Light Gold

IMO

ST 050 305 9980



Fits: IMO, MEM, CL.1, CYO

- shower with fixed riser projection 453mm
- Rain shower: PURE RAIN, max. flow rate 6.8 l/min (at 3 bar)
- Function from: 6 l/min
- rain shower 300 x 240mm
- rain shower with anti-scale system
- Hand shower: COMPACT RAIN, max. flow rate 6.8 l/min (at 3 bar)
- spray head Ø 100mm
- rotary diverter with volume control and shut-off function
- slide-on rosettes Ø 70 mm
- height of fittings up to rain shower (bottom edge) 1009mm
- height of fittings up to top edge of elbow 1150mm
- gauge 150 mm - 13 mm
- metal shower hose 1750mm with integrated anti-twist protection
- 1/2" connection
- slide bar
- Pipe diameter 23.5 mm

Intrinsic protection against back flow.

NOTE: Hand shower sold separately. Please see hand shower options under the miscellaneous articles section of each series.

	Brushed Light Gold	ST 050 305 9980-27 0010
	Chrome	ST 050 305 9980-00 0010
	Chrome	ST 050 306 0980-00
	Brushed Platinum	ST 050 305 9980-06 0010
	Brushed Platinum	ST 050 306 0980-06
	Platinum	ST 050 305 9980-08 0010
	Platinum	ST 050 306 0980-08
	Dark Chrome	ST 050 305 9980-19 0010
	Dark Chrome	ST 050 306 0980-19
	Brushed Light Gold	ST 050 306 0980-27
	Brushed Durabrass (23kt Gold)	ST 050 305 9980-28 0010
	Brushed Durabrass (23kt Gold)	ST 050 306 0980-28
	Matte Black	ST 050 305 9980-33 0010
	Matte Black	ST 050 306 0980-33
	Brushed Bronze	ST 050 305 9980-42 0010
	Brushed Bronze	ST 050 306 0980-42
	Brushed Champagne (22kt Gold)	ST 050 305 9980-46 0010
	Brushed Champagne (22kt Gold)	ST 050 306 0980-46
	Champagne (22kt Gold)	ST 050 305 9980-47 0010
	Champagne (22kt Gold)	ST 050 306 0980-47
	Brushed Chrome	ST 050 305 9980-93 0010
	Brushed Chrome	ST 050 306 0980-93
	Brushed Dark Platinum	ST 050 305 9980-99 0010
	Brushed Dark Platinum	ST 050 306 0980-99

Individual components of this set

You need the following components for this set

1x 28 018 979-27 0010



1x 34 459 980-27 0010



Error: Subreport could not be shown.



Fits: IMO, MEM, CL.1, CYO

- shower with fixed riser projection 453mm
 - overhead shower: rain flow
 - rain shower 300 x 240mm
 - rain shower with anti-scale system
 - max. rainshower flow 6.8 l/min
 - Function from: 6 l/min
 - rotary diverter with volume control and shut-off function
 - slide-on rosettes Ø 70 mm
 - height of fittings up to rain shower (bottom edge) 1009mm
 - height of fittings up to top edge of elbow 1150mm
 - gauge 150 mm - 13 mm
 - metal shower hose 1750mm with integrated anti-twist protection
 - 1/2" connection
 - slide bar
 - Pipe diameter 23.5 mm
 - quick clearing
 - This product reduces water consumption by % (compared to requirements of EPAct '92)
 - This product can contribute to Water Use Reduction in LEED® Green Building Rating
- Intrinsic protection against back flow.**

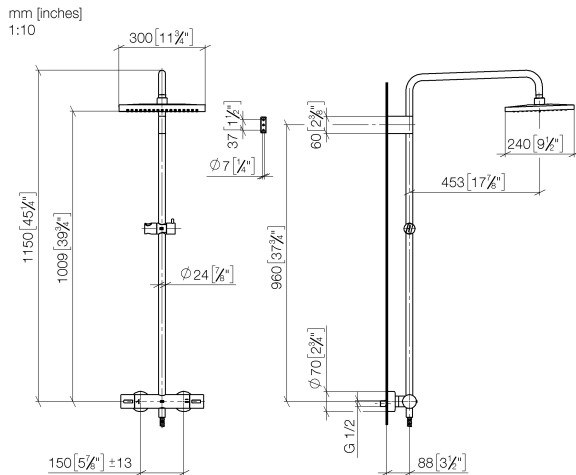
NOTE: Hand shower sold separately. Please see hand shower options under the miscellaneous articles section of each series.

Intrinsic protection against back flow.

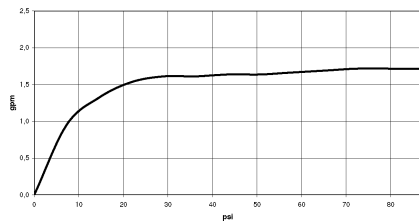
NOTE: Hand shower sold separately. Please see hand shower options under the miscellaneous articles section of each series.

	Brushed Light Gold	34 459 980-27 001
	Chrome	34 459 980-00 001
	Brushed Platinum	34 459 980-06 001
	Platinum	34 459 980-08 001
	Dark Chrome	34 459 980-19 001
	Brushed Durabronze (23kt Gold)	34 459 980-28 001
	Matte Black	34 459 980-33 001
	Brushed Champagne (22kt Gold)	34 459 980-46 001
	Champagne (22kt Gold)	34 459 980-47 001
	Brushed Chrome	34 459 980-93 001
	Brushed Dark Platinum	34 459 980-99 001

ST 050 305 9980



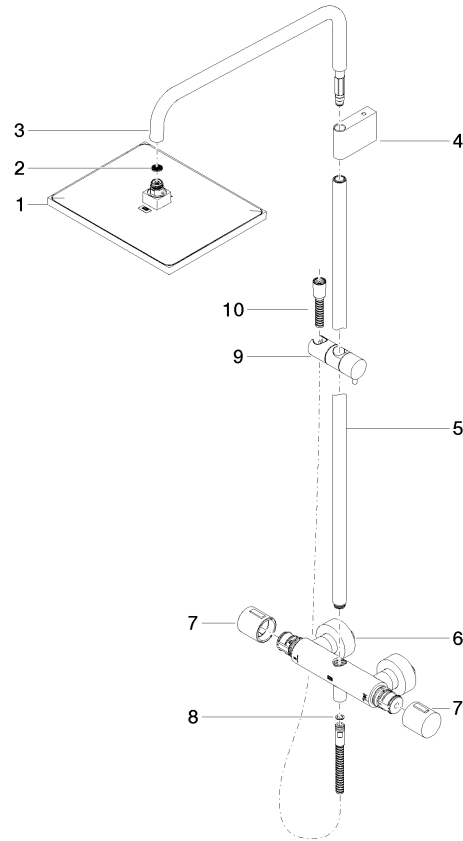
Flow rate chart



Codes & Standards

ASME	California Energy
A112.18.1/CSA	Commission
B125.1	(CEC)

Product version from 6/1/2024





SYMETRICS Showerpipe with shower thermostat - Brushed Light Gold

IMO

ST 050 305 9980

Spare parts list

Product version from 6/1/2024

No.	Item Number	Name	Quantity used	Delivery time
	04 12 05 063 10-27	shower	10	60