

# TARA Shower pipe with shower mixer 300 mm - Champagne (22kt Gold)

TARA

ST 050 309 1892

## Individual components of this set

You need the following components for this set



1x 26 622 892-47 0010



1x 28 018 979-47 0010

## TARA Shower pipe with shower mixer 300 mm - Champagne (22kt Gold)

TARA

ST 050 309 1892



- shower with fixed riser projection 420mm
- overhead shower: rain flow
- rain shower Ø 300 mm
- rain shower with anti-scale system
- max. rainshower flow 6.8 l/min
- Function from: 6.5 l/min
- rotary diverter for fixed-riser shower/hand shower
- height of fittings up to rain shower (bottom edge) 850mm
- height of fittings up to top edge of elbow 1167mm
- rosette for shower holder Ø 55mm
- rosette for wall mounting Ø 57mm
- rosette for shower mixer Ø 65mm
- gauge 150 mm - 13 mm
- 1500 mm metal shower hose
- 1/2" connection
- Pipe diameter 20 mm
- quick clearing

This article does not include a hand shower!

Intrinsic protection against back flow.

	Champagne (22kt Gold)	26 622 892-47 001
	Chrome	26 622 892-00 001
	Brushed Platinum	26 622 892-06 001
	Platinum	26 622 892-08 001
	Dark Chrome	26 622 892-19 001
	Brushed Durabronze (23kt Gold)	26 622 892-28 001
	Matte Black	26 622 892-33 001
	Brushed Champagne (22kt Gold)	26 622 892-46 001
	Brushed Chrome	26 622 892-93 001
	Brushed Dark Platinum	26 622 892-99 001



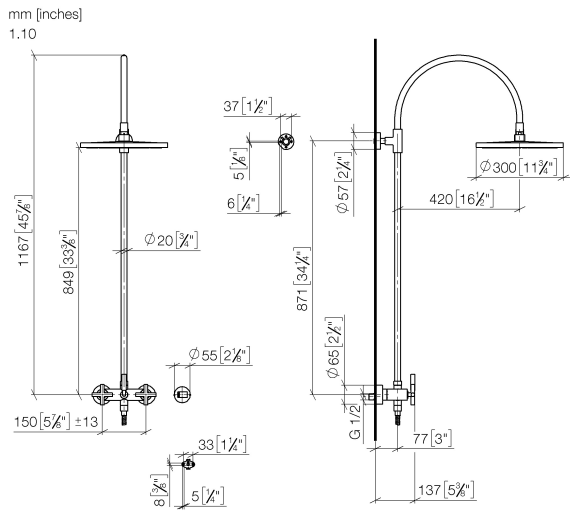
TARA Shower pipe with shower mixer 300 mm - Champagne (22kt Gold)

TARA

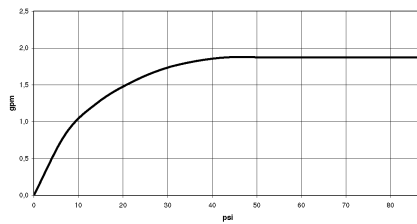
ST 050 309 1892

[illegible]

ST 050 309 1892

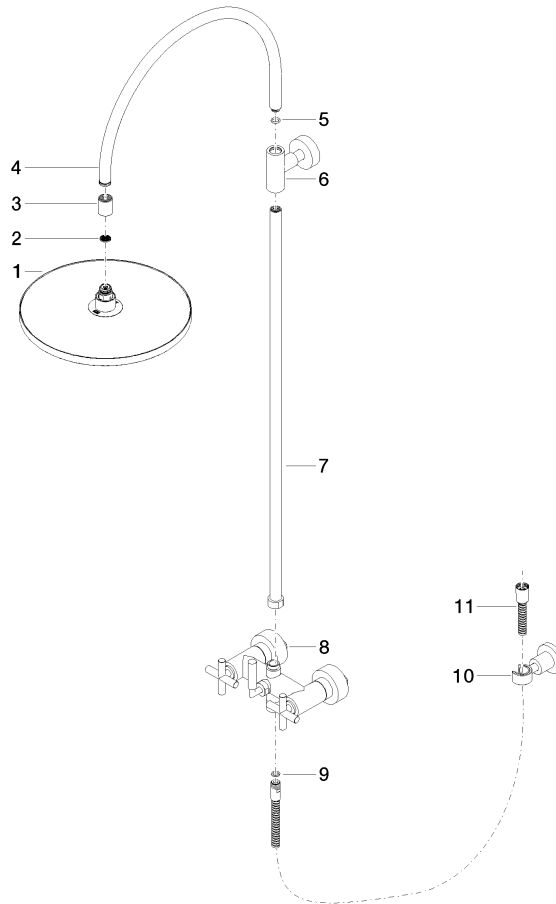


### Flow rate chart





Parts for other  
finishes can be found  
here: [Chrome](#)





TARA Shower pipe with shower mixer 300 mm - Champagne (22kt Gold)

TARA

ST 050 309 1892

Spare parts list

No.	Item Number	Name	Quantity used	Delivery time
	04 12 05 091 10-47	shower	11	30

Error: Subreport could not be shown.