







MADISON xTOOL Thermostat module with 2 valves - Platinum

MADISON

ST 060 105 8360



- cover plate Ø 124 mm
- rosette Ø 55 mm
- temperature control handle with safety limit stop at 38°C

	Platinum	ST 060 105 8360-08
	Chrome	ST 060 105 8360-00
	Brushed Platinum	ST 060 105 8360-06
	Durabrand (23kt Gold)	ST 060 105 8360-09
	Brushed Durabrand (23kt Gold)	ST 060 105 8360-28
	Brushed Dark Platinum	ST 060 105 8360-99

Individual components of this set

You need the following components for this set

1x 36 416 977-08









MADISON xTOOL Thermostat module with 2 valves - Platinum
MADISON

ST 060 105 8360



- cover plate Ø 124 mm
- temperature control handle with safety limit stop at 38°C

	Platinum	36 416 977-0
	Chrome	36 416 977-0
	Brushed Platinum	36 416 977-0
	Durabrand (23kt Gold)	36 416 977-0
	Brushed Durabrand (23kt Gold)	36 416 977-2
	Brushed Dark Platinum	36 416 977-9

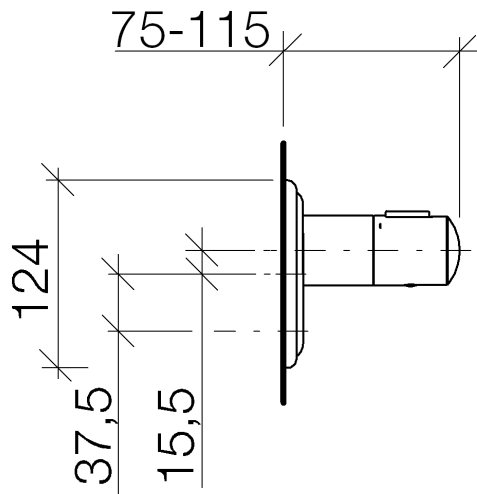
ST 060 105 8360

8
—
10
—
16
—
19
—
18
—
19
—

Required miscellaneous



xTOOL Concealed thermostat module - 35 517 970-90
0010
●max. recess depth 110 mm
●min. recess depth 80 mm



Certificates

IAPMO_4976

Codes & Standards

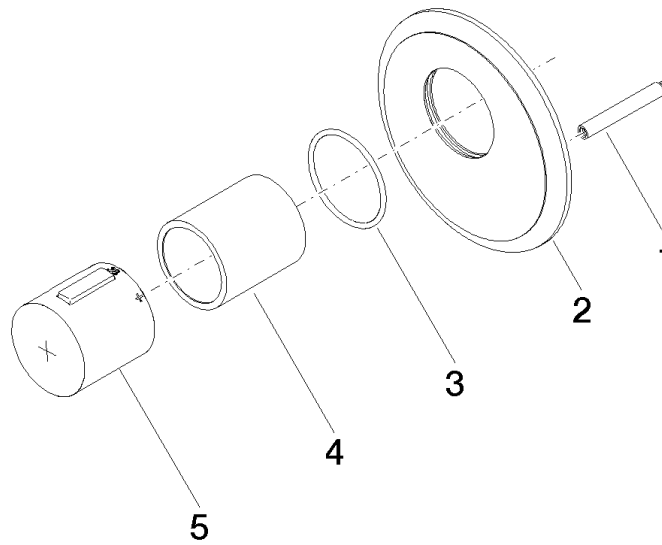
ASME A112.18.1 cUPC

ST 060 105 8360

Product version up to 2/2/2021

Product version from 1/1/2022

Product version from 6/30/2022 to 11/25/2021



ST 060 105 8360

Spare parts list

Product version up to 2/2/2021

Product version from 1/1/2022

Product version from 6/30/2022 to 11/25/2021

No.	Item Number	Name	Quantity used	Delivery time
	90 31 09 095 00 90	bar	5	2