





ST 060 112 1360

- cover plate Ø 124 mm
- rosette Ø 55 mm
- temperature control handle with safety limit stop at 38°C
- thermostat cartridge
- 3x head part with cut-to-length spindle and sleeve

Individual components of this set

You need the following components for this set

	1x	36 503 977-00		3x	36 607 361-00
					

ST 060 112 1360



- cover plate Ø 124 mm
- temperature control handle with safety limit stop at 38°C
- thermostat cartridge
- WRAS 2011026

Recommended miscellaneous



**xGRID Attachment set for
integrating in the dry wall
construction -**

12 340 970 90

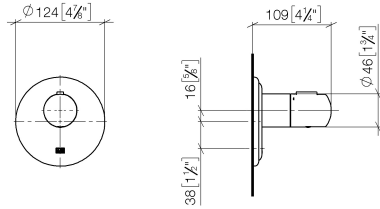
Required miscellaneous



xGRID Installation track 555 mm - 12 360 970 90

ST 060 112 1360

mm [inches]



Certificates

LGA_29	LGA_29	DVGW_DW-6512DN0	WRAS_2011
--------	--------	-----------------	-----------

Codes & Standards

ASME A112.18.1/CSA B125.1	DIN 4109	EN 1111	ISO 3822
Scottish Water Byelaws	UK Water Supply Regulations	Ü-Zeichen	

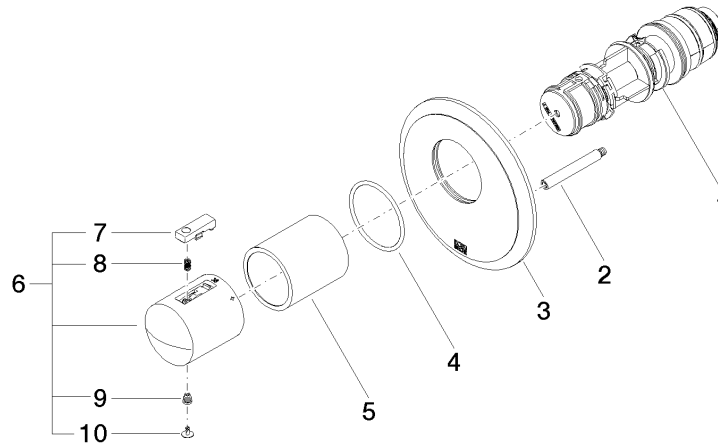
ST 060 112 1360

Product version up to 2/2/2021

Product version from 5/11/2021 to 11/25/2021

Product version from 1/1/2022

Product version from 6/30/2022 to 5/11/2021



ST 060 112 1360

Spare parts list

Product version up to 2/2/2021

Product version from 5/11/2021 to 11/25/2021

Product version from 1/1/2022

Product version from 6/30/2022 to 5/11/2021

No.	Item Number	Name	Quantity used	Delivery time
	90 15 02 063 00 90	cartridge	10	2







MADISON xTOOL Thermostat module with 3 valves - Chrome

MADISON

ST 060 112 1360




- rosette Ø 55 mm
- head part with cut-to-length spindle and sleeve
- 3x porcelain insert: HOT, COLD and NEUTRAL
- WRAS 2011026, 2010066

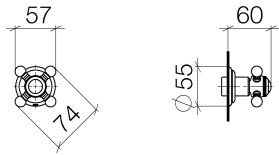
	Chrome	36 607 361-0
	Brushed Platinum	36 607 361-0
	Platinum	36 607 361-0
	Durabrand (23kt Gold)	36 607 361-0
	Brushed Durabrand (23kt Gold)	36 607 361-2
	Brushed Dark Platinum	36 607 361-9

ST 060 112 1360

0
—
6
—
8
—
9
—
8
—
9
—

Required miscellaneous

	Wall valve 1/2" -	35 607 970-90
	•max. recess depth 145 mm	0010
	•min. recess depth 75 mm	

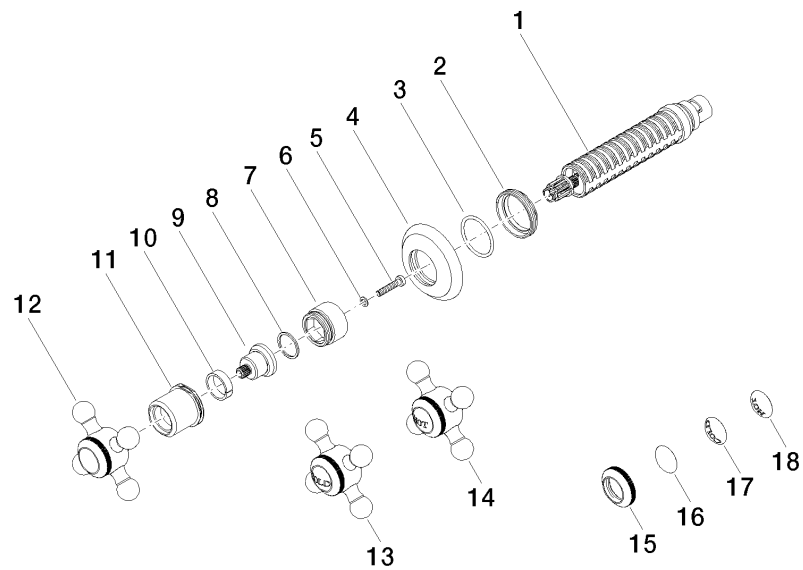


Certificates

IAPMO_4976	DVGW_DW-6501DN0	WRAS_2010	LGA_29	LGA_29
DVGW_DW-6512DN0	WRAS_2011			

Codes & Standards

ADA	ASME A112.18.1	ASME A112.18.1/CSA B125.1	cUPC
DIN 4109	EN 1111	EN 200	ISO 3822
Scottish Water Byelaws	UK Water Supply Regulations	Ü-Zeichen	





MADISON xTOOL Thermostat module with 3 valves - Chrome

MADISON

ST 060 112 1360

Spare parts list

No.	Item Number	Name	Quantity used	Delivery time
	90 90 03 143 00 90	top	18	2