

ST 060 112 7819



- cover plate Ø 124 mm
- rosette Ø 60 mm
- temperature control handle with safety limit stop at 38°C
- thermostat cartridge
- 3x head part with cut-to-length spindle and sleeve

Individual components of this set

You need the following components for this set



1x 36 503 979-19



3x 36 607 819-19

ST 060 112 7819



- cover plate Ø 124 mm
- temperature control handle with safety limit stop at 38°C
- thermostat cartridge
- WRAS 2011026

Recommended miscellaneous



**xGRID Attachment set for
integrating in the dry wall
construction -**

12 340 970 90

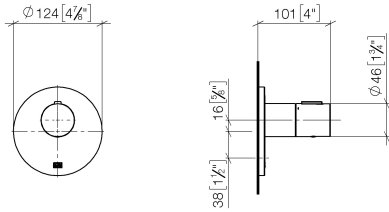
Required miscellaneous



xGRID Installation track 555 mm - 12 360 970 90

ST 060 112 7819

mm [inches]

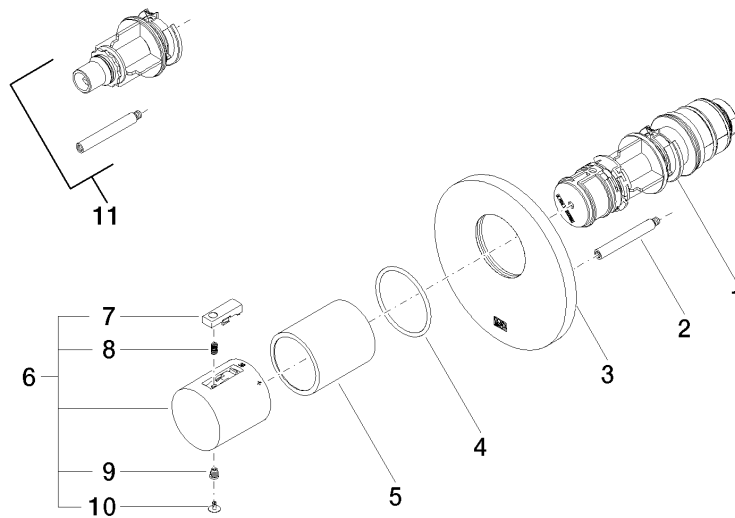


Certificates

LGA_29	DVGW_DW-6512DN0	WRAS_2011
--------	-----------------	-----------

Codes & Standards

ASME A112.18.1/CSA B125.1	DIN 4109	EN 1111	ISO 3822
Scottish Water Byelaws	UK Water Supply Regulations	Ü-Zeichen	





ST 060 112 7819

Spare parts list



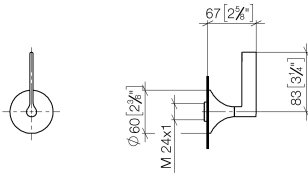
- rosette Ø 60 mm
- head part with cut-to-length spindle and sleeve
- WRAS 2011026, 2010066

	Dark Chrome	36 607 819-1
	Chrome	36 607 819-0
	Brushed Platinum	36 607 819-0
	Platinum	36 607 819-0
	Brushed Durabronze (23kt Gold)	36 607 819-2
	Brushed Bronze	36 607 819-4
	Brushed Champagne (22kt Gold)	36 607 819-4
	Champagne (22kt Gold)	36 607 819-4
	Brushed Dark Platinum	36 607 819-9

9
—
10
—
16
—
18
—
18
—
2
—
6
—
7
—
19
—

ST 060 112 7819

mm [inches]

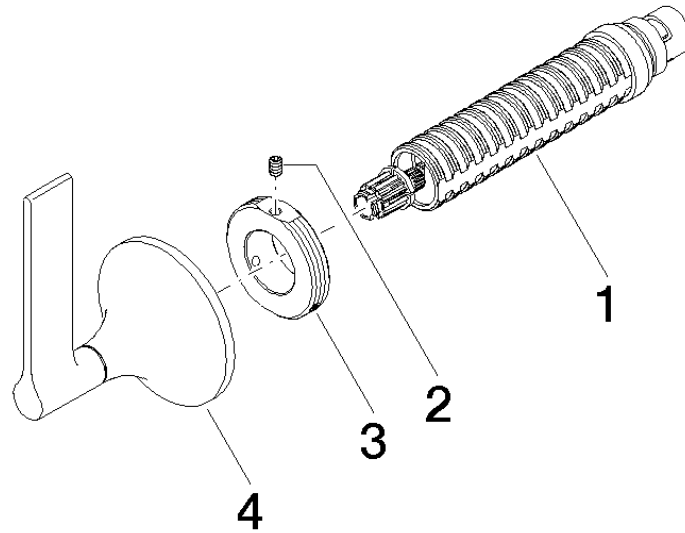


Certificates

DVGW_DW-6501DN0	WRAS_2010	LGA_29	DVGW_DW-6512DN0	WRAS_2011
-----------------	-----------	--------	-----------------	-----------

Codes & Standards			
ADA	ASME A112.18.1/CSA B125.1	DIN 4109	EN 1111
EN 200	ISO 3822	Scottish Water Byelaws	UK Water Supply Regulations
Ü-Zeichen			

Parts for other
finishes can be found
here: [Chrome](#)



Spare parts list