

# TARA ULTRA Single-lever mixer with rinsing spray set - Platinum

TARA ULTRA

ST 110 107 8875



- 241mm projection
- pivotable spout 360°
- air-enriched flow and spray flow
- automatic spout/shower diverter
- height of mixer 393 mm
- height up to aerator 240 mm
- single-lever mixer hole diameter 35 mm
- hole diameter rinsing spray 32mm
- 2 x pressure hose with 3/8" cap nut
- fabric braided hose 1500 mm
- sprayface with anti-scaling system
- max. flow 5.7 l/min at 3 bar flow pressure
- lead-free
- This product can help a building meet the requirements of Green Building Rating Systems, e.g. LEED®, BREEAM®, DGNB

	Platinum	ST 110 107 8875-08 0010
	Chrome	ST 110 107 8875-00 0010
	Brushed Platinum	ST 110 107 8875-06 0010
	Durabronze (23kt Gold)	ST 110 107 8875-09 0010
	Dark Chrome	ST 110 107 8875-19 0010
	Brushed Durabronze (23kt Gold)	ST 110 107 8875-28 0010
	Matte Black	ST 110 107 8875-33 0010
	Brushed Champagne (22kt Gold)	ST 110 107 8875-46 0010
	Champagne (22kt Gold)	ST 110 107 8875-47 0010
	Brushed Chrome	ST 110 107 8875-93 0010
	Brushed Dark Platinum	ST 110 107 8875-99 0010

## Individual components of this set

You need the following components for this set

1x 33 826 875-08 0010



1x 27 721 970-08



ST 110 107 8875



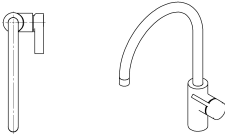
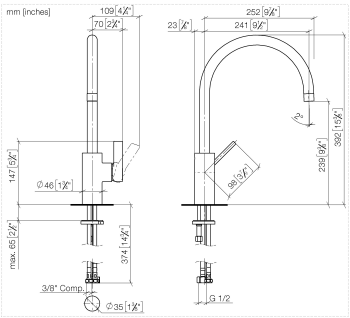
- 241 mm projection
- pivotable spout 360°
- air-enriched flow
- height of mixer 393 mm
- height up to aerator 240 mm
- single-lever mixer hole diameter 35 mm
- 2x US pressure hose, 3/8"
- max. flow 5.7 l/min at 3 bar flow pressure
- lead-free
- This product can help a building meet the requirements of Green Building Rating Systems, e.g. LEED®, BREEAM®, DGNB

Single-lever mixer for combining with rinsing/Profi spray only

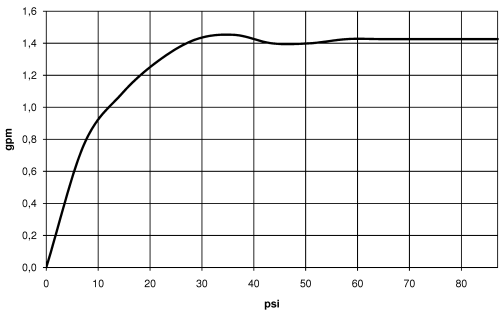
	Platinum	33 826 875-08 001
	Chrome	33 826 875-00 001
	Brushed Platinum	33 826 875-06 001
	Durabass (23kt Gold)	33 826 875-09 001
	Dark Chrome	33 826 875-19 001
	Brushed Durabass (23kt Gold)	33 826 875-28 001
	Matte Black	33 826 875-33 001
	Brushed Champagne (22kt Gold)	33 826 875-46 001
	Champagne (22kt Gold)	33 826 875-47 001
	Brushed Chrome	33 826 875-93 001
	Brushed Dark Platinum	33 826 875-99 001



ST 110 107 8875



Flow rate chart



Certificates

IAPMO\_4976      IAPMO\_6397      IAPMO\_N-4976

Codes & Standards

ADA	ASME A112.18.1	ASME A112.18.1/CSA B125.1	California Energy Commission (CEC)
cUPC	NSF/ANSI 372	NSF/ANSI/CAN 61	NSF372
NSF61			



ST 110 107 8875

Product version from 5/31/2010 to 7/25/2018

Product version from 7/25/2018 to 5/15/2020

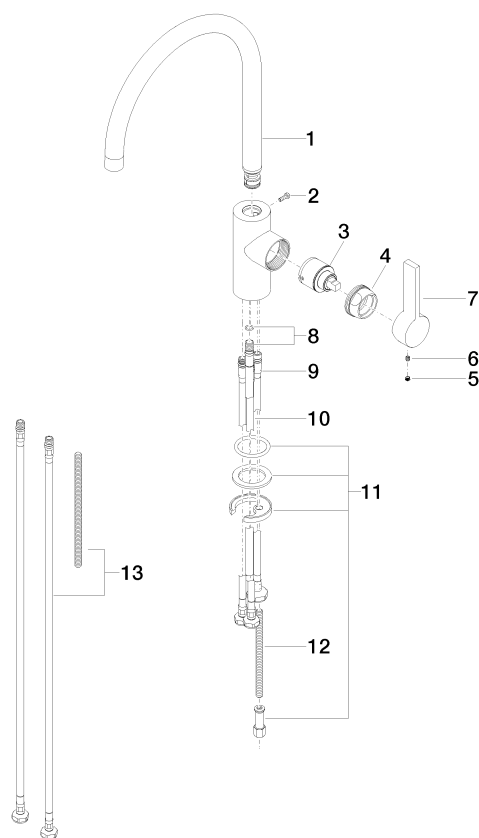
Product version from 5/15/2020 to 4/26/2021

Product version from 4/26/2021 to 5/3/2021

Product version from 5/3/2021

**Product version from 6/1/2022**

Parts for other  
finishes can be found  
here: [Chrome](#)



ST 110 107 8875

Spare parts list

- Product version from 5/31/2010 to 7/25/2018
- Product version from 7/25/2018 to 5/15/2020
- Product version from 5/15/2020 to 4/26/2021
- Product version from 4/26/2021 to 5/3/2021
- Product version from 5/3/2021

Product version from 6/1/2022

No.	Item Number	Name	Quantity used	Delivery time
	90 28 22 202 03-08	spout	14	40

# TARA ULTRA Single-lever mixer with rinsing spray set - Platinum

TARA ULTRA

ST 110 107 8875



Fits: ELIO, TARA, TARA ULTRA

- with round rosette
- spray flow
- automatic spout/shower diverter
- height of mixer 191 mm
- hole diameter rinsing spray 32mm
- fabric braided hose 1500 mm
- sprayface with anti-scaling system
- lead-free

Can only be combined with 33826790, 32800790, 33826888, 32815888, 20815892, 33826875.

Intrinsic protection against back flow.

Button has to be pressed while using.

	Platinum	27 721 970-0
	Chrome	27 721 970-0
	Brushed Platinum	27 721 970-0
	Durabrand (23kt Gold)	27 721 970-0
	Dark Chrome	27 721 970-1
	Brushed Durabrand (23kt Gold)	27 721 970-2
	Matte Black	27 721 970-3
	Brushed Champagne (22kt Gold)	27 721 970-4
	Champagne (22kt Gold)	27 721 970-4
	Brushed Chrome	27 721 970-9
	Brushed Dark Platinum	27 721 970-9



TARA ULTRA Single-lever mixer with rinsing spray set - Platinum

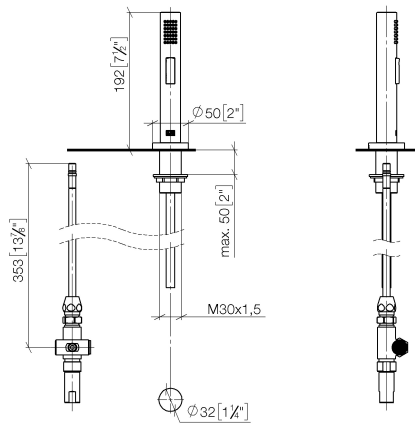
TARA ULTRA

ST 110 107 8875

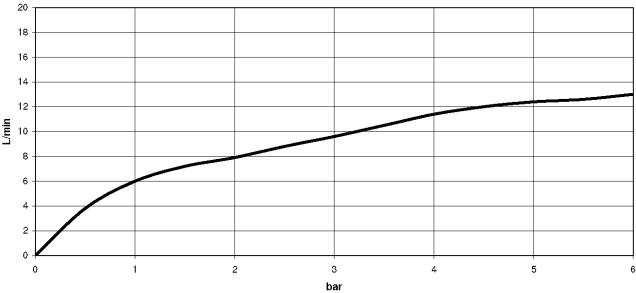
8  
—  
0  
—  
6  
—  
9  
—  
9  
—  
8  
—  
3  
—  
6  
—  
7  
—  
3  
—  
9  
—

ST 110 107 8875

mm [inches]



### Flow rate chart



### Certificates

LGA\_29

IAPMO\_N-4976

IAPMO\_6

LGA\_18

Belgaqua\_21-027-2

Codes & Standards

DIN 4109	EN 1717	ISO 3822	NSF372
NSF61	Ü-Zeichen		

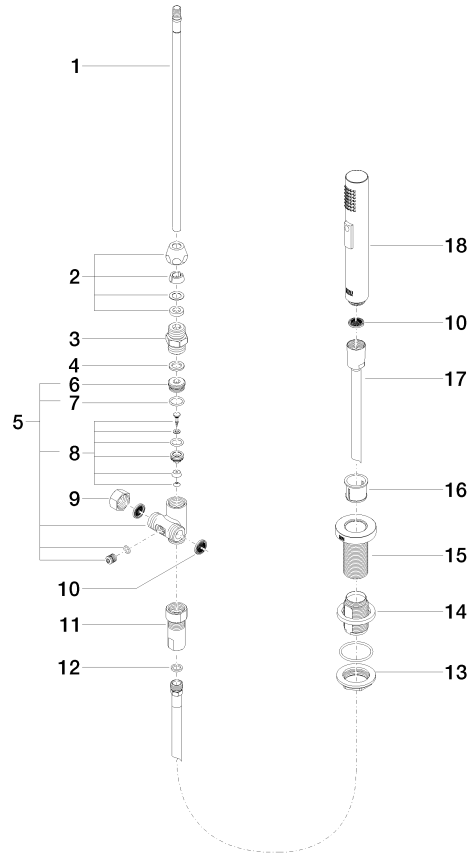


ST 110 107 8875

Product version up to 10/27/2020

**Product version from 10/27/2020**

Parts for other  
finishes can be found  
here: [Chrome](#)



ST 110 107 8875

Spare parts list

Product version up to 10/27/2020

**Product version from 10/27/2020**

No.	Item Number	Name	Quantity used	Delivery time
	04 24 02 046 01-07	pipe	19	10