




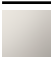







TARA ULTRA Single-lever mixer with rinsing spray set - Matte Black

TARA ULTRA

ST 110 107 8875



- 241mm projection
- pivotable spout 360°
- air-enriched flow and spray flow
- automatic spout/shower diverter
- height of mixer 393 mm
- height up to aerator 240 mm
- single-lever mixer hole diameter 35 mm
- hole diameter rinsing spray 32mm
- 2 x pressure hose with 3/8" cap nut
- fabric braided hose 1500 mm
- sprayface with anti-scaling system
- max. flow 5.7 l/min at 3 bar flow pressure
- lead-free
- This product can help a building meet the requirements of Green Building Rating Systems, e.g. LEED®, BREEAM®, DGNB

	Matte Black	ST 110 107 8875-33 0010
	Chrome	ST 110 107 8875-00 0010
	Brushed Platinum	ST 110 107 8875-06 0010
	Platinum	ST 110 107 8875-08 0010
	Durabrand (23kt Gold)	ST 110 107 8875-09 0010
	Dark Chrome	ST 110 107 8875-19 0010
	Brushed Durabrand (23kt Gold)	ST 110 107 8875-28 0010
	Brushed Champagne (22kt Gold)	ST 110 107 8875-46 0010
	Champagne (22kt Gold)	ST 110 107 8875-47 0010
	Brushed Chrome	ST 110 107 8875-93 0010
	Brushed Dark Platinum	ST 110 107 8875-99 0010

Individual components of this set

You need the following components for this set



1x 27 721 970-33



1x 33 826 875-33 0010

TARA ULTRA Single-lever mixer with rinsing spray set - Matte Black

TARA ULTRA

ST 110 107 8875



Fits: ELIO, TARA, TARA ULTRA

- with round rosette
- spray flow
- automatic spout/shower diverter
- height of mixer 191 mm
- hole diameter rinsing spray 32mm
- fabric braided hose 1500 mm
- sprayface with anti-scaling system
- lead-free

Can only be combined with 33826790, 32800790, 33826888, 32815888, 20815892, 33826875.

Intrinsic protection against back flow.

Button has to be pressed while using.

	Matte Black	27 721 970-3
	Chrome	27 721 970-0
	Brushed Platinum	27 721 970-0
	Platinum	27 721 970-0
	Durabrand (23kt Gold)	27 721 970-0
	Dark Chrome	27 721 970-1
	Brushed Durabrand (23kt Gold)	27 721 970-2
	Brushed Champagne (22kt Gold)	27 721 970-4
	Champagne (22kt Gold)	27 721 970-4
	Brushed Chrome	27 721 970-9
	Brushed Dark Platinum	27 721 970-9



TARA ULTRA Single-lever mixer with rinsing spray set - Matte Black

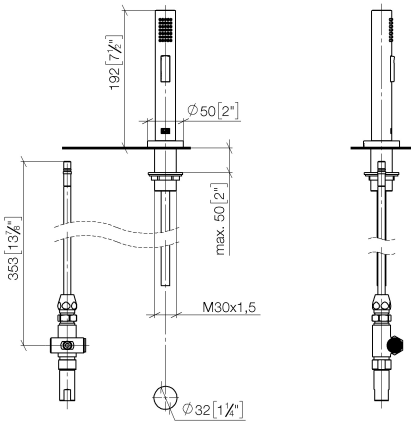
TARA ULTRA

ST 110 107 8875

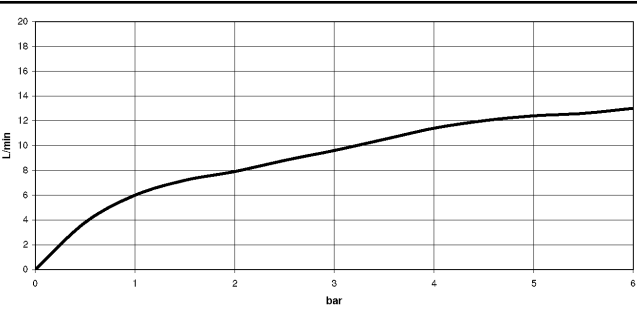
:3
—
0
—
6
—
8
—
9
—
9
—
8
—
6
—
7
—
3
—
9
—

ST 110 107 8875

mm [inches]



Flow rate chart



Certificates

LGA_29	IAPMO_N-4976	IAPMO_6	LGA_18	Belgaqua_21-027-2
--------	--------------	---------	--------	-------------------



Codes & Standards

DIN 4109

EN 1717

ISO 3822

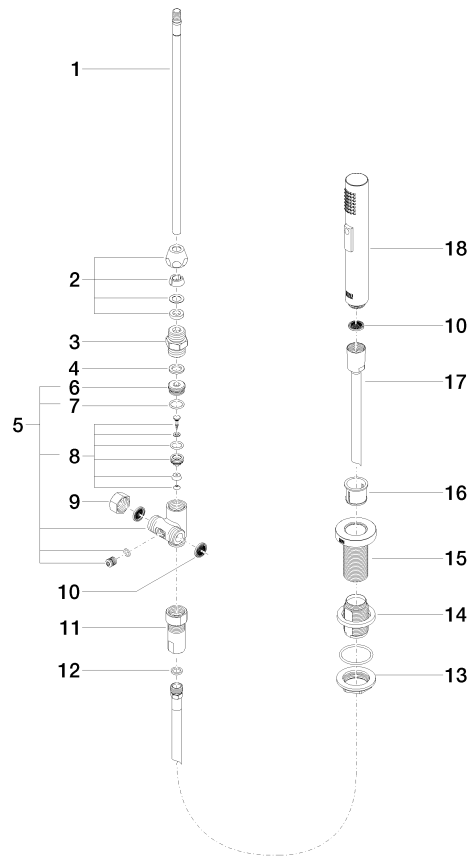
NSF372

NSF61

Ü-Zeichen

Product version from 10/27/2020

Parts for other
finishes can be found
here: [Chrome](#)





ST 110 107 8875

Spare parts list

Product version from 10/27/2020



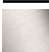







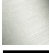
No.	Item Number	Name	Quantity used	Delivery time
	04 24 02 046 01-07	pipe	19	10

ST 110 107 8875

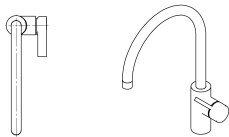
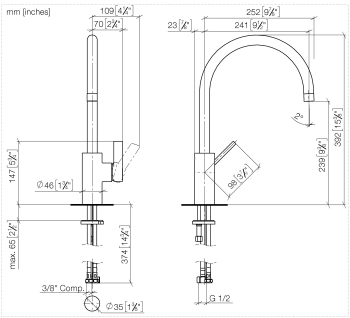


- 241mm projection
- pivotable spout 360°
- air-enriched flow
- height of mixer 393 mm
- height up to aerator 240 mm
- single-lever mixer hole diameter 35mm
- 2x US pressure hose, 3/8"
- max. flow 5.7 l/min at 3 bar flow pressure
- lead-free
- This product can help a building meet the requirements of Green Building Rating Systems, e.g. LEED®, BREEAM®, DGNB

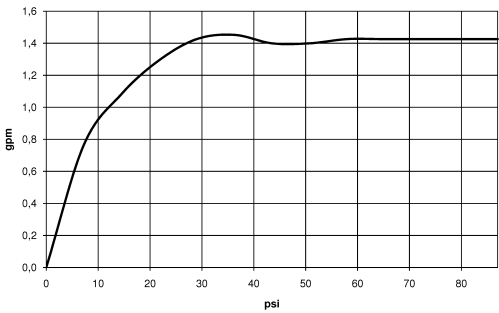
Single-lever mixer for combining with rinsing/Profi spray only

	Matte Black	33 826 875-33 001
	Chrome	33 826 875-00 001
	Brushed Platinum	33 826 875-06 001
	Platinum	33 826 875-08 001
	Durabronze (23kt Gold)	33 826 875-09 001
	Dark Chrome	33 826 875-19 001
	Brushed Durabronze (23kt Gold)	33 826 875-28 001
	Brushed Champagne (22kt Gold)	33 826 875-46 001
	Champagne (22kt Gold)	33 826 875-47 001
	Brushed Chrome	33 826 875-93 001
	Brushed Dark Platinum	33 826 875-99 001

ST 110 107 8875



Flow rate chart



Certificates

IAPMO_6397

IAPMO_N-4976

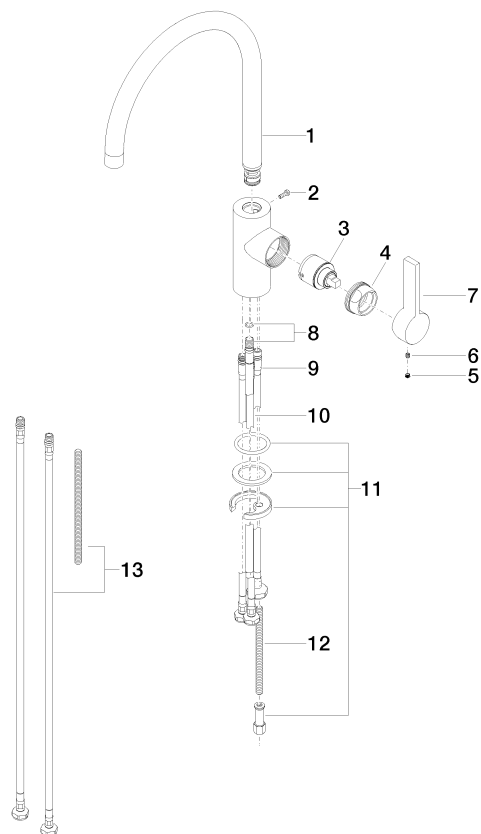


Codes & Standards

ADA	ASME A112.18.1/CSA B125.1	California Energy Commission (CEC)	NSF/ANSI 372
NSF/ANSI/CAN 61	NSF372	NSF61	

Product version from 6/1/2022

Parts for other
finishes can be found
here: [Chrome](#)





ST 110 107 8875

Spare parts list

Product version from 6/1/2022

No.	Item Number	Name	Quantity used	Delivery time
	90 28 22 202 03-33	spout	14	30