



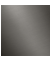


TARA Single-lever mixer with profi spray set - Chrome

ST 110 109 2888



- 235mm projection
- pivotable spout 360°
- air-enriched flow and spray flow
- height of mixer 400 mm
- test
- height up to aerator 230 mm
- single-lever mixer hole diameter 35 mm
- profi spray hole diameter 30mm
- 2 x pressure hose with 3/8" cap nut
- automatic spout/shower diverter
- sprayface with anti-scaling system
- max. flow 5.7 l/min at 3 bar flow pressure
- suspended spray with stainless steel spring (can be pivoted and locked)
- lead-free
- This product can help a building meet the requirements of Green Building Rating Systems, e.g. LEED®, BREEAM®, DGNB

	Chrome	ST 110 109 2888-00 0010
	Brushed Platinum	ST 110 109 2888-06 0010
	Platinum	ST 110 109 2888-08 0010
	Dark Chrome	ST 110 109 2888-19 0010
	Brushed Chrome	ST 110 109 2888-93 0010
	Brushed Dark Platinum	ST 110 109 2888-99 0010

Individual components of this set

You need the following components for this set



1x 27 789 970-00 0010



1x 33 826 888-00 0010

TARA Single-lever mixer with profi spray set - Chrome

ST 110 109 2888



Fits: ELIO, TARA, TARA ULTRA







- spray flow
- automatic diverter for spout/Profi spray set
- height of mixer 665 mm
- individual rosette diameter 55mm
- profi spray hole diameter 30mm
- sprayface with anti-scaling system
- suspended spray with stainless steel spring (can be pivoted and locked)
- lead-free

The profi spray can be installed either with or without a rosette

Can only be combined with 32800790, 33826888, 32815888, 20815892, 33826875.

Intrinsic protection against back flow.

Button has to be pressed while using.

	Chrome	27 789 970-00 001
	Brushed Platinum	27 789 970-06 001
	Platinum	27 789 970-08 001
	Dark Chrome	27 789 970-19 001
	Brushed Chrome	27 789 970-93 001
	Brushed Dark Platinum	27 789 970-99 001



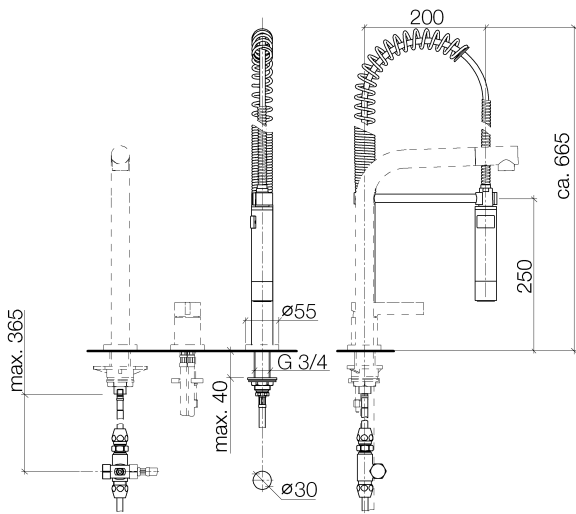
TARA Single-lever mixer with profi spray set - Chrome

ST 110 109 2888

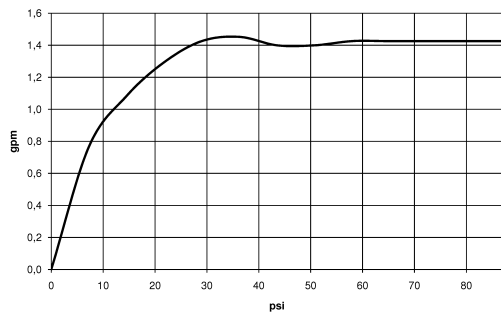
0
—
0
—
0
—
0
—
0
—
0
—

TARA Single-lever mixer with profi spray set - Chrome

ST 110 109 2888



Flow rate chart



Certificates

IAPMO_6



TARA Single-lever mixer with profi spray set - Chrome

ST 110 109 2888

Codes & Standards

NSF/ANSI 372	NSF372
--------------	--------



TARA Single-lever mixer with profi spray set - Chrome

ST 110 109 2888

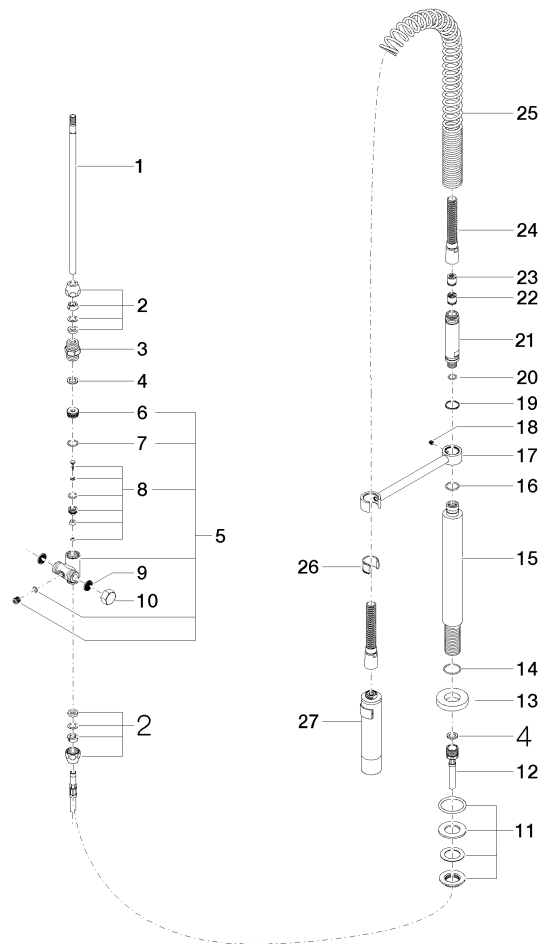
TARA Single-lever mixer with profi spray set - Chrome

ST 110 109 2888

Product version up to 5/15/2020

Product version from 9/18/2018 to 5/15/2020

Product version from 5/15/2020 to 10/27/2020





TARA Single-lever mixer with profi spray set - Chrome

ST 110 109 2888

Spare parts list

Product version up to 5/15/2020

Product version from 9/18/2018 to 5/15/2020

Product version from 5/15/2020 to 10/27/2020

No.	Item Number	Name	Quantity used	Delivery time
	04 24 02 046 01-07	pipe	28	10

TARA Single-lever mixer with profi spray set - Chrome

ST 110 109 2888

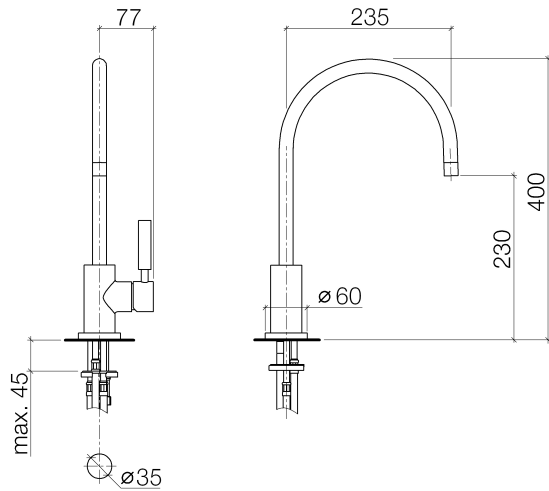


- 235mm projection
 - pivotable spout 360°
 - air-enriched flow
 - height of mixer 400 mm
 - height up to aerator 230 mm
 - single-lever mixer hole diameter 35mm
 - 2x US pressure hose, 3/8"
 - max. flow 5.7 l/min at 3 bar flow pressure
 - lead-free
 - This product can help a building meet the requirements of Green Building Rating Systems, e.g. LEED®, BREEAM®, DGNB
- Single-lever mixer for combining with rinsing/Profi spray only

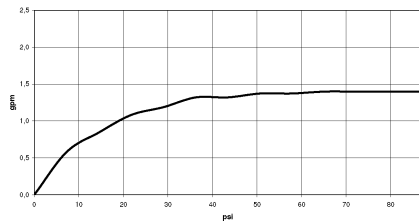
	Chrome	33 826 888-00 001
	Brushed Platinum	33 826 888-06 001
	Platinum	33 826 888-08 001
	Durabrand (23kt Gold)	33 826 888-09 001
	Dark Chrome	33 826 888-19 001
	Brushed Durabrand (23kt Gold)	33 826 888-28 001
	Matte Black	33 826 888-33 001
	Brushed Champagne (22kt Gold)	33 826 888-46 001
	Champagne (22kt Gold)	33 826 888-47 001
	Brushed Chrome	33 826 888-93 001
	Brushed Dark Platinum	33 826 888-99 001

TARA Single-lever mixer with profi spray set - Chrome

ST 110 109 2888



Flow rate chart



Certificates

IAPMO_4976 IAPMO_6397 IAPMO_N-4976

TARA Single-lever mixer with profi spray set - Chrome

ST 110 109 2888

Codes & Standards

ADA	ASME A112.18.1	ASME A112.18.1/CSA B125.1	California Energy Commission (CEC)
cUPC	NSF/ANSI 372	NSF/ANSI/CAN 61	NSF372
NSF61			



TARA Single-lever mixer with profi spray set - Chrome

ST 110 109 2888

TARA Single-lever mixer with profi spray set - Chrome

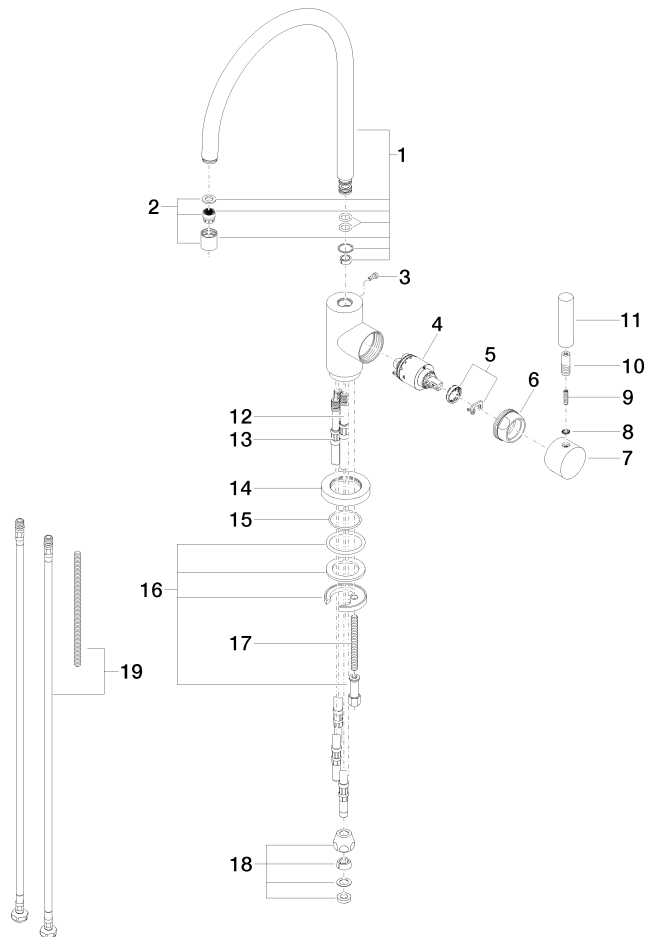
ST 110 109 2888

Product version up to 5/31/2010

Product version from 5/31/2010 to 4/26/2021

Product version from 4/26/2021 to 9/7/2021

Product version from 9/1/2021





TARA Single-lever mixer with profi spray set - Chrome

ST 110 109 2888

Spare parts list

Product version up to 5/31/2010

Product version from 5/31/2010 to 4/26/2021

Product version from 4/26/2021 to 9/7/2021

Product version from 9/1/2021

No.	Item Number	Name	Quantity used	Delivery time
	90 28 22 049 03-00	spout	20	10