







TARA Single-lever mixer with profi spray set - Brushed Platinum

ST 110 109 2888



- 235mm projection
- pivotable spout 360°
- air-enriched flow and spray flow
- height of mixer 400 mm
- test
- height up to aerator 230 mm
- single-lever mixer hole diameter 35 mm
- profi spray hole diameter 30mm
- 2 x pressure hose with 3/8" cap nut
- automatic spout/shower diverter
- sprayface with anti-scaling system
- max. flow 5.7 l/min at 3 bar flow pressure
- suspended spray with stainless steel spring (can be pivoted and locked)
- lead-free
- This product can help a building meet the requirements of Green Building Rating Systems, e.g. LEED®, BREEAM®, DGNB

	Brushed Platinum	ST 110 109 2888-06 0010
	Chrome	ST 110 109 2888-00 0010
	Platinum	ST 110 109 2888-08 0010
	Dark Chrome	ST 110 109 2888-19 0010
	Brushed Chrome	ST 110 109 2888-93 0010
	Brushed Dark Platinum	ST 110 109 2888-99 0010

Individual components of this set

You need the following components for this set



1x 27 789 970-06 0010



1x 33 826 888-06 0010

# TARA Single-lever mixer with profi spray set - Brushed Platinum

ST 110 109 2888



Fits: ELIO, TARA, TARA ULTRA







- spray flow
- automatic diverter for spout/Profi spray set
- height of mixer 665 mm
- individual rosette diameter 55mm
- profi spray hole diameter 30mm
- sprayface with anti-scaling system
- suspended spray with stainless steel spring (can be pivoted and locked)
- lead-free

The profi spray can be installed either with or without a rosette

Can only be combined with 32800790, 33826888, 32815888, 20815892, 33826875.

Intrinsic protection against back flow.

Button has to be pressed while using.

	Brushed Platinum	27 789 970-06 001
	Chrome	27 789 970-00 001
	Platinum	27 789 970-08 001
	Dark Chrome	27 789 970-19 001
	Brushed Chrome	27 789 970-93 001
	Brushed Dark Platinum	27 789 970-99 001



TARA Single-lever mixer with profi spray set - Brushed Platinum

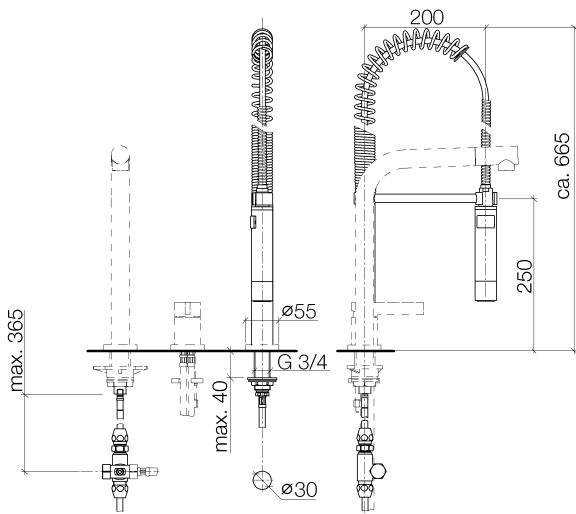
---

ST 110 109 2888

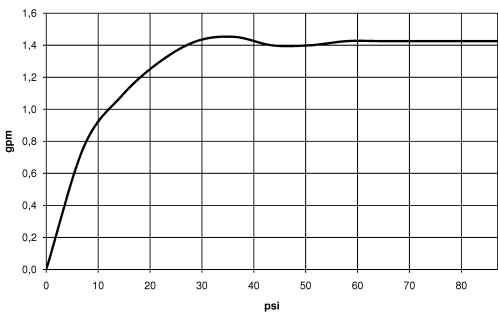
0  
—  
0  
—  
0  
—  
0  
—  
0  
—  
0  
—

# TARA Single-lever mixer with profi spray set - Brushed Platinum

ST 110 109 2888



## Flow rate chart



## Certificates

IAPMO\_6



# TARA Single-lever mixer with profi spray set - Brushed Platinum

---

ST 110 109 2888

## Codes & Standards

---

NSF/ANSI 372	NSF372
--------------	--------



## TARA Single-lever mixer with profi spray set - Brushed Platinum

---

ST 110 109 2888

## TARA Single-lever mixer with profi spray set - Brushed Platinum

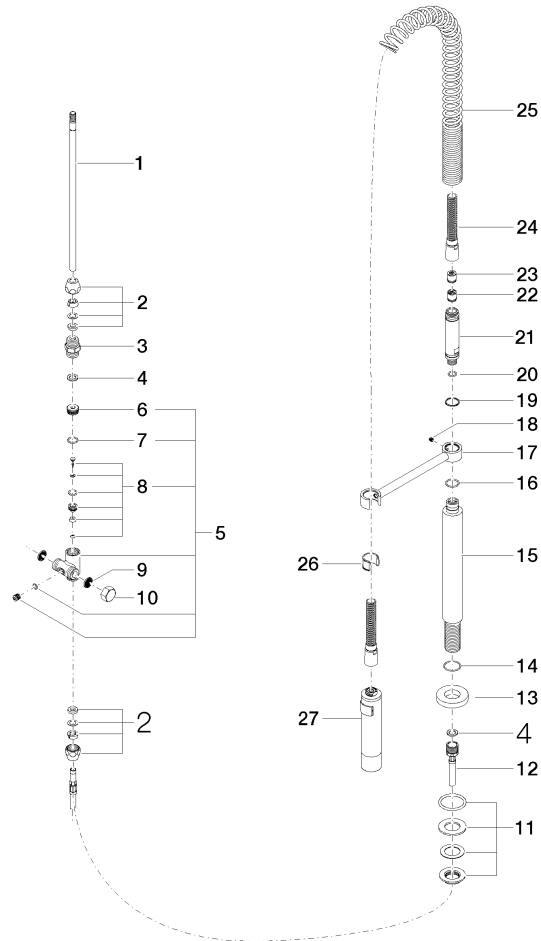
ST 110 109 2888

Product version up to 5/15/2020

Product version from 9/18/2018 to 5/15/2020

**Product version from 5/15/2020 to 10/27/2020**

Parts for other  
finishes can be found  
here: [Chrome](#)





TARA Single-lever mixer with profi spray set - Brushed Platinum

ST 110 109 2888

Spare parts list

Product version up to 5/15/2020

Product version from 9/18/2018 to 5/15/2020

**Product version from 5/15/2020 to 10/27/2020**

No.	Item Number	Name	Quantity used	Delivery time
	04 24 02 046 01-07	pipe	28	10



# TARA Single-lever mixer with profi spray set - Brushed Platinum

ST 110 109 2888



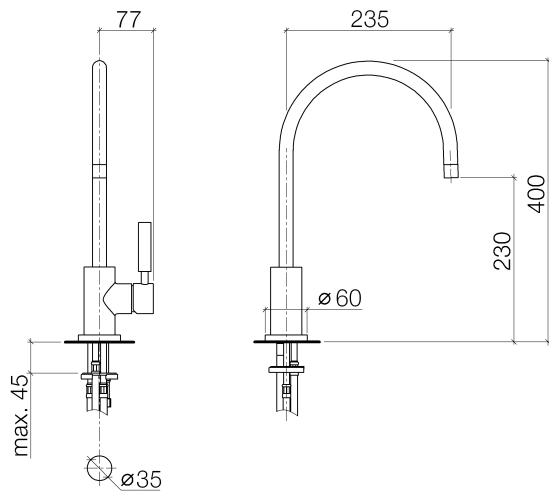
- 235mm projection
  - pivotable spout 360°
  - air-enriched flow
  - height of mixer 400 mm
  - height up to aerator 230 mm
  - single-lever mixer hole diameter 35mm
  - 2x US pressure hose, 3/8"
  - max. flow 5.7 l/min at 3 bar flow pressure
  - lead-free
  - This product can help a building meet the requirements of Green Building Rating Systems, e.g. LEED®, BREEAM®, DGNB
- Single-lever mixer for combining with rinsing/Profi spray only

	Brushed Platinum	33 826 888-06 001
	Chrome	33 826 888-00 001
	Platinum	33 826 888-08 001
	Durabrand (23kt Gold)	33 826 888-09 001
	Dark Chrome	33 826 888-19 001
	Brushed Durabrand (23kt Gold)	33 826 888-28 001
	Matte Black	33 826 888-33 001
	Brushed Champagne (22kt Gold)	33 826 888-46 001
	Champagne (22kt Gold)	33 826 888-47 001
	Brushed Chrome	33 826 888-93 001
	Brushed Dark Platinum	33 826 888-99 001

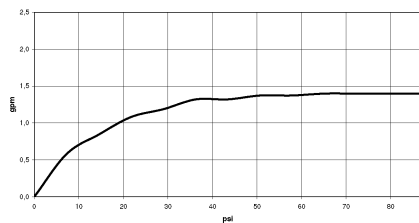


**TARA Single-lever mixer with profi spray set - Brushed Platinum**

ST 110 109 2888



**Flow rate chart**



**Certificates**

IAPMO\_4976      IAPMO\_6397      IAPMO\_N-4976

TARA Single-lever mixer with profi spray set - Brushed Platinum

ST 110 109 2888

Codes & Standards

ADA	ASME A112.18.1	ASME A112.18.1/CSA B125.1	California Energy Commission (CEC)
cUPC	NSF/ANSI 372	NSF/ANSI/CAN 61	NSF372
NSF61			



## TARA Single-lever mixer with profi spray set - Brushed Platinum

---

ST 110 109 2888

## TARA Single-lever mixer with profi spray set - Brushed Platinum

ST 110 109 2888

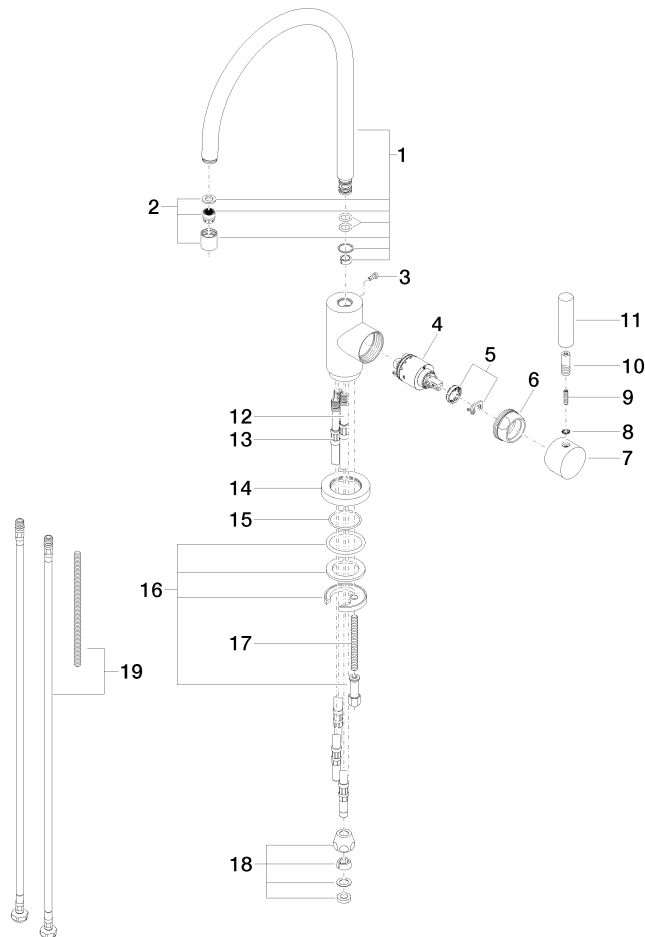
Product version up to 5/31/2010

Product version from 5/31/2010 to 4/26/2021

Product version from 4/26/2021 to 9/7/2021

**Product version from 9/1/2021**

Parts for other finishes can be found here: [Chrome](#)





TARA Single-lever mixer with profi spray set - Brushed Platinum

ST 110 109 2888

Spare parts list

Product version up to 5/31/2010

Product version from 5/31/2010 to 4/26/2021

Product version from 4/26/2021 to 9/7/2021

Product version from 9/1/2021

No.	Item Number	Name	Quantity used	Delivery time
	90 28 22 049 03-06	spout	20	10