

TARA Three-hole mixer with profi spray set - Dark Chrome

TARA

ST 110 201 6892



- 235mm projection
- pivotable spout 360°
- air-enriched flow and spray flow
- height of mixer 370 mm
- test
- height up to aerator 212 mm
- hole diameter spout 35 mm
- hole diameter valve 32 mm
- profi spray hole diameter 30mm
- automatic spout/shower diverter
- sprayface with anti-scaling system
- max. flow 5.7 l/min at 3 bar flow pressure
- suspended spray with stainless steel spring (can be pivoted and locked)
- lead-free
- This product can help a building meet the requirements of Green Building Rating Systems, e.g. LEED®, BREEAM®, DGNB

	Dark Chrome	ST 110 201 6892-19 0010
	Chrome	ST 110 201 6892-00 0010
	Brushed Platinum	ST 110 201 6892-06 0010
	Platinum	ST 110 201 6892-08 0010
	Brushed Chrome	ST 110 201 6892-93 0010
	Brushed Dark Platinum	ST 110 201 6892-99 0010

Individual components of this set

You need the following components for this set



1x 20 815 892-19 0010



1x 27 789 970-19 0010

TARA Three-hole mixer with profi spray set - Dark Chrome

TARA

ST 110 201 6892

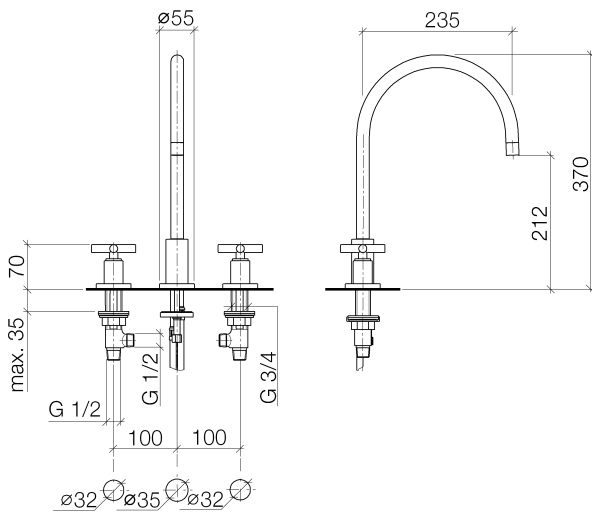


- 235mm projection
- pivotable spout 360°
- air-enriched flow
- height of mixer 370 mm
- height up to aerator 212 mm
- hole diameter spout 35 mm
- hole diameter valve 32 mm
- max. flow 5.7 l/min at 3 bar flow pressure
- lead-free
- This product can help a building meet the requirements of Green Building Rating Systems, e.g. LEED®, BREEAM®, DGNB

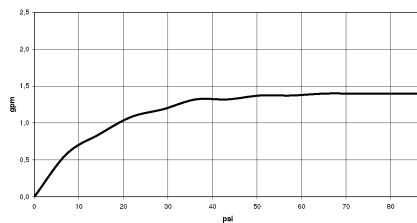
	Dark Chrome	20 815 892-19 001
	Chrome	20 815 892-00 001
	Brushed Platinum	20 815 892-06 001
	Platinum	20 815 892-08 001
	Durabronze (23kt Gold)	20 815 892-09 001
	Brushed Durabronze (23kt Gold)	20 815 892-28 001
	Matte Black	20 815 892-33 001
	Brushed Champagne (22kt Gold)	20 815 892-46 001
	Champagne (22kt Gold)	20 815 892-47 001
	Brushed Chrome	20 815 892-93 001
	Brushed Dark Platinum	20 815 892-99 001



ST 110 201 6892



### Flow rate chart



### Certificates

IAPMO\_N-4

IAPMO\_6



TARA Three-hole mixer with profi spray set - Dark Chrome

TARA

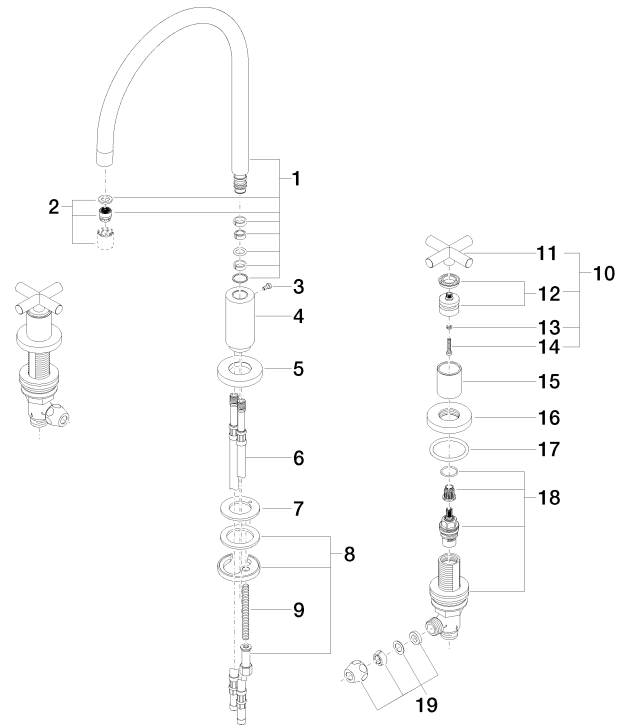
ST 110 201 6892

Codes & Standards

ADA	ASME A112.18.1/CSA B125.1	California Energy Commission (CEC)	NSF/ANSI 372
NSF/ANSI/CAN 61	NSF372	NSF61	



Parts for other  
finishes can be found  
here: [Chrome](#)



**Spare parts list**



Fits: ELIO, TARA, TARA ULTRA



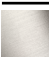


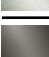
- spray flow
- automatic diverter for spout/Profi spray set
- height of mixer 665 mm
- individual rosette diameter 55mm
- profi spray hole diameter 30mm
- sprayface with anti-scaling system
- suspended spray with stainless steel spring (can be pivoted and locked)
- lead-free

The profi spray can be installed either with or without a rosette

Can only be combined with 32800790, 33826888, 32815888, 20815892, 33826875.

Intrinsic protection against back flow.

Button has to be pressed while using.

	Dark Chrome	27 789 970-19 001
	Chrome	27 789 970-00 001
	Brushed Platinum	27 789 970-06 001
	Platinum	27 789 970-08 001
	Brushed Chrome	27 789 970-93 001
	Brushed Dark Platinum	27 789 970-99 001





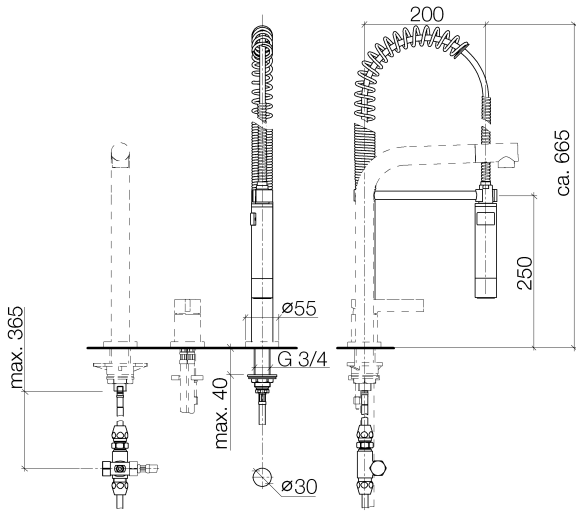
TARA Three-hole mixer with profi spray set - Dark Chrome

TARA

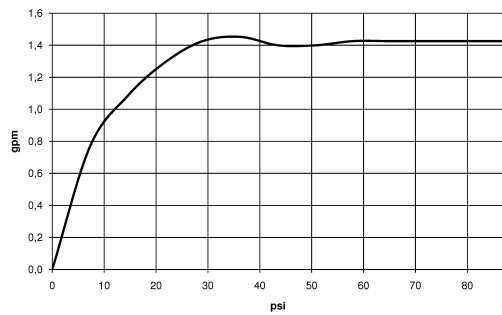
ST 110 201 6892

0  
—  
0  
—  
0  
—  
0  
—  
0  
—  
0  
—

ST 110 201 6892



### Flow rate chart



### Certificates

IAPMO\_6



TARA Three-hole mixer with profi spray set - Dark Chrome

TARA

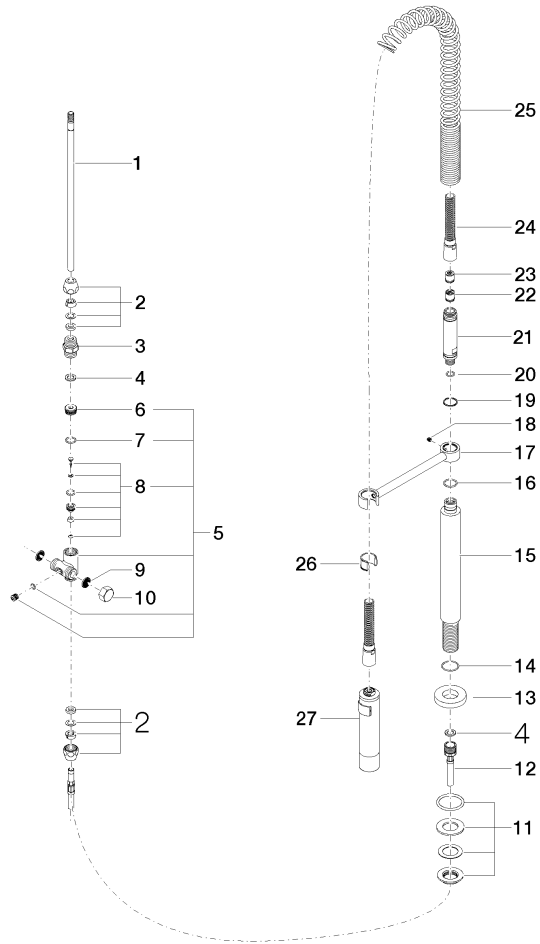
ST 110 201 6892

Codes & Standards

NSF/ANSI 372	NSF372
--------------	--------



Parts for other  
finishes can be found  
here: [Chrome](#)



## Spare parts list