

MEM Wall-mounted basin spout without pop-up waste - Chrome

MEM

13 800 782



- 200mm projection
 - fixed spout
 - rectangular, air-enriched flow
 - hole diameter 37 mm
 - rosette 60 x 60 mm
 - 1/2" connection
 - max. flow 4.5 l/min
 - lead-free
 - This product can help a building meet the requirements of Green Building Rating Systems, e.g. LEED®, BREEAM®, DGNB
- For Touchfree control please order eSet Touchfree WITH or WITHOUT temperature adjustment**

For Touchfree control please order eSet Touchfree WITH or WITHOUT temperature adjustment

	Chrome	13 800 782-00 0010
	Brushed Platinum	13 800 782-06 0010
	Platinum	13 800 782-08 0010
	Dark Chrome	13 800 782-19 0010
	Brushed Durabrass (23kt Gold)	13 800 782-28 0010
	Brushed Champagne (22kt Gold)	13 800 782-46 0010
	Champagne (22kt Gold)	13 800 782-47 0010
	Brushed Dark Platinum	13 800 782-99 0010

Required miscellaneous

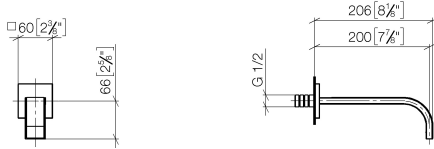
Concealed adapter -

35 080 970-90
0010

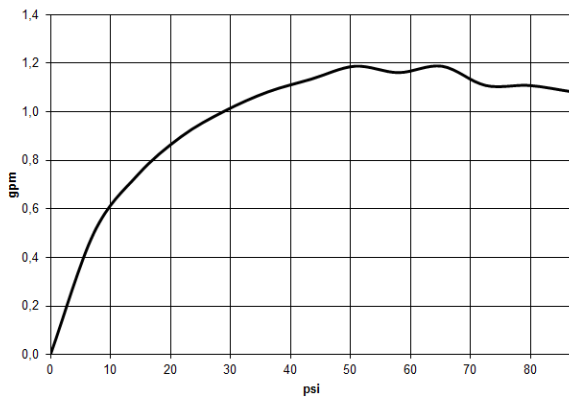


13 800 782

mm [inches]



Flow rate chart



Codes & Standards

ASME
A112.18.1/CSA
B125.1

California Energy
Commission
(CEC)

NSF/ANSI 372

NSF/ANSI/CAN
61



MEM Wall-mounted basin spout without pop-up waste - Chrome

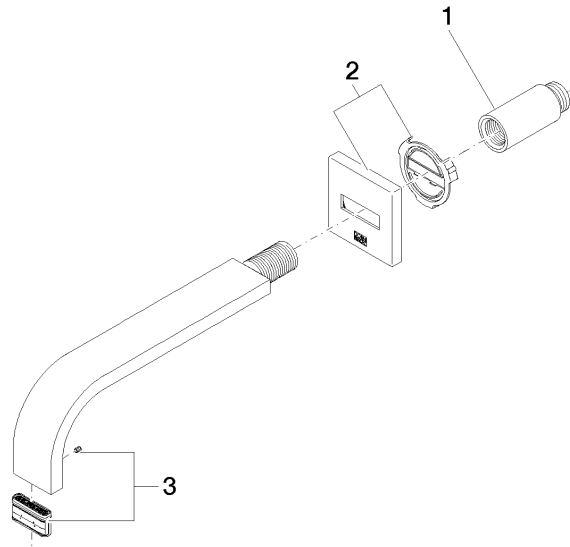
MEM

13 800 782

Certificates

IAPMO_N-4976 (2). IAPMO_6397.

13 800 782



Spare parts list

No.	Item Number	Name	Quantity used	Delivery time
1	09 24 03 081 10 90	extension	1	2
2	90 27 78 035 00-00	rosette	1	10
3	90 29 03 118 00 90	aerator	1	2