

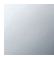






**CYO Wall-mounted basin spout without pop-up waste - Chrome**

CYO

13 800 811



- 160mm projection
- fixed spout
- rectangular, air-enriched flow
- hole diameter 37 mm
- 1/2" connection
- max. flow 4.5 l/min
- lead-free
- This product can help a building meet the requirements of Green Building Rating Systems, e.g. LEED®, BREEAM®, DGNB

	Chrome	13 800 811-00
	Brushed Platinum	13 800 811-06
	Dark Chrome	13 800 811-19
	Brushed Durabronze (23kt Gold)	13 800 811-28
	Platinum / Brushed Platinum	13 800 811-36
	Durabronze / Brushed Durabronze (23kt Gold)	13 800 811-38
	Brushed Dark Platinum	13 800 811-99

**Required miscellaneous**

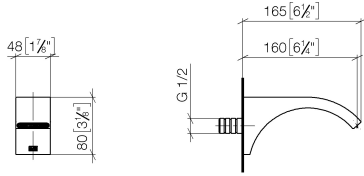
**Concealed adapter -**

35 080 970-90  
0010

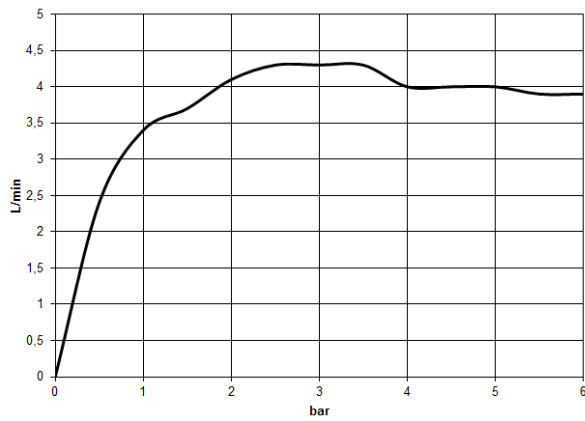


13 800 811

mm [inches]



Flow rate chart



Codes & Standards

California Energy  
Commission  
(CEC)

Water Sense





CYO Wall-mounted basin spout without pop-up waste - Chrome

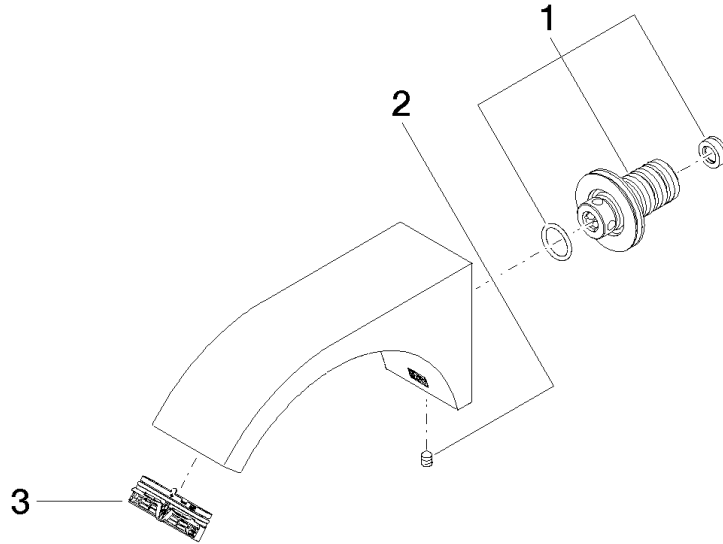
CYO

13 800 811

Certificates

LGA\_38116. IAPMO\_8834 (2). IAPMO\_N-4976. IAPMO\_4976 (6). IAPMO\_6397.

13 800 811



### Spare parts list

No.	Item Number	Name	Quantity used	Delivery time
1	90 24 03 108 01 90	nipple set	1	2
2	90 31 11 004 00 90	pin	1	2
3	90 29 03 121 00 90	aerator	1	2