

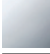
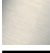

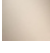


**CL.1 Bath spout for wall mounting - Chrome**

CL.1

13 801 705



- 205mm projection
- rectangular spray pattern with 55 individual jets
- hole diameter 37 mm
- 1/2" connection
- plug-link mounting
- max. flow 24.6 l/min at 3 bar flow pressure

	Chrome	13 801 705-00
	Brushed Platinum	13 801 705-06
	Dark Chrome	13 801 705-19
	Brushed Champagne (22kt Gold)	13 801 705-46
	Champagne (22kt Gold)	13 801 705-47
	Brushed Dark Platinum	13 801 705-99

**Required miscellaneous**

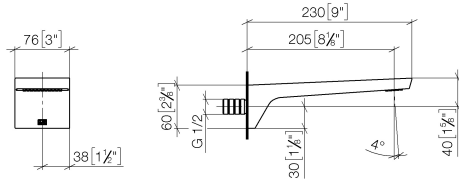
**Concealed adapter -**

35 080 970-90  
0010



13 801 705

mm [inches]



**Flow rate chart**



**Codes & Standards**

ASME  
A112.18.1/CSA  
B125.1



## CL.1 Bath spout for wall mounting - Chrome

---

CL.1

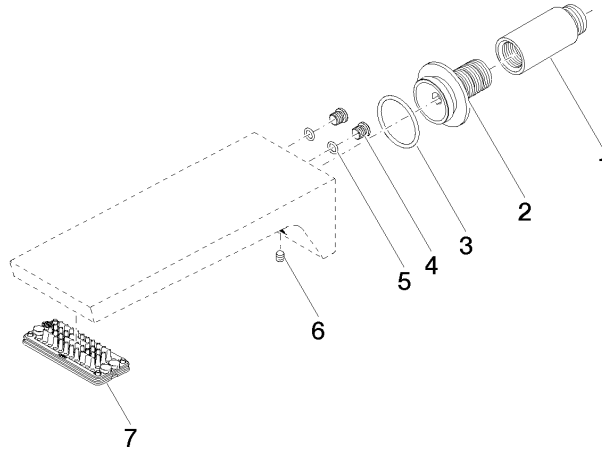
13 801 705

### Certificates

---

WRAS\_1512012.      LGA\_28683.      IAPMO\_4976 (6).

13 801 705



### Spare parts list

No.	Item Number	Name	Quantity used	Delivery time
1	09 24 03 081 10 90	extension	1	2
2	09 24 03 180 90	nipple	1	2
3	09 14 10 119 90	seal	1	2
4	09 31 20 027 10-00	plug	2	10
5	09 14 10 132 90	seal	2	2
6	90 31 11 004 00 90	pin	1	2
7	90 11 02 299 00 90	aerator	1	2