

MEM Bath spout for wall mounting - Chrome

MEM

13 801 782



- 220mm projection
- rectangular, air-enriched flow
- rosette 60 x 60 mm
- hole diameter 37 mm
- 1/2" connection
- max. flow 38.5 l/min at 3 bar flow pressure
- WRAS 2203039

	Chrome	13 801 782-00
	Brushed Platinum	13 801 782-06
	Platinum	13 801 782-08
	Dark Chrome	13 801 782-19
	Brushed Durabrass (23kt Gold)	13 801 782-28
	Brushed Champagne (22kt Gold)	13 801 782-46
	Champagne (22kt Gold)	13 801 782-47
	Brushed Dark Platinum	13 801 782-99

Required miscellaneous

Concealed adapter -

35 080 970-90
0010

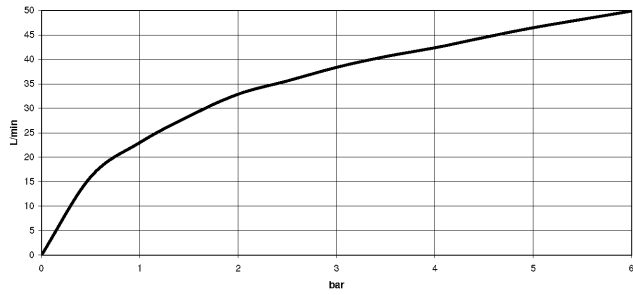


13 801 782

mm [inches]



Flow rate chart



Codes & Standards

- ASME
- A112.18.1/CSA
- B125.1



MEM Bath spout for wall mounting - Chrome

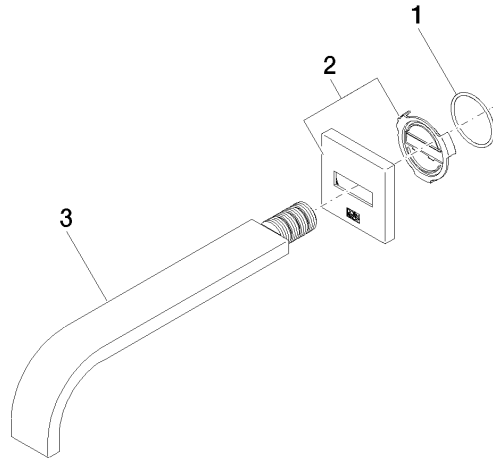
MEM

13 801 782

Certificates

WRAS_2203039. IAPMO_4976 (6).

13 801 782



Spare parts list

No.	Item Number	Name	Quantity used	Delivery time
1	09 14 10 111 90	seal	1	2
2	90 27 78 035 00-00	rosette	1	10
3	04 28 22 290 00-00	spout	1	10