

**VAIA Bath spout for wall mounting - Brushed Bronze**

VAIA

13 801 809



- 200mm projection
- circular normal flow
- hole diameter 37 mm
- rosette Ø 60 mm
- 1/2" connection
- max. flow 21.5 l/min at 3 bar flow pressure
- WRAS 2306002

	Brushed Bronze	13 801 809-42
	Chrome	13 801 809-00
	Brushed Platinum	13 801 809-06
	Platinum	13 801 809-08
	Dark Chrome	13 801 809-19
	Brushed Durabronze (23kt Gold)	13 801 809-28
	Brushed Champagne (22kt Gold)	13 801 809-46
	Champagne (22kt Gold)	13 801 809-47
	Brushed Dark Platinum	13 801 809-99

**Required miscellaneous**

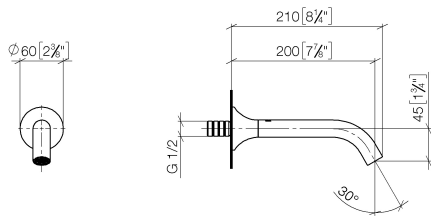
**Concealed adapter -**

35 080 970-90  
0010

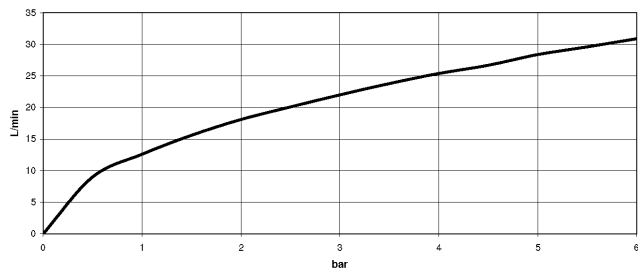


13 801 809

mm [inches]



### Flow rate chart



### Codes & Standards

ASME  
A112.18.1/CSA  
B125.1



## VAIA Bath spout for wall mounting - Brushed Bronze

---

VAIA

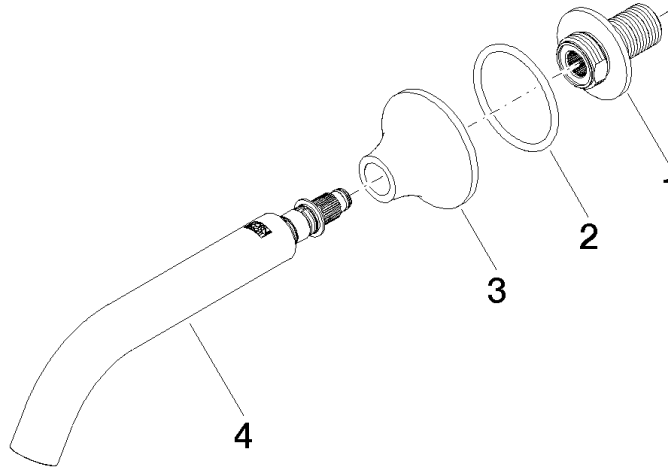
13 801 809

### Certificates

---

WRAS\_2306002.    LGA\_29290.

13 801 809



### Spare parts list

No.	Item Number	Name	Quantity used	Delivery time
1	09 24 03 269 90	nipple	1	2
2	09 14 10 084 90	seal	1	2
3	09 27 80 014-42	rosette	1	60
4	90 28 22 315 00-42	spout	1	30