

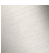





20 700 360



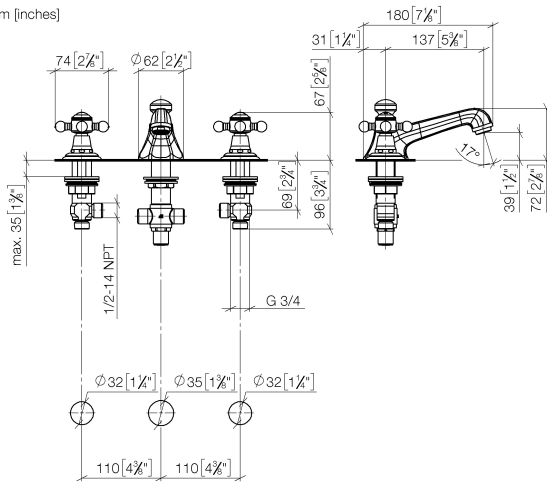
- 135mm projection
- 1 1/4" pop-up waste
- fixed spout
- circular, air-enriched flow
- height of mixer 72 mm
- height up to aerator 40 mm
- hole diameter valve 32 mm
- hole diameter spout 35 mm
- without rosette
- 2x 1/2" x 1/2" high pressure hose
- max. flow 4.5 l/min
- lead-free
- This product can help a building meet the requirements of Green Building Rating Systems, e.g. LEED®, BREEAM®, DGNB

Only suitable for basins with an overflow.

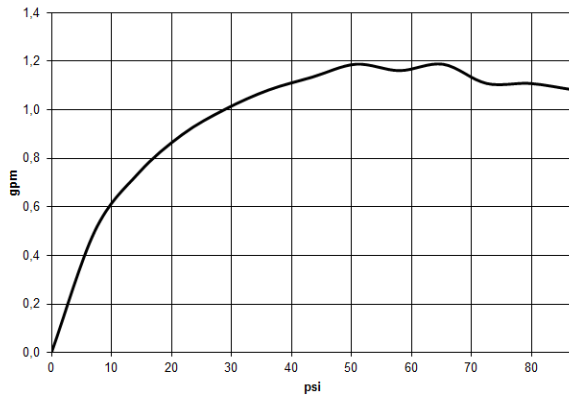
	Platinum	20 700 360-08 0010
	Chrome	20 700 360-00 0010
	Brushed Platinum	20 700 360-06 0010
	Durabress (23kt Gold)	20 700 360-09 0010
	Brushed Durabress (23kt Gold)	20 700 360-28 0010
	Brushed Dark Platinum	20 700 360-99 0010

20 700 360

mm [inches]



Flow rate chart



Codes & Standards

ADA	ASME A112.18.1	ASME A112.18.1/CSA B125.1	California Energy Commission (CEC)
cUPC	NSF/ANSI 372	NSF/ANSI/CAN 61	NSF372
NSF61			



MADISON Three-hole basin mixer with pop-up waste - Platinum

MADISON

20 700 360

Certificates

IAPMO_4976

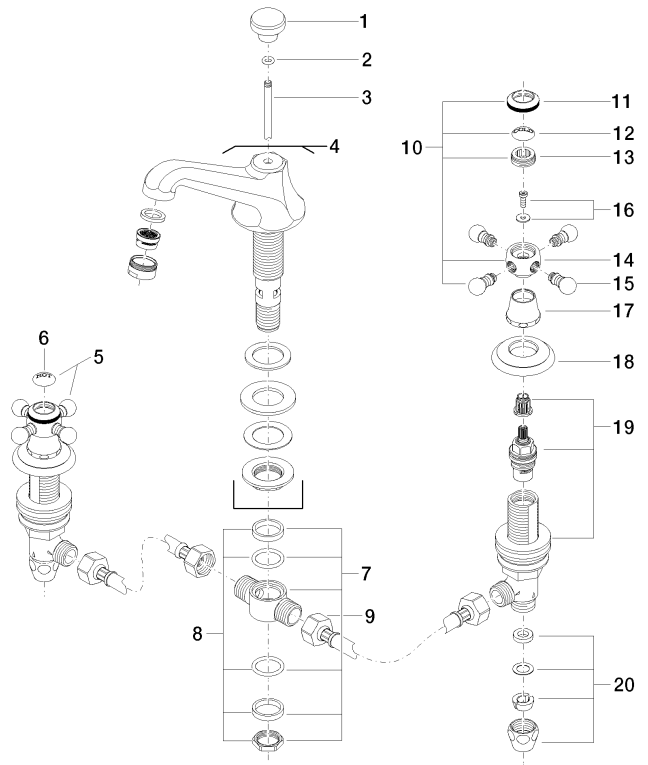
IAPMO_N-4

IAPMO_6

20 700 360

Product version from 7/31/2009

Parts for other finishes can be found here: [Chrome](#)



21 — Ablaugemittel 04.11.01.023.00.FF



Spare parts list

Product version from 7/31/2009