

25 100 892



- 240mm projection
- circular normal flow
- rotary diverter for bath/shower
- 3/8" shower outlet
- slide-on rosettes Ø 65 mm
- 1/2" connection
- gauge 150 mm - 15 mm
- max. flow 22 l/min at 3 bar flow pressure
- WRAS 2210004

Note: Local building codes may require the use of an anti-scald device. Please refer to remote pressure balance valve (35 910 970 90) Intrinsic protection against back flow.

Stand pipes combination possible on request (x-TRA SERVICE).

Note: Local building codes may require the use of an anti-scald device. Please refer to remote pressure balance valve (35 910 970 90)

Intrinsic protection against back flow.

Stand pipes combination possible on request (x-TRA SERVICE).

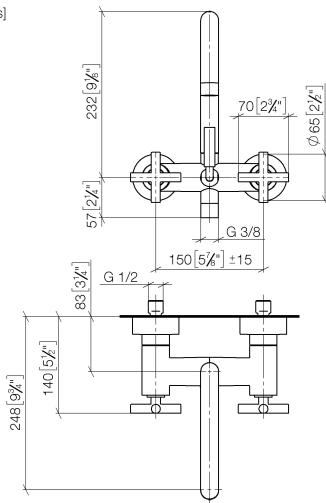
Required miscellaneous



Concealed adapter - 35 080 970-90
 •please order two adapters (USA only) 0010

25 100 892

mm [inches]



Flow rate chart



Codes & Standards

California Energy
Commission
(CEC)



TARA Bath mixer for wall mounting - Matte Black

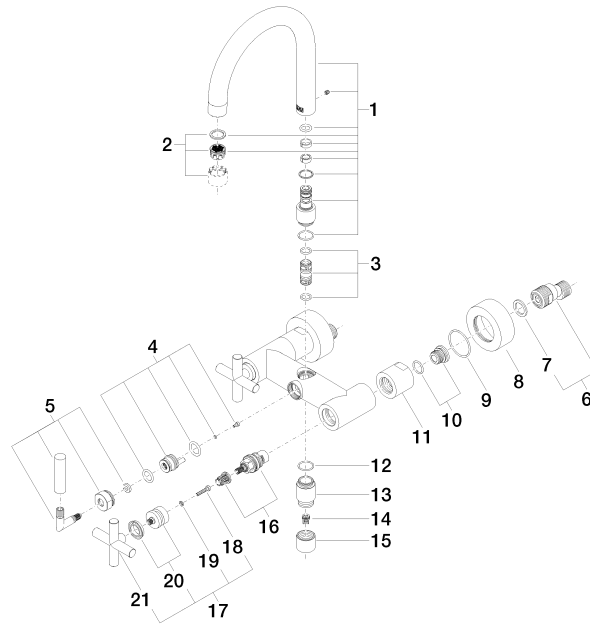
TARA

25 100 892

Certificates

WRAS_2210004. LGA_18933. Belgaqua_21-026-
27_4.

25 100 892





TARA Bath mixer for wall mounting - Matte Black

TARA

25 100 892

Spare parts list

No.	Item Number	Name	Quantity used	Delivery time
1	90 28 22 219 00-33	spout	1	-
Spare part can no longer be ordered, please order the replacement item				
2	90 23 01 024 00-33	aerator	1	-
Spare part can no longer be ordered, please order the replacement item				
3	90 21 10 011 00 90	diverter	1	2
4	90 15 01 005 00 90	insert	1	2
5	90 18 20 025 00-33	diverter	1	-
Spare part can no longer be ordered, please order the replacement item				
6	04 11 04 030 00 90	connection	2	2
7	09 14 20 010 90	seal	2	2
8	09 27 89 103-33	rosette	2	30
9	09 14 10 034 90	seal	2	2
10	04 29 05 014 00 90	nipple	2	2
11	09 23 10 064-33	nut	2	30
12	90 14 10 032 00 90	seal	1	2
13	09 24 03 121-33	nipple	1	30
14	09 23 01 131 90	back-flow preventer	1	2
15	09 21 02 143-33	sleeve	1	30
16	90 90 03 131 00 90	top	2	2
17	90 20 89 010 10-33	handle	2	30
18	90 30 30 075 00 90	screw	2	2
19	90 30 11 029 00 90	disc	2	2
20	90 12 12 007 00-33	base	2	30
21	09 20 89 010-33	handle	2	60