

**CL.1 Single-lever bath mixer with stand pipe for free-standing assembly with hand shower set - Dark Chrome**






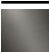
CL.1

25 863 705



- 238mm projection
- rectangular spray pattern with 55 individual jets
- max. spout flow rate 24.6 l/min
- Hand shower: COMPACT RAIN, max. flow rate 6.8 l/min (at 3 bar)
- bar-type hand shower with anti-scale system
- wall bracket
- automatic bath/shower diverter
- total height 935 - 1005 mm
- stand pipe height 598 - 668 mm
- height up to aerator 852 – 922 mm
- push-on rosette 131 x 131 mm
- metal shower hose 1250mm with integrated anti-twist protection

Note: Local building codes may require the use of an anti-scald device. Please refer to remote pressure balance valve (35 910 970 90)

	Dark Chrome	25 863 705-19
	Chrome	25 863 705-00
	Brushed Platinum	25 863 705-06
	Brushed Champagne (22kt Gold)	25 863 705-46
	Champagne (22kt Gold)	25 863 705-47
	Brushed Dark Platinum	25 863 705-99

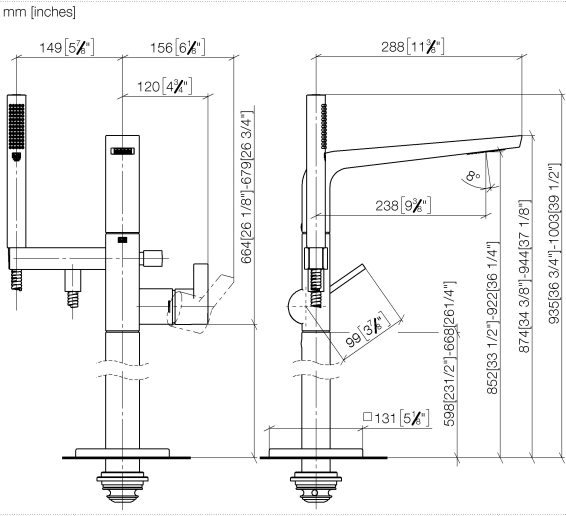


**CL.1 Single-lever bath mixer with stand pipe for free-standing assembly with hand shower set - Dark Chrome**

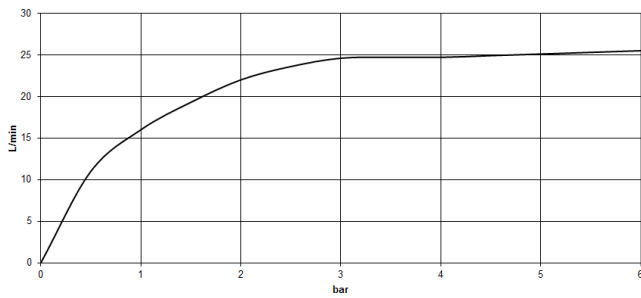
CL.1

25 863 705

mm [inches]



**Flow rate chart**



**Codes & Standards**

ASME  
A112.18.1/CSA  
B125.1

California Energy  
Commission  
(CEC)

EN 1717



CL.1 Single-lever bath mixer with stand pipe for free-standing assembly with  
hand shower set - Dark Chrome

---

CL.1

25 863 705

Certificates

---

Belgaqua\_24-003-2

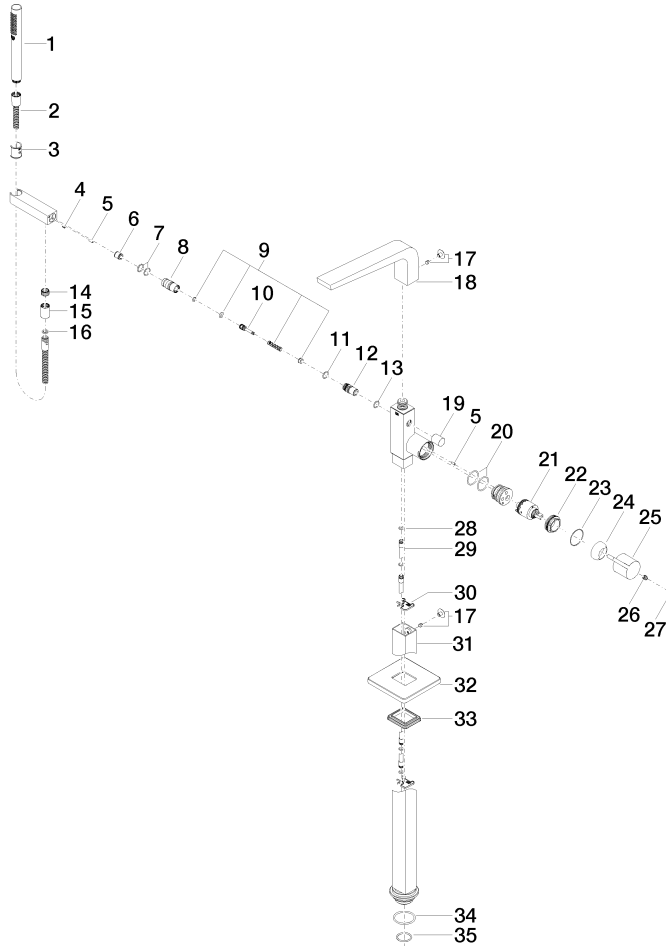
**CL.1 Single-lever bath mixer with stand pipe for free-standing assembly with hand shower set - Dark Chrome**

CL.1

25 863 705

**Product version from 7/1/2023**

Parts for other finishes can be found here: [Chrome](#)





CL.1 Single-lever bath mixer with stand pipe for free-standing assembly with hand shower set - Dark Chrome

CL.1

25 863 705

**Spare parts list**

**Product version from 7/1/2023**

No.	Item Number	Name	Quantity used	Delivery time
	90 12 11 140 30-19	shower	43	20