

**MADISON Bath shower set for bath rim or tile edge installation - Brushed Durabronz (23kt Gold)**

MADISON



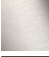


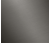
27 502 360



- spout: circular, air-enriched flow
- max. spout flow rate 23 l/min
- Hand shower: COMPACT RAIN, max. flow rate 6.8 l/min (at 3 bar)
- complete hand shower set with anti-scale system
- 225mm projection
- automatic bath/shower diverter
- height of mixer 185 mm
- height up to aerator 140 mm
- hole diameter valve 32 mm
- hole diameter spout 32 mm
- hole diameter for complete hand shower set 32 mm
- rosette for complete hand shower set Ø 55mm
- rosette for deck valve Ø 55mm
- metal shower hose 1750mm with integrated anti-twist protection

Intrinsic protection against back flow.

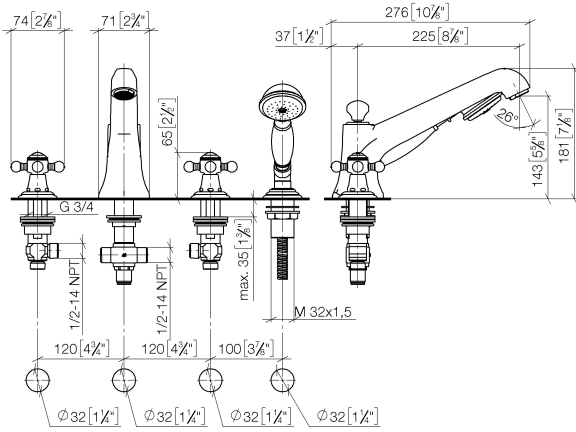
Note: Local building codes may require the use of an anti-scald device. Please refer to remote pressure balance valve (35 910 970 90)

	Brushed Durabronz (23kt Gold)	27 502 360-28
	Chrome	27 502 360-00
	Brushed Platinum	27 502 360-06
	Platinum	27 502 360-08
	Durabronz (23kt Gold)	27 502 360-09
	Brushed Dark Platinum	27 502 360-99

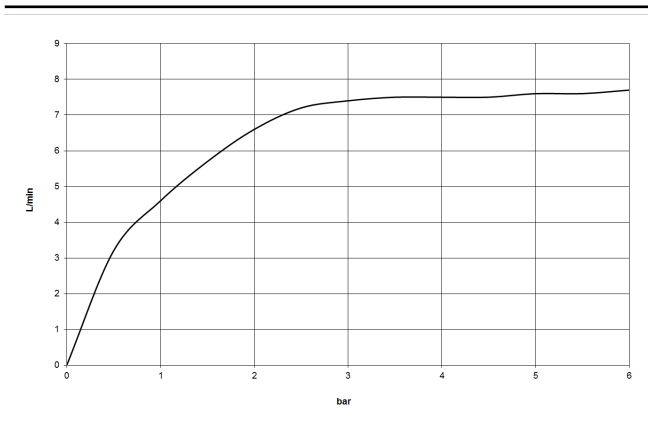
**MADISON Bath shower set for bath rim or tile edge installation - Brushed Durabronz (23kt Gold)**

MADISON

27 502 360  
mm [inches]



**Flow rate chart**



**Codes & Standards**

DIN 4109

EN 1717

ISO 3822

Ü-Zeichen



MADISON Bath shower set for bath rim or tile edge installation - Brushed  
Durabronz (23kt Gold)

---

MADISON

27 502 360

Certificates

---

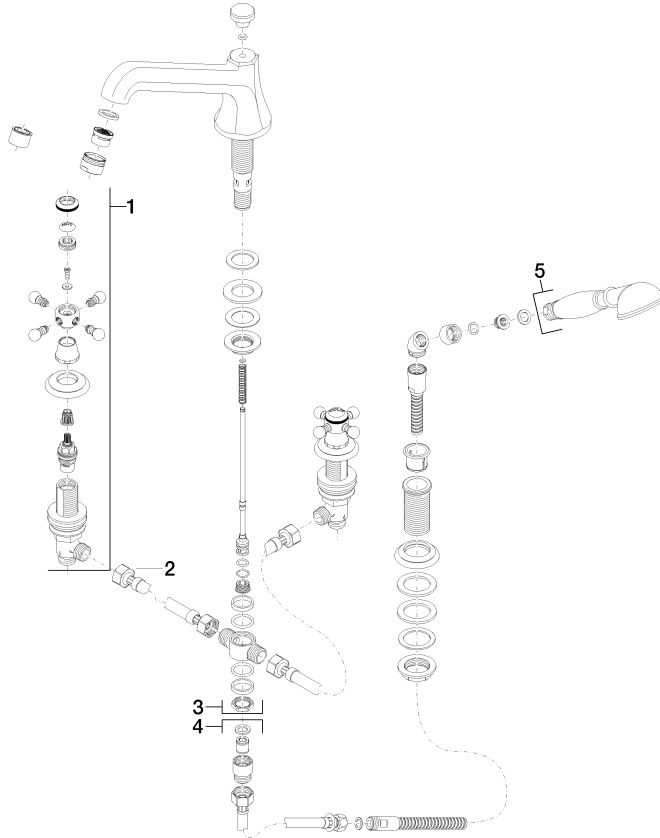
LGA\_8

Belgaqua\_21-380-2

27 502 360

**Product version from 7/31/2009**

Parts for other  
finishes can be found  
here: [Chrome](#)





MADISON Bath shower set for bath rim or tile edge installation - Brushed  
Durabronze (23kt Gold)

---

MADISON

27 502 360

## **Spare parts list**

**Product version from 7/31/2009**