

Profi spray set - Brushed Platinum

LOT

27 784 970




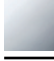



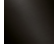
- spray flow
- automatic diverter for spout/Profi spray set
- height of mixer 665 mm
- individual rosette 55 x 55 mm
- profi spray hole diameter 30mm
- sprayface with anti-scaling system
- suspended spray with stainless steel spring (can be pivoted and locked)
- lead-free

The profi spray can be installed either with or without a rosette

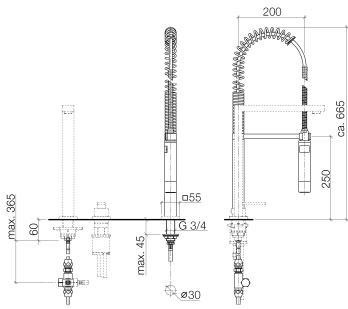
Can only be combined with 32800680, 32843680.

Intrinsic protection against back flow.

Button has to be pressed while using.

| | | |
|---|-----------------------|--------------------|
|  | Brushed Platinum | 27 784 970-06 0010 |
|  | Chrome | 27 784 970-00 0010 |
|  | Platinum | 27 784 970-08 0010 |
|  | Dark Chrome | 27 784 970-19 0010 |
|  | Brushed Chrome | 27 784 970-93 0010 |
|  | Brushed Dark Platinum | 27 784 970-99 0010 |

27 784 970



Flow rate chart



Codes & Standards

NSF/ANSI 372



Profi spray set - Brushed Platinum

LOT

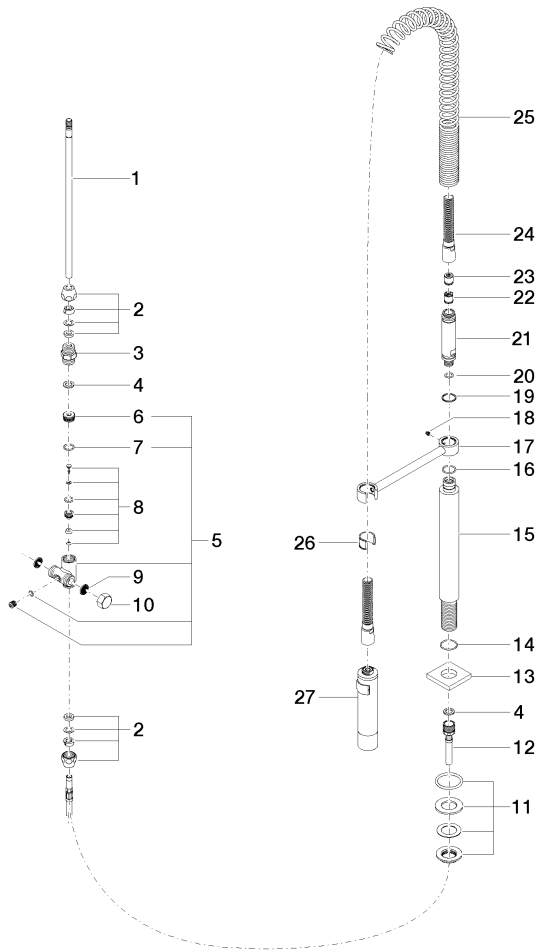
27 784 970

Certificates

IAPMO_6397.

27 784 970

Parts for other finishes can be found here: [Chrome](#)





Profi spray set - Brushed Platinum

LOT

27 784 970

Spare parts list

| No. | Item Number | Name | Quantity used | Delivery time |
|-----|--------------------|---------------------|---------------|---------------|
| 1 | 04 24 02 046 01-07 | pipe | 1 | 10 |
| 2 | 90 23 30 040 00-06 | threaded connector | 2 | 10 |
| 3 | 90 24 03 168 00 90 | nipple | 1 | 2 |
| 4 | 90 14 20 002 00 90 | seal | 2 | 2 |
| 5 | 90 17 09 046 10 90 | diverter | 1 | 2 |
| 6 | 09 24 04 112 10 90 | nipple | 1 | 2 |
| 7 | 90 14 10 033 00 90 | seal | 1 | 2 |
| 8 | 90 21 10 031 10 90 | diverter | 1 | 2 |
| 9 | 09 23 01 039 90 | sieve | 2 | 2 |
| 10 | 04 21 02 006 00 92 | cap | 1 | 2 |
| 11 | 04 23 10 004 03 90 | fixing set | 1 | 2 |
| 12 | 09 30 04 067 90 | hose | 1 | 2 |
| 13 | 09 27 97 033-06 | rosette | 1 | 10 |
| 14 | 09 14 10 120 90 | seal | 1 | 2 |
| 15 | 09 11 10 066 10-06 | connection | 1 | 10 |
| 16 | 09 14 10 031 90 | seal | 1 | 2 |
| 17 | 04 17 20 014 00-06 | holder | 1 | 10 |
| 18 | 09 31 11 049 90 | pin | 1 | 2 |
| 19 | 09 14 15 012 90 | ring | 1 | 2 |
| 20 | 09 14 10 003 90 | seal | 1 | 2 |
| 21 | 09 30 01 067 10-06 | adaptor | 1 | 10 |
| 22 | 90 23 01 141 00 90 | back-flow preventer | 1 | 2 |
| 23 | 09 23 01 046 90 | back-flow preventer | 1 | 2 |
| 24 | 90 30 02 065 00-06 | hose | 1 | 10 |
| 25 | 09 16 02 034 90 | spring | 1 | 2 |
| 26 | 90 18 40 035 00 90 | sleeve | 1 | 2 |
| 27 | 04 12 11 094 10-06 | shower | 1 | 10 |