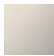







28 518 360



- spray head Ø 55mm
- ball-joint pivotable through 25° (in any direction)
- rain flow
- rosette Ø 55 mm
- 1/2" connection
- max. flow 5 l/min
- This product can help a building meet the requirements of Green Building Rating Systems, e.g. LEED®, BREEAM®, DGNB

| | | |
|---|-------------------------------|---------------|
|  | Platinum | 28 518 360-08 |
|  | Chrome | 28 518 360-00 |
|  | Brushed Platinum | 28 518 360-06 |
|  | Durabrace (23kt Gold) | 28 518 360-09 |
|  | Brushed Durabrace (23kt Gold) | 28 518 360-28 |
|  | Brushed Dark Platinum | 28 518 360-99 |

Required miscellaneous

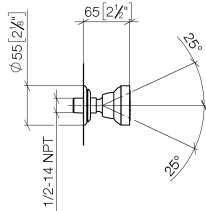
Concealed adapter -

35 080 970-90
0010

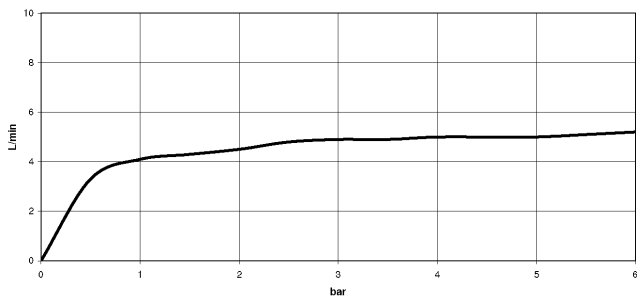


28 518 360

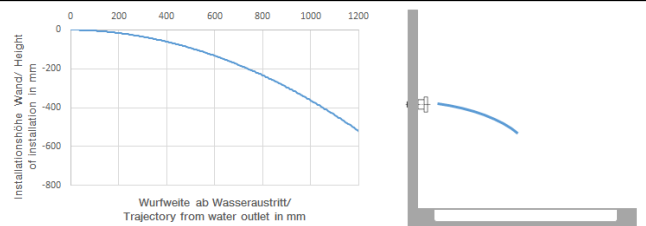
mm [inches]



Flow rate chart



Trajectory diagram



Codes & Standards

ASME
A112.18.1/CSA
B125.1

California Energy
Commission
(CEC)

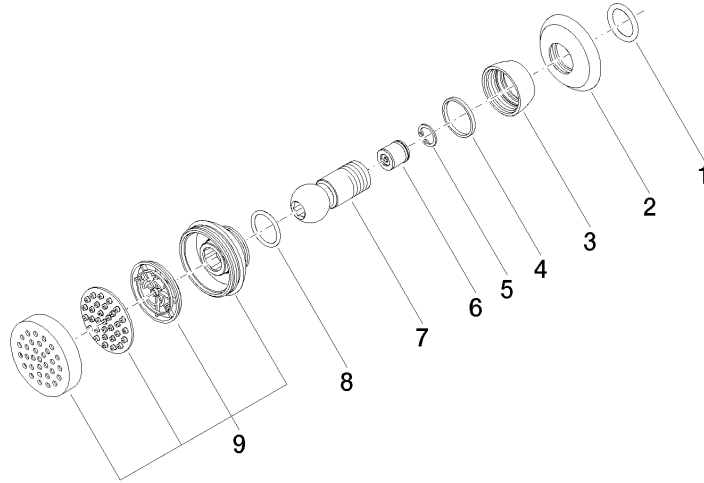


28 518 360

Certificates

LGA_38651.

28 518 360



Spare parts list

| No. | Item Number | Name | Quantity used | Delivery time |
|-----|--------------------|-----------------------|---------------|---------------|
| 1 | 90 14 10 026 00 90 | seal | 1 | 2 |
| 2 | 09 27 35 003-08 | rosette | 1 | 40 |
| 3 | 09 23 30 027-08 | nut | 1 | 60 |
| 4 | 09 14 15 010 90 | ring | 1 | 2 |
| 5 | 09 16 01 014 90 | ring | 1 | 2 |
| 6 | 09 23 01 048 90 | back-flow preventer | 1 | 2 |
| 7 | 09 21 40 016-08 | connection | 1 | 40 |
| 8 | 09 14 10 015 90 | seal | 1 | 2 |
| 9 | 90 12 05 028 00-08 | casing (completely) | 1 | 40 |