







**MADISON Body spray without volume control FlowReduce - Durabronss (23kt Gold)**

MADISON

28 518 360



- spray head Ø 55mm
- ball-joint pivotable through 25° (in any direction)
- rain flow
- rosette Ø 55 mm
- 1/2" connection
- max. flow 5 l/min
- This product can help a building meet the requirements of Green Building Rating Systems, e.g. LEED®, BREEAM®, DGNB

|   |                                |               |
|---|--------------------------------|---------------|
|  | Durabronss (23kt Gold)         | 28 518 360-09 |
|  | Chrome                         | 28 518 360-00 |
|  | Brushed Platinum               | 28 518 360-06 |
|  | Platinum                       | 28 518 360-08 |
|  | Brushed Durabronss (23kt Gold) | 28 518 360-28 |
|  | Brushed Dark Platinum          | 28 518 360-99 |

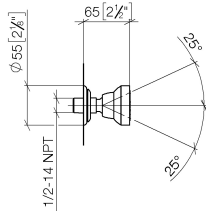
**Required miscellaneous**

**Concealed adapter -**

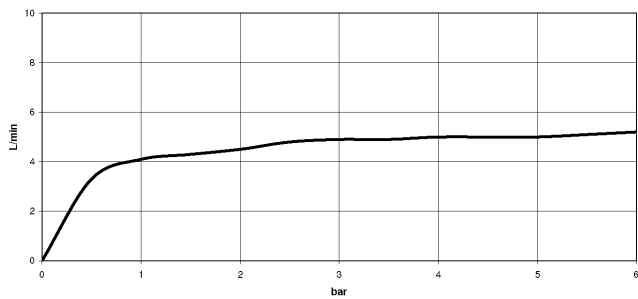
35 080 970-90  
0010



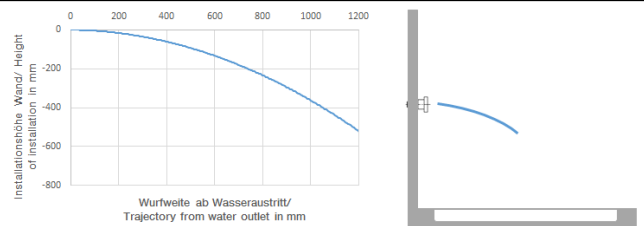
28 518 360  
mm [inches]



Flow rate chart



Trajectory diagram



Codes & Standards

|                                 |  |
|---------------------------------|--|
| ASME<br>A112.18.1/CSA<br>B125.1 | California Energy<br>Commission<br>(CEC) |
|---------------------------------|--|



MADISON Body spray without volume control FlowReduce - Durabrass (23kt Gold)

MADISON

---

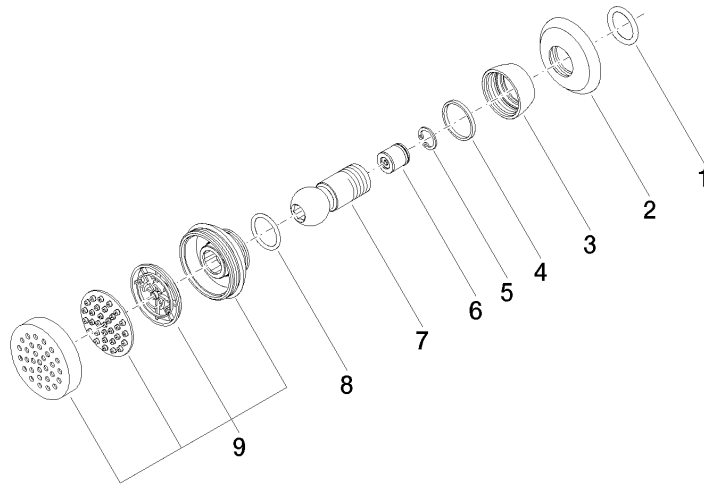
28 518 360

Certificates

---

LGA\_38651.

28 518 360



**Spare parts list**

| No. | Item Number        | Name                  | Quantity used | Delivery time |
|-----|--------------------|-----------------------|---------------|---------------|
| 1   | 90 14 10 026 00 90 | seal                  | 1             | 2             |
| 2   | 09 27 35 003-09    | rosette               | 1             | 40            |
| 3   | 09 23 30 027-09    | nut                   | 1             | 60            |
| 4   | 09 14 15 010 90    | ring                  | 1             | 2             |
| 5   | 09 16 01 014 90    | ring                  | 1             | 2             |
| 6   | 09 23 01 048 90    | back-flow preventer   | 1             | 2             |
| 7   | 09 21 40 016-09    | connection            | 1             | 40            |
| 8   | 09 14 10 015 90    | seal                  | 1             | 2             |
| 9   | 90 12 05 028 00-09 | casing ( completely ) | 1             | 40            |