


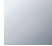

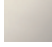


**MADISON Body spray without volume control FlowReduce - Brushed
Durabronz (23kt Gold)**

MADISON

28 518 360



- spray head Ø 55mm
- ball-joint pivotable through 25° (in any direction)
- rain flow
- rosette Ø 55 mm
- 1/2" connection
- max. flow 5 l/min
- This product can help a building meet the requirements of Green Building Rating Systems, e.g. LEED®, BREEAM®, DGNB

	Brushed Durabronz (23kt Gold)	28 518 360-28
	Chrome	28 518 360-00
	Brushed Platinum	28 518 360-06
	Platinum	28 518 360-08
	Durabronz (23kt Gold)	28 518 360-09
	Brushed Dark Platinum	28 518 360-99

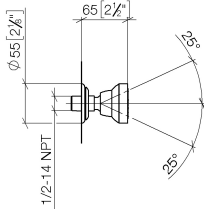
Required miscellaneous

Concealed adapter -

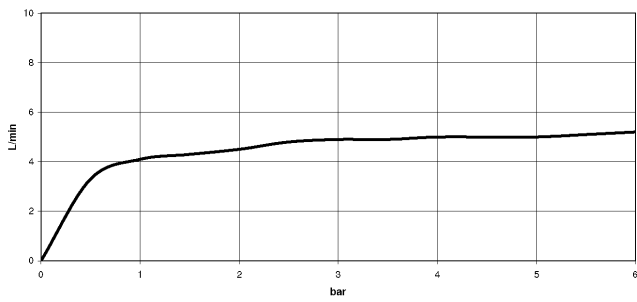
35 080 970-90
0010



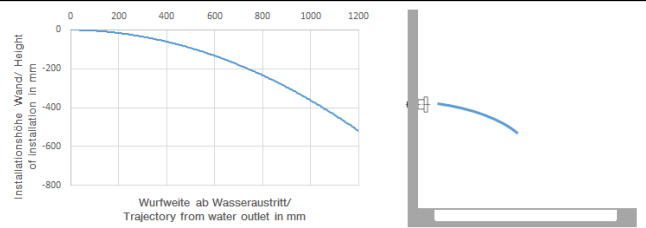
28 518 360
mm [inches]



Flow rate chart



Trajectory diagram



Codes & Standards

ASME
A112.18.1/CSA
B125.1

California Energy
Commission
(CEC)



MADISON Body spray without volume control FlowReduce - Brushed
Durabross (23kt Gold)

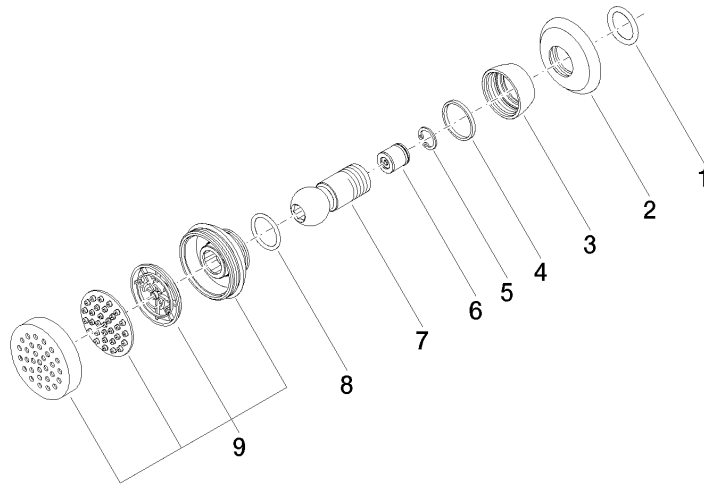
MADISON

28 518 360

Certificates

LGA_38651.

28 518 360



Spare parts list

No.	Item Number	Name	Quantity used	Delivery time
1	90 14 10 026 00 90	seal	1	2
2	09 27 35 003-28	rosette	1	60
3	09 23 30 027-28	nut	1	20
4	09 14 15 010 90	ring	1	2
5	09 16 01 014 90	ring	1	2
6	09 23 01 048 90	back-flow preventer	1	2
7	09 21 40 016-28	connection	1	20
8	09 14 10 015 90	seal	1	2
9	90 12 05 028 00-28	casing (completely)	1	20