

**Body spray without volume control FlowReduce - Brushed Light Gold**

IMO

28 518 782



Fits: IMO, MEM, CL.1, CYO

- spray head Ø 55mm
- ball-joint pivotable through 25° (in any direction)
- rain flow
- anti-scale system
- rosette 60 x 60 mm
- 1/2" connection
- max. flow 5 l/min
- WRAS 1809018
- This product can help a building meet the requirements of Green Building Rating Systems, e.g. LEED®, BREEAM®, DGNB

	Brushed Light Gold	28 518 782-27
	Chrome	28 518 782-00
	Brushed Platinum	28 518 782-06
	Platinum	28 518 782-08
	Dark Chrome	28 518 782-19
	Brushed Durabress (23kt Gold)	28 518 782-28
	Matte Black	28 518 782-33
	Brushed Champagne (22kt Gold)	28 518 782-46
	Champagne (22kt Gold)	28 518 782-47
	Brushed Chrome	28 518 782-93
	Brushed Dark Platinum	28 518 782-99

**Required miscellaneous**

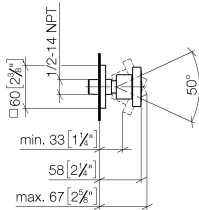
**Concealed adapter -**

35 080 970-90  
0010

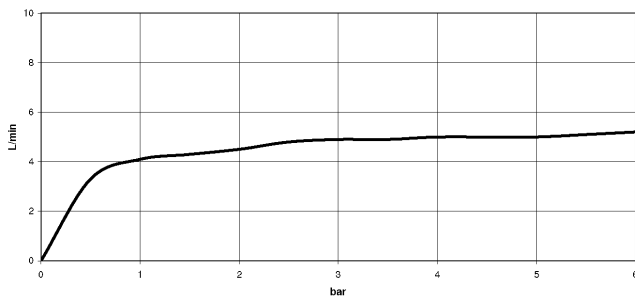


28 518 782

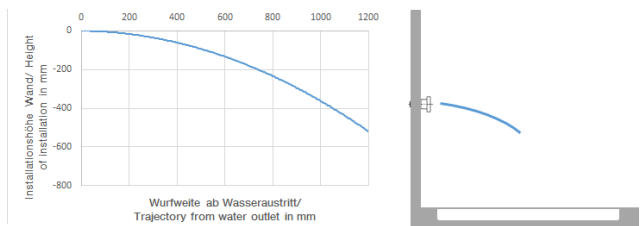
mm [inches]



Flow rate chart



Trajectory diagram



Codes & Standards

ASME  
A112.18.1/CSA  
B125.1

Scottish Water  
Byelaws

California Energy  
Commission  
(CEC)

UK Water Supply  
Regulations

DIN 4109

Ü-Zeichen

ISO 3822



Body spray without volume control FlowReduce - Brushed Light Gold

---

IMO

28 518 782

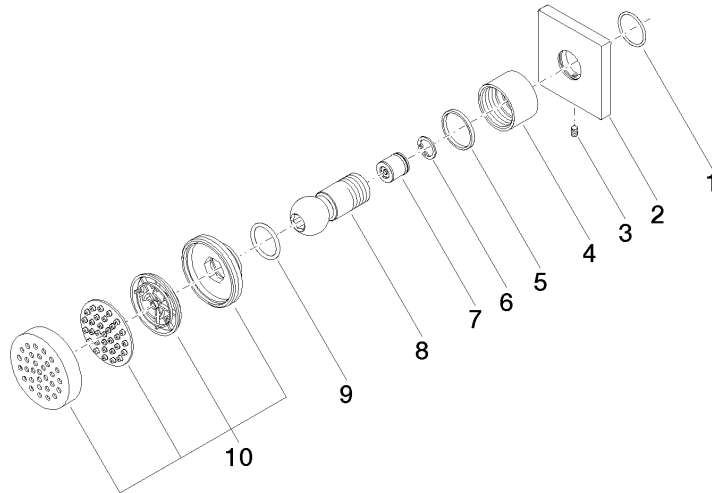
Certificates

---

LGA\_38

WRAS\_240602

28 518 782





## Spare parts list