

**Body spray without volume control FlowReduce - Brushed Durabronz (23kt Gold)**

IMO

28 518 782



- spray head Ø 55mm
- ball-joint pivotable through 25° (in any direction)
- rain flow
- anti-scale system
- rosette 60 x 60 mm
- 1/2" connection
- max. flow 5 l/min
- WRAS 1809018
- This product can help a building meet the requirements of Green Building Rating Systems, e.g. LEED®, BREEAM®, DGNB

Fits: IMO, MEM, CL.1, CYO

	Brushed Durabronz (23kt Gold)	28 518 782-28
	Chrome	28 518 782-00
	Brushed Platinum	28 518 782-06
	Platinum	28 518 782-08
	Dark Chrome	28 518 782-19
	Brushed Light Gold	28 518 782-27
	Matte Black	28 518 782-33
	Brushed Champagne (22kt Gold)	28 518 782-46
	Champagne (22kt Gold)	28 518 782-47
	Brushed Chrome	28 518 782-93
	Brushed Dark Platinum	28 518 782-99

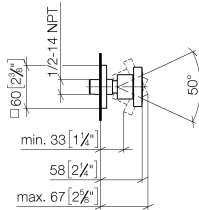
**Required miscellaneous**

**Concealed adapter -**

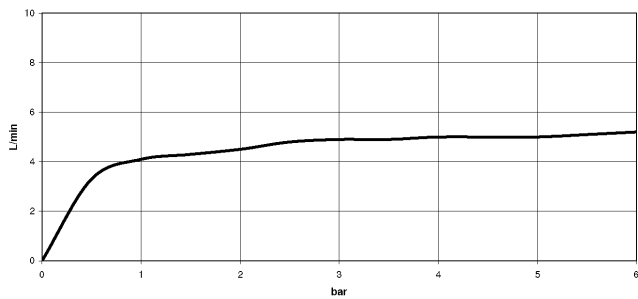
35 080 970-90  
0010



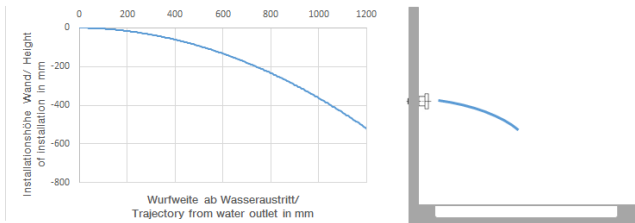
28 518 782  
mm [inches]



Flow rate chart



Trajectory diagram



Codes & Standards

ASME  
A112.18.1/CSA  
B125.1

California Energy  
Commission  
(CEC)



Body spray without volume control FlowReduce - Brushed Durabronz (23kt Gold)

IMO

---

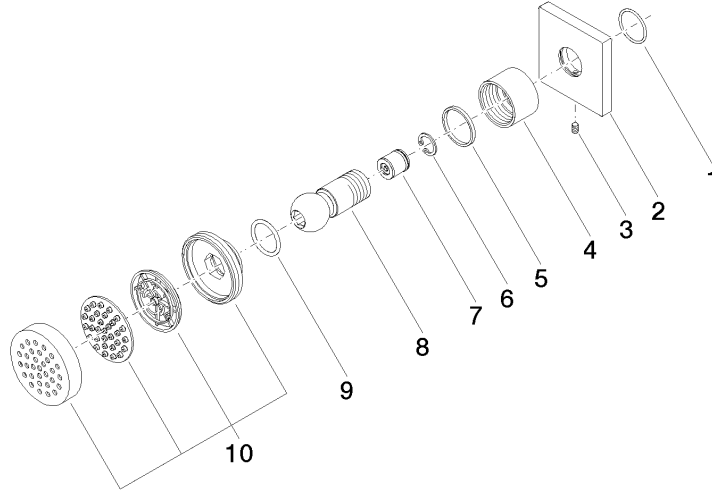
28 518 782

Certificates

---

WRAS\_1809018. LGA\_38651.

28 518 782



### Spare parts list

No.	Item Number	Name	Quantity used	Delivery time
1	09 14 10 098 90	seal	1	2
2	09 27 98 003-28	rosette	1	20
3	09 31 11 048 90	pin	1	2
4	09 23 30 026-28	nut	1	20
5	09 14 15 010 90	ring	1	2
6	09 16 01 014 90	ring	1	2
7	09 23 01 048 90	back-flow preventer	1	2
8	09 21 40 016-28	connection	1	20
9	09 14 10 015 90	seal	1	2
10	90 12 05 027 00-28	casing ( completely )	1	20